



RUNWAY DATA			
RUNWAY DATA	RUNWAY 6/24		ULTIMATE
	EXISTING	ULTIMATE	
EFFECTIVE GRADIENT (%)	0.81%	0.90%	
MAXIMUM GRADE CHANGE	0.026	SAME	
WIND COVERAGE (%)	99.33%	SAME	
MAX. ELEVATION (MSL)	1592.50	1600.45	
RUNWAY LENGTH	5005'	SAME	
RUNWAY WIDTH	75'	75'	
DISPLACED THRESHOLD	97'	429'	NONE
USABLE RUNWAY LENGTH	5005'	SAME	
SURFACE TYPE	ASPHALT	SAME	
PAVEMENT STRENGTH			
SINGLE WHEEL	16.500	24.000	
DUAL WHEEL	21.000	36.000	
CRITICAL AIRCRAFT	CESSNA SOVEREIGN	SAME	
APPROACH REFERENCE CODE (APRC)	B/11/5000	B/11/VIS	B/11/4000
DEPARTURE REFERENCE CODE (DPRC)	B/11	B/11	SAME
APPROACH SURFACE SLOPE	34:1	20:1	SAME
APPROACH VISIBILITY MINIMUMS	> 1 MILE	VIS	> 3/4 MILE
VISUAL APPROACH AIDS	REIL & VASI	NONE	REIL & PAPI
INSTRUMENT APPROACH AIDS	GPS	NONE	SAME
RUNWAY LIGHTING	LIRL	NONE	MIRL
RUNWAY MARKING	NP1		SAME

RUNWAY DATA (CONTINUED)			
RUNWAY DATA	EXISTING		ULTIMATE
	EXISTING	ULTIMATE	
RUNWAY OBJECT FREE AREA (ROFA)			
LENGTH BEYOND RUNWAY	300'	300'	SAME
WIDTH	500'	500'	SAME
RUNWAY SAFETY AREA (RSA)			
LENGTH BEYOND RUNWAY	300'	300'	SAME
WIDTH	150'	150'	SAME
FAR PART 77 CATEGORY	NON PRECISION	VISUAL	SAME
RUNWAY END COORDINATES (NAD 83)			
LATITUDE	N 36°22'04.37"	N 36°22'31.38"	SAME
LONGITUDE	W 82°10'47.63"	W 82°09'52.91"	SAME
RUNWAY END ELEVATIONS (MSL)	1555.80'	1600.45'	SAME
DISPLACED THRESHOLD COORDINATES (NAD 83)			
LATITUDE	N 36°22'04.88"	N 36°22'26.07"	SAME
LONGITUDE	W 82°10'46.63"	W 82°10'05.30"	SAME
DISPLACED THRESHOLD ELEVATION (MSL)	1555.80'	1585.30'	SAME
TDZ ELEVATION (MSL)	1574.51'	1585.30'	SAME

NOTE: RUNWAY 6 END LANDING THRESHOLD IS LOW POINT (1555.80) AND RUNWAY GRADIENT INCREASES TO TDZ ELEVATION 3000 FEET FROM THRESHOLD.

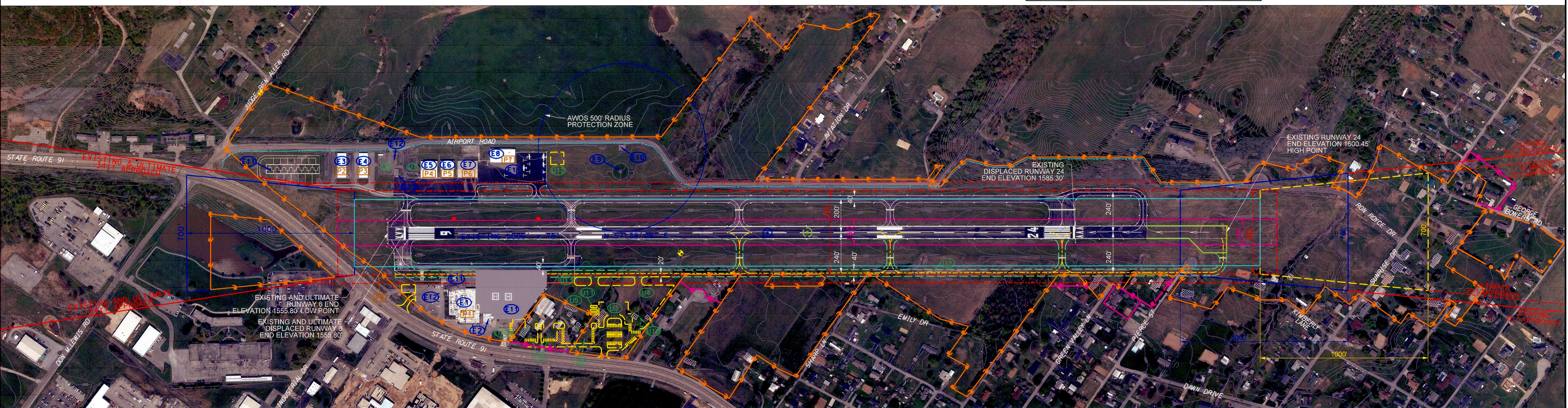
AIRPORT DATA		
AIRPORT DATA	EXISTING	ULTIMATE
NPIAS SERVICE LEVEL	GA	SAME
BEACON	NONE	YES
WIND SOCK	YES	SAME
SEGMENTED CIRCLE	YES	SAME
AIRPORT ELEVATION (MSL)	1592.50'	1600.45'
AIRPORT REFERENCE POINT (NAD 83)		
LATITUDE*	N 36°22'16.87"	N 36°22'18.14"
LONGITUDE*	W 82°10'21.20"	W 82°10'18.74"
MEAN MAX TEMPERATURE OF HOTTEST MONTH (JULY)	87.7°	87.7°
AIRPORT TERMINAL AREA NAVAIDS	NA	NA
AIRPORT DESIGN GROUP (ADG)	B-11	B-11
TAXIWAY DESIGN GROUP (TDG)	2	2
TAXIWAY LIGHTING	MITL	SAME



R/W PROTECTION ZONE DIMENSIONS		
RUNWAY END	EXISTING	ULTIMATE
6	1000' L X 500' IW X 700' OW	SAME
24	1000' L X 500' IW X 700' OW	SAME

TAXIWAY DATA		
TAXIWAY DATA	EXISTING	ULTIMATE
TAXIWAY WIDTH	40'	40'
TAXIWAY SAFETY AREA (TSA)	79'	79'
TAXIWAY OBJECT FREE AREA (TOFA)	131'	131'
TAXIWAY EDGE SAFETY MARGIN	7.5'	7.5'
TAXIWAY SHOULDER WIDTH	15'	15'

NOTE: AFTER THE NEW PARALLEL TAXIWAY ON THE SOUTH SIDE OF THE RUNWAY IS IN OPERATION, THE PARALLEL TAXIWAY ON THE NORTH SIDE OF THE RUNWAY SHOULD BE REMOVED OR RELOCATED TO A CENTERLINE SEPARATION OF 240 FEET.



DECLARED DISTANCES								
RUNWAY END ID	TORA	TODA	ASDA	LDA	ASDA			DATE OF APPROVAL
					APPROACH END RSA LENGTH	STOP END RSA LENGTH	RSA LENGTH	
EXISTING								
6	5005	5005	5005	4908	300	300	300	
24	5005	5005	5005	4100	300	300	300	

TRAVERSE WAY						
NO.	ROADWAY SURFACE ELEVATION (feet)	APPROACH SURFACE ELEVATION		AMOUNT OF CLEARANCE		PROPOSED ACTION
		EXISTING	ULTIMATE	EXISTING	ULTIMATE	
C1	1533.8	1602.3	SAME	68.5	SAME	NONE
C2	1539.8	1591.8	SAME	52.0	SAME	NONE
C3	1558.0	1583.0	SAME	25.0	SAME	NONE
C4	1549.6	1565.2	SAME	15.6	SAME	NONE
C5	1544.5	1556.7	SAME	12.2	SAME	APPLY TSS
C6	1603.8	1606.8	1604.2	3.0	N/A	LIGHT
C7	1612.5	1621.3	1605.5	8.8	-7.0	MARK & LIGHT
C8	1622.0	1654.4	1638.6	32.4	16.6	NONE
C9	1614.8	1648.5	1632.6	33.7	17.8	NONE
C10	1620.0	1660.1	1644.2	40.1	24.2	NONE
C11	1652.1	1673.6	1657.8	21.5	5.7	LIGHT
C12	1621.9	1702.1	1686.2	80.2	64.3	NONE
C13	1602.1	1694.6	1678.8	92.5	76.7	NONE

NOTE: C7 ULTIMATE DISPOSITION OF THIS TRAVERSE WAY VIOLATION MAY RESULT IN APPROPRIATE LIGHTING OF THE TRAVERSE WAY AND/OR MARKING OF THE RUNWAY.

MODIFICATION TO STANDARDS APPROVAL					
NO.	STANDARD MODIFIED	FAA STANDARDS	EXISTING CONDITION	PROPOSED ACTION	DATE
NA	NA	NA	NA	NA	NA

**CONDITIONALLY APPROVED**  
Date: Paul Saalwachter 8-21-18  
Signature: John Paul Saalwachter  
Title: State Block Grant Program  
Tennessee Dept. of Transportation  
Subject to comments in Approval Letter

ON-AIRPORT PENETRATIONS TO FAR PART 77 SURFACES					
EXISTING PART 77	ULTIMATE PART 77	DESCRIPTION	ELEVATION	VIOLATION	ULTIMATE DISPOSITION
P1	SAME	E1 TERMINAL/HANGAR	1578.8	10.3'	LIGHT
P2	SAME	E3 T-HANGAR	1575.5	7.8'	LIGHT
P3	SAME	E4 T-HANGAR	1575.6	7.9'	LIGHT
P4	SAME	E5 HANGAR	1588.1	20.4'	LIGHT
P5	SAME	E6 HANGAR	1588.1	20.0'	LIGHT
P6	SAME	E7 HANGAR	1587.2	18.4'	LIGHT
P7	SAME	E8 HANGAR	1601.7	26.6'	LIGHT
P8	SAME	GUY-WIRE POLE	1582.1	26.3'	REMOVE

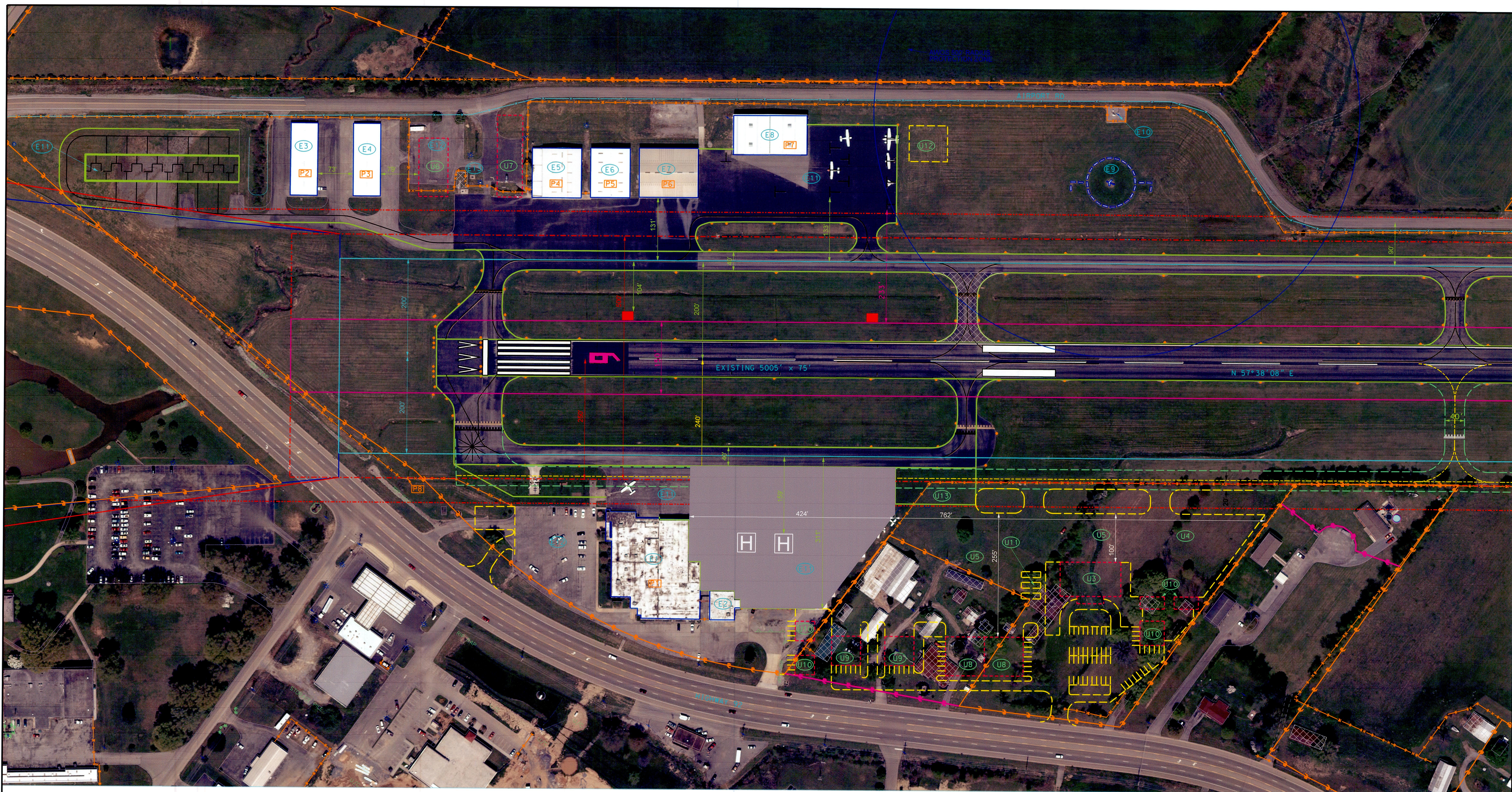
NOTE: SEE SHEET NO. 6 FOR PART 77 VIOLATIONS OFF-AIRPORT.

EXISTING		
NO.	FEATURE	ELEV.
E1	TERMINAL BUILDING & HANGAR	1578.8
E2	SHOP	1576.6
E3	T-HANGARS	1575.5
E4	T-HANGARS	1575.6
E5	AIRCRAFT HANGAR	1588.1
E6	AIRCRAFT HANGAR	1589.6
E7	AIRCRAFT HANGAR	1587.2
E8	AIRCRAFT HANGAR	1601.7
E9	SEGMENTED CIRCLE & LIGHTED WIND CONE	1571.7
E10	AWOS	1600.2
E11	AIRCRAFT PARKING	
E12	AUTOMOBILE PARKING	
E13	FUEL FARM (USTs) TO BE REMOVED	

ULTIMATE		
NO.	FEATURE	
U1	OMIT	
U2	PARALLEL TAXIWAY	
U3	TERMINAL BUILDING	
U4	BASED AIRCRAFT TIEDOWNS	
U5	TRANSIENT PARKING	
U6	4 UNIT LARGE NESTED T-HANGAR	
U7	3 UNIT LARGE BOX HANGAR	
U8	80'X80' FBO	
U9	60'X60' CORPORATE HANGAR	
U10	MAINTENANCE STORAGE	
U11	FUEL TRUCK PARKING	
U12	FUEL FARM (MAX HEIGHT LESS THAN 40 FT)	
U13	HELIPAD AREA	

NOTES: NO THRESHOLD SITING SURFACE OBJECT PENETRATIONS.  
NO OBSTACLE FREE ZONE PENETRATIONS.

LEGEND		
DESCRIPTION	EXISTING	ULTIMATE
GVS1 RUNWAY		NOT SHOWN
RUNWAY SAFETY AREA (RSA)		
RUNWAY OBJECT FREE AREA (ROFA)		



TERMINAL AREA DRAWING

ELIZABETHTON MUNICIPAL AIRPORT  
ELIZABETHTON, TENNESSEE  
AIRPORT LAYOUT PLAN UPDATE  
TAD 10-555-0729-04

Drawn By: MUC  
Checked By: AOT

Project No. NS-11405-000  
Issue Date SEPT 2017

No.	Revision	By	Date

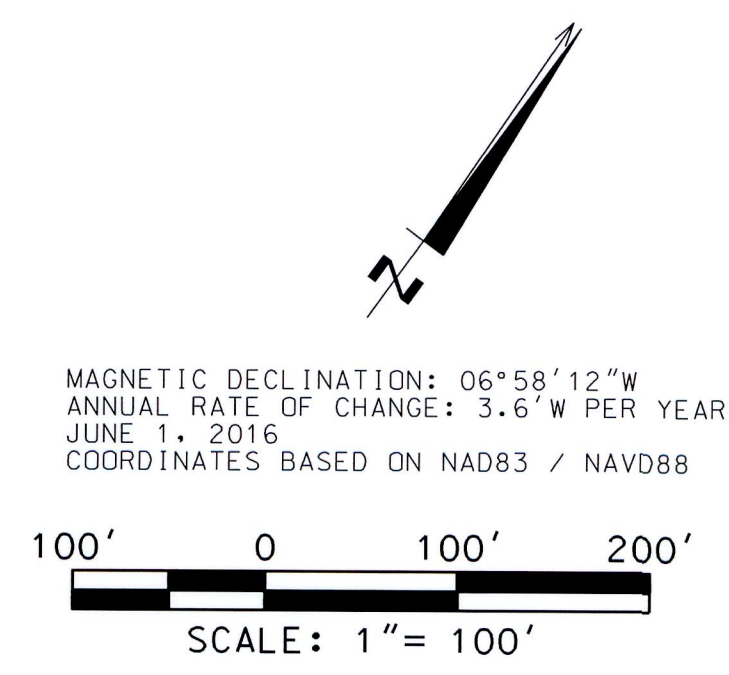
EXISTING			ULTIMATE		
NO.	FEATURE	ELEV.	NO.	FEATURE	
E1	TERMINAL BUILDING & HANGAR	1578.8	U1	RUNWAY EXTENSION	
E2	SHOP	1576.6	U2	PARALLEL TAXIWAY	
E3	T-HANGARS	1575.5	U3	TERMINAL BUILDING	
E4	T-HANGARS	1575.6	U4	BASED AIRCRAFT TIEDOWNS	
E5	AIRCRAFT HANGAR	1588.1	U5	TRANSIENT PARKING	
E6	AIRCRAFT HANGAR	1589.6	U6	4 UNIT LARGE NESTED T-HANGAR	
E7	AIRCRAFT HANGAR	1587.2	U7	3 UNIT LARGE BOX HANGAR	
E8	AIRCRAFT HANGAR	1601.7	U8	80' X80' FBO	
E9	SEGMENTED CIRCLE & LIGHTED WIND CONE	1571.7	U9	60' X60' CORPORATE HANGAR	
E10	AWOS	1600.2	U10	MAINTENANCE STORAGE	
E11	AIRCRAFT PARKING		U11	FUEL TRUCK PARKING	
E12	AUTOMOBILE PARKING		U12	FUEL FARM	
E13	FUEL FARM (USTs) TO BE REMOVED		U13	HELIPAD AREA	

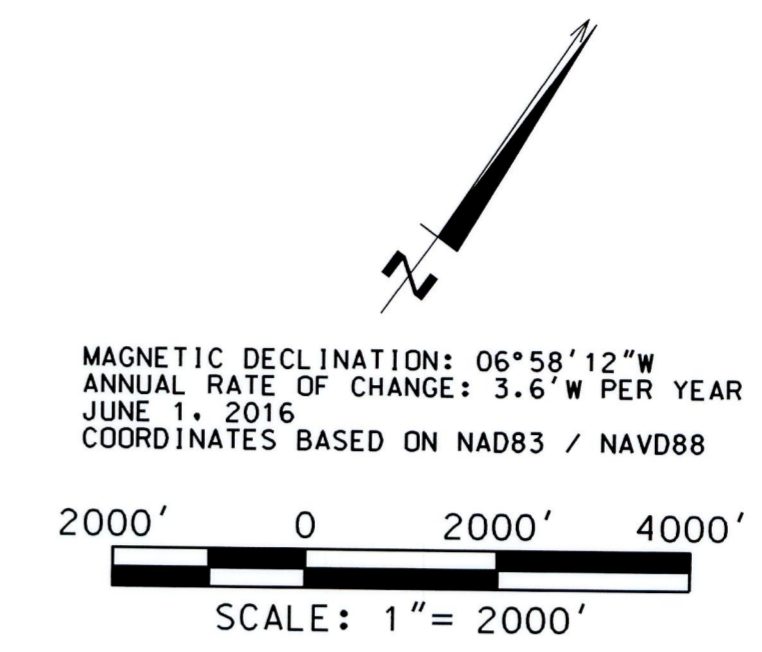
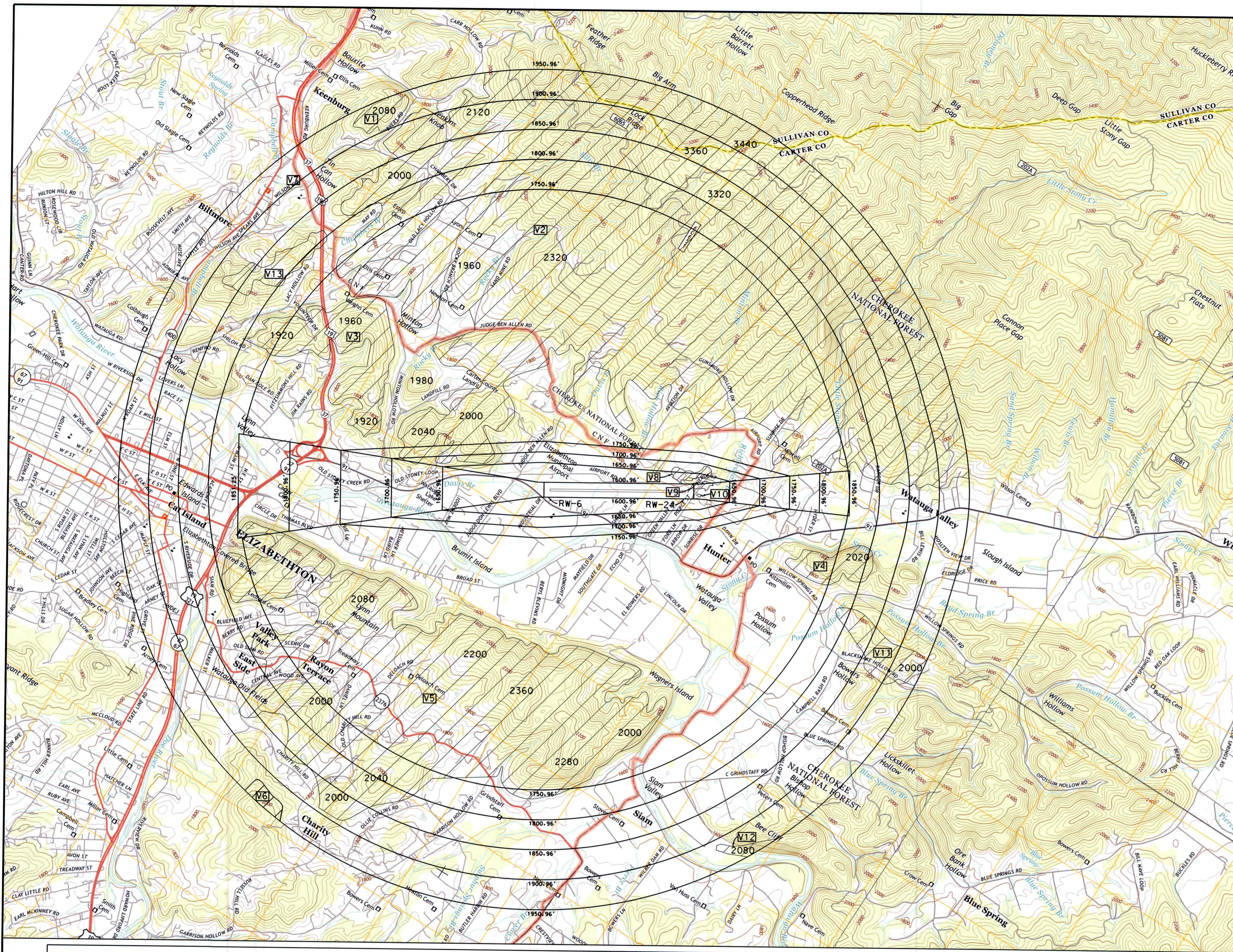
NOTES: NO THRESHOLD SITING SURFACE OBJECT PENETRATIONS.  
NO OBSTACLE FREE ZONE PENETRATIONS.

EXISTING PART 77	ULTIMATE PART 77	DESCRIPTION	ELEVATION	VIOLATION	ULTIMATE DISPOSITION
P1	SAME	E1 TERMINAL/HANGAR	1578.8	10.3'	LIGHT
P2	SAME	E3 T-HANGAR	1575.5	7.8'	LIGHT
P3	SAME	E4 T-HANGAR	1575.6	7.9'	LIGHT
P4	SAME	E5 HANGAR	1588.1	20.4'	LIGHT
P5	SAME	E6 HANGAR	1588.1	20.0'	LIGHT
P6	SAME	E7 HANGAR	1587.2	18.4'	LIGHT
P7	SAME	E8 HANGAR	1601.7	26.6'	LIGHT
P8	SAME	GUY-WIRE POLE	1582.1	26.3'	REMOVE

NOTE: SEE SHEETS NO. 6 AND 7 FOR PART 77 VIOLATIONS OFF-AIRPORT.

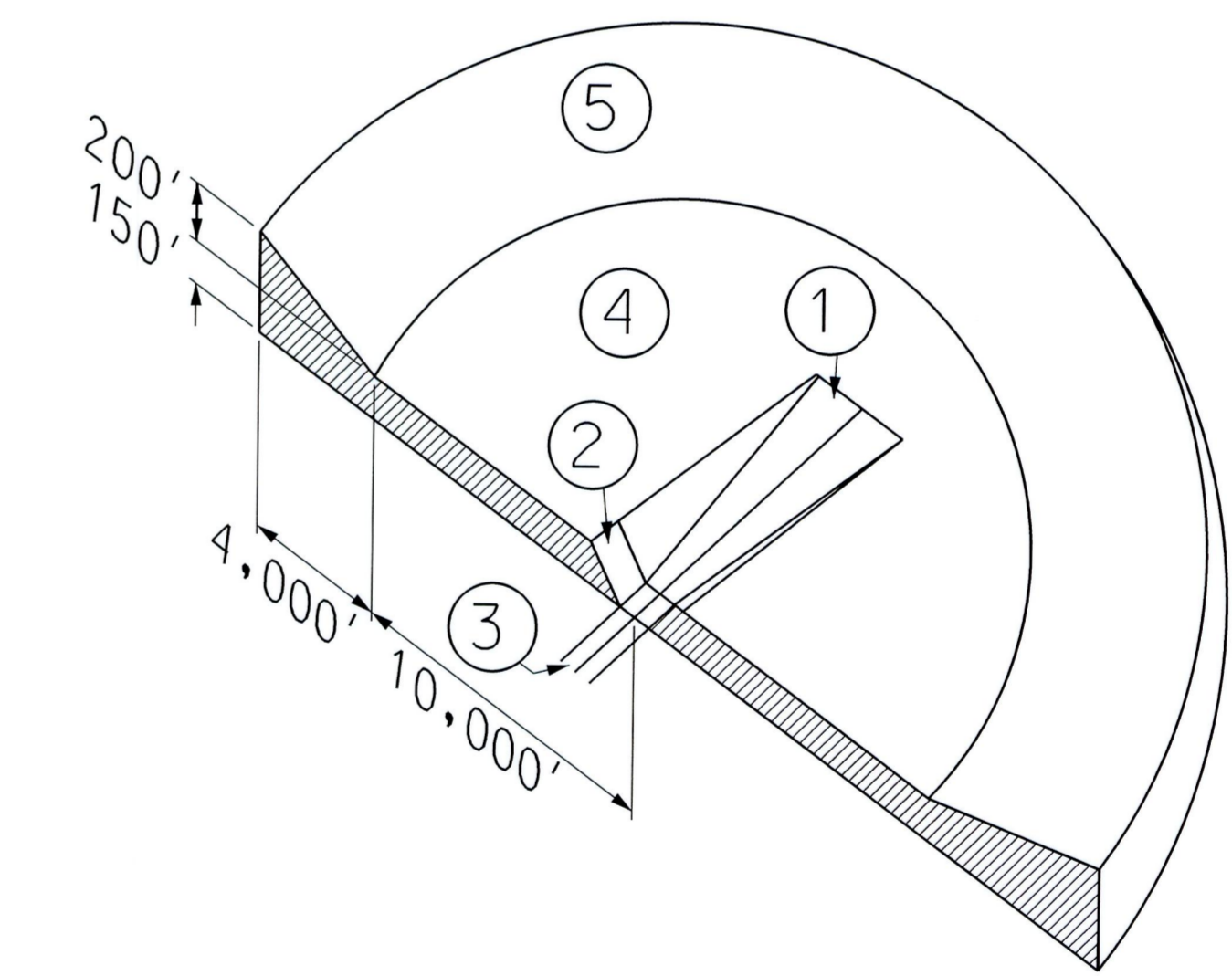
DESCRIPTION	EXISTING	ULTIMATE
GVSJ		NOT SHOWN
RUNWAY		NOT SHOWN
RUNWAY SAFETY AREA (RSA)		NOT SHOWN
RUNWAY OBJECT FREE AREA (ROFA)		NOT SHOWN
RUNWAY OBSTACLE FREE ZONE (ROFZ)		NOT SHOWN
RUNWAY PROTECTION ZONE (RPZ)		NOT SHOWN
BUILDING RESTRICTION LINE (BRL)		NOT SHOWN
AIRCRAFT PAVEMENT		NOT SHOWN
AIRCRAFT REFERENCE POINT		NOT SHOWN
AIRCRAFT BUILDINGS		NOT SHOWN
OTHER BUILDINGS		NOT SHOWN
AIRCRAFT PROPERTY LINE / EASEMENTS		NOT SHOWN
AVIGATION EASEMENTS		NOT SHOWN
FENCE (6' MAX HEIGHT)		NOT SHOWN
ROADS		NOT SHOWN
TREE LINE		NOT SHOWN
WATER		NOT SHOWN
GROUND ELEVATION CONTOURS		NOT SHOWN
STRUCTURES/PAVEMENT TO BE REMOVED		NOT SHOWN
SURVEY MONUMENTS		NOT SHOWN





NOTE:  
SEE INNER PORTION OF THE APPROACH PLAN VIEW  
FOR CLOSE-IN OBSTRUCTIONS.

NOTE:  
AERIAL PHOTOGRAMMETRY OCCURRED APRIL 22, 2013.  
AN AGIS VERTICALLY GUIDED (VG) SURVEY HAS  
NOT BEEN CONDUCTED.



LEGEND

- ① APPROACH ZONE (34:1 SLOPE)
- ② TRANSITIONAL SURFACE (7:1 SLOPE)
- ③ PRIMARY SURFACE
- ④ HORIZONTAL SURFACE (150' ABOVE ESTABLISHED AIRPORT ELEVATION)
- ⑤ CONICAL SURFACE (20:1 SLOPE)

VIOLETIONS TO FAR PART 77 SURFACES

ULTIMATE PART 77	DESCRIPTION	ELEVATION	VIOLETION	ULTIMATE DISPOSITION
V1	TERRAIN	UP TO 2080	UP TO 155'	LIGHT
V2	TERRAIN	UP TO 3440	UP TO 1515'	LIGHT
V3	TERRAIN	UP TO 1960	UP TO 210'	LIGHT
V4	TERRAIN	UP TO 2020	UP TO 145'	LIGHT
V5	TERRAIN	UP TO 2360	UP TO 610'	LIGHT
V6	TERRAIN	UP TO 2000	UP TO 50'	LIGHT
V7	TOWERS	2075	165'	LIGHT
V8	TERRAIN	UP TO 1692	UP TO 25'	LIGHT
V9	TERRAIN	UP TO 1608	UP TO 7'	REMOVE/LIGHT
V10	TERRAIN	UP TO 1602	UP TO 2'	REMOVE
V11	TERRAIN	UP TO 2000	UP TO 225'	LIGHT
V12	TERRAIN	UP TO 2080	UP TO 160'	LIGHT
V13	TERRAIN	UP TO 2035	UP TO 235'	LIGHT

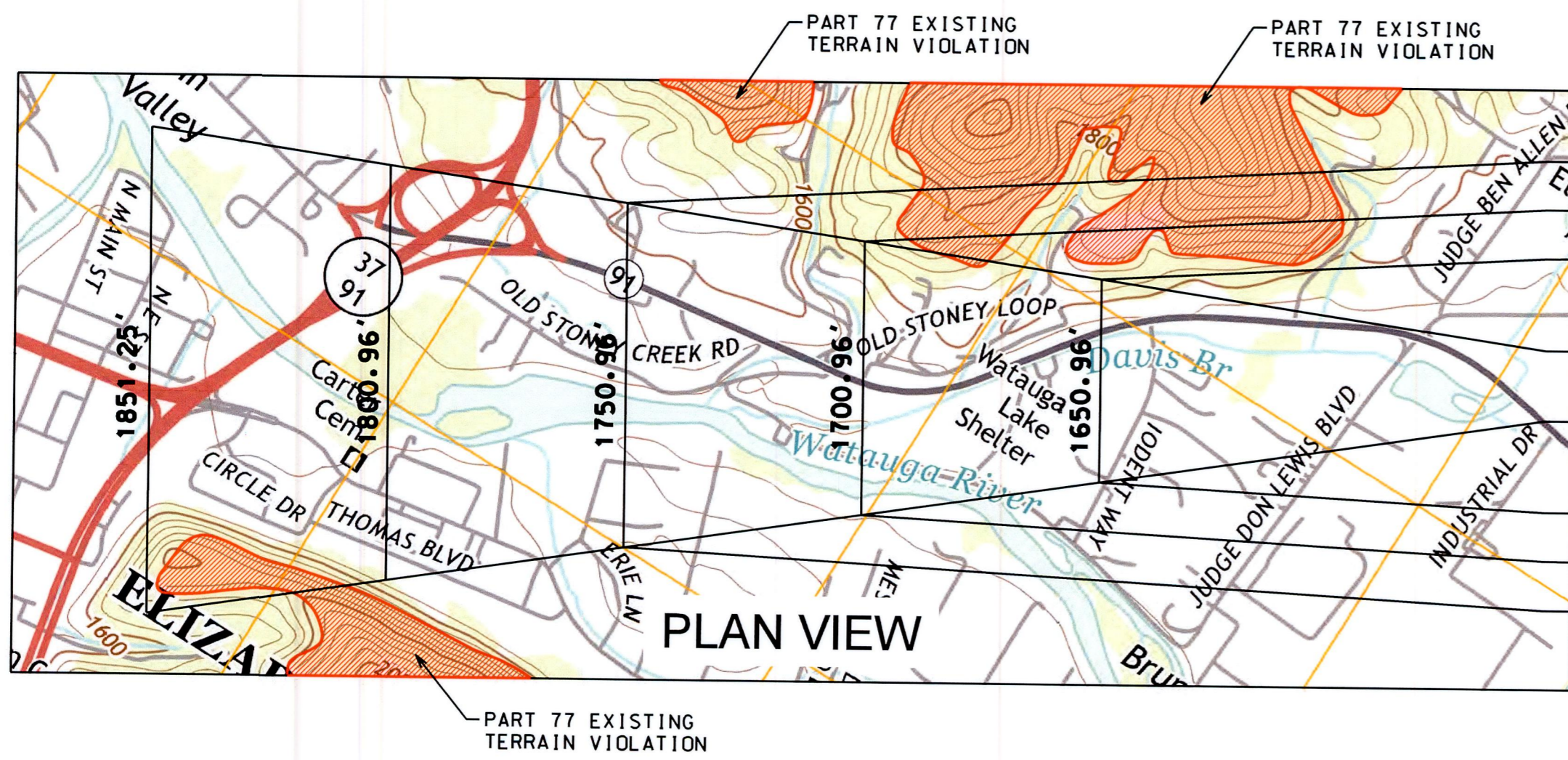
FAR PART 77 AIRSPACE DRAWING  
 ELIZABETHTON MUNICIPAL AIRPORT  
 ELIZABETHTON, TENNESSEE  
 AIRPORT LAYOUT PLAN UPDATE  
 TAD 10-555-0729-04

Project No. NS-11405-000	Drawn By: MUC	By	Date
Issue Date SEPT 2017	Checked By: AOT	Revision	
No.			

SHEET  
**4**

NOTE: SEE INNER PORTION OF THE APPROACH  
PLAN VIEW FOR CLOSE-IN OBSTRUCTIONS.

NOTE:  
AERIAL PHOTOGRAMMETRY OCCURRED APRIL 22, 2013. AN AGIS  
VERTICALLY GUIDED (VG) SURVEY HAS NOT BEEN CONDUCTED.



MAGNETIC DECLINATION: 06°58'12"W  
ANNUAL RATE OF CHANGE: 3.6"W PER YEAR  
JUNE 1, 2016  
COORDINATES BASED ON NAD83 / NAVD88

1000' 0 1000' 2000'

SCALE: 1" = 1000'

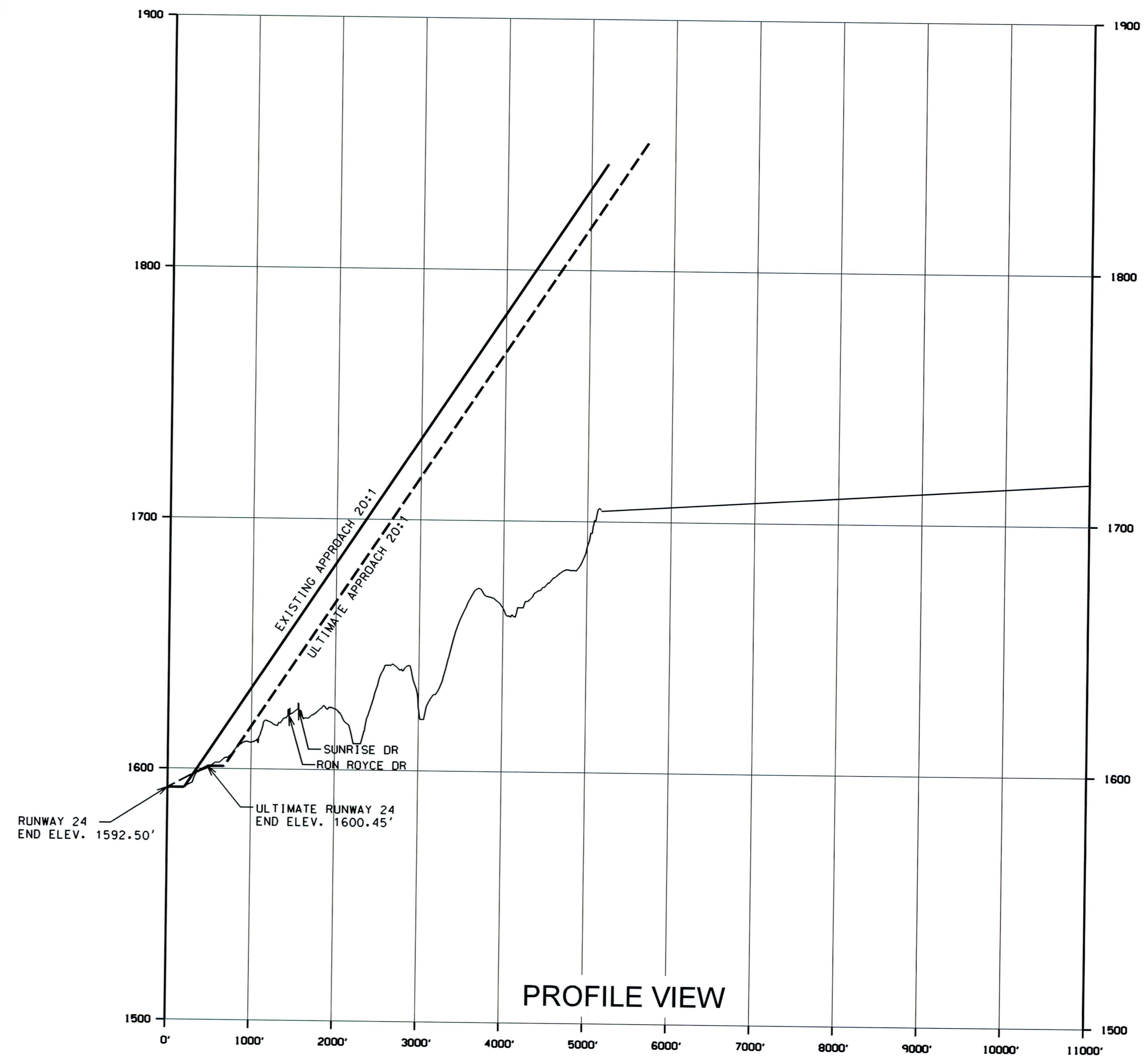
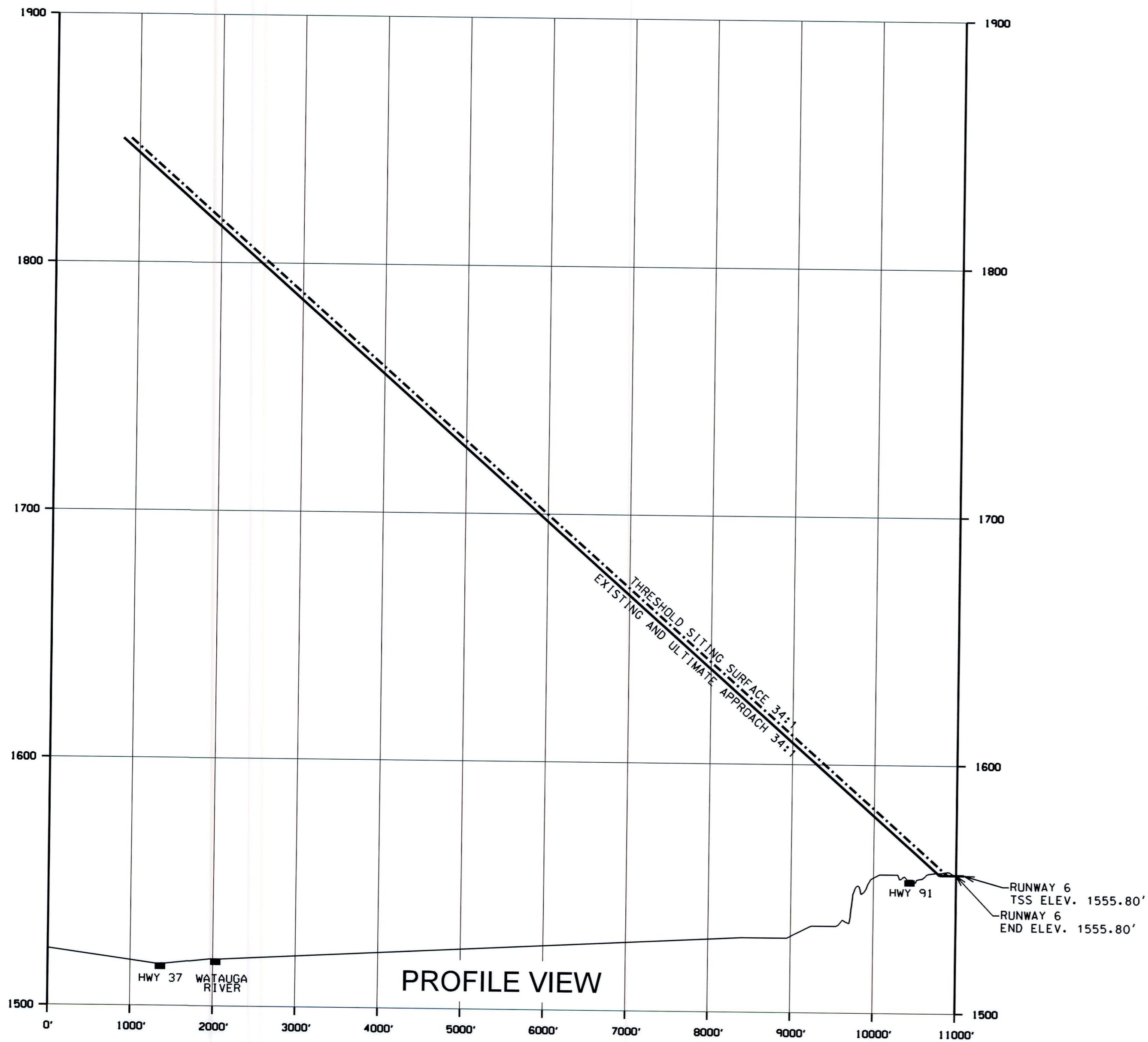
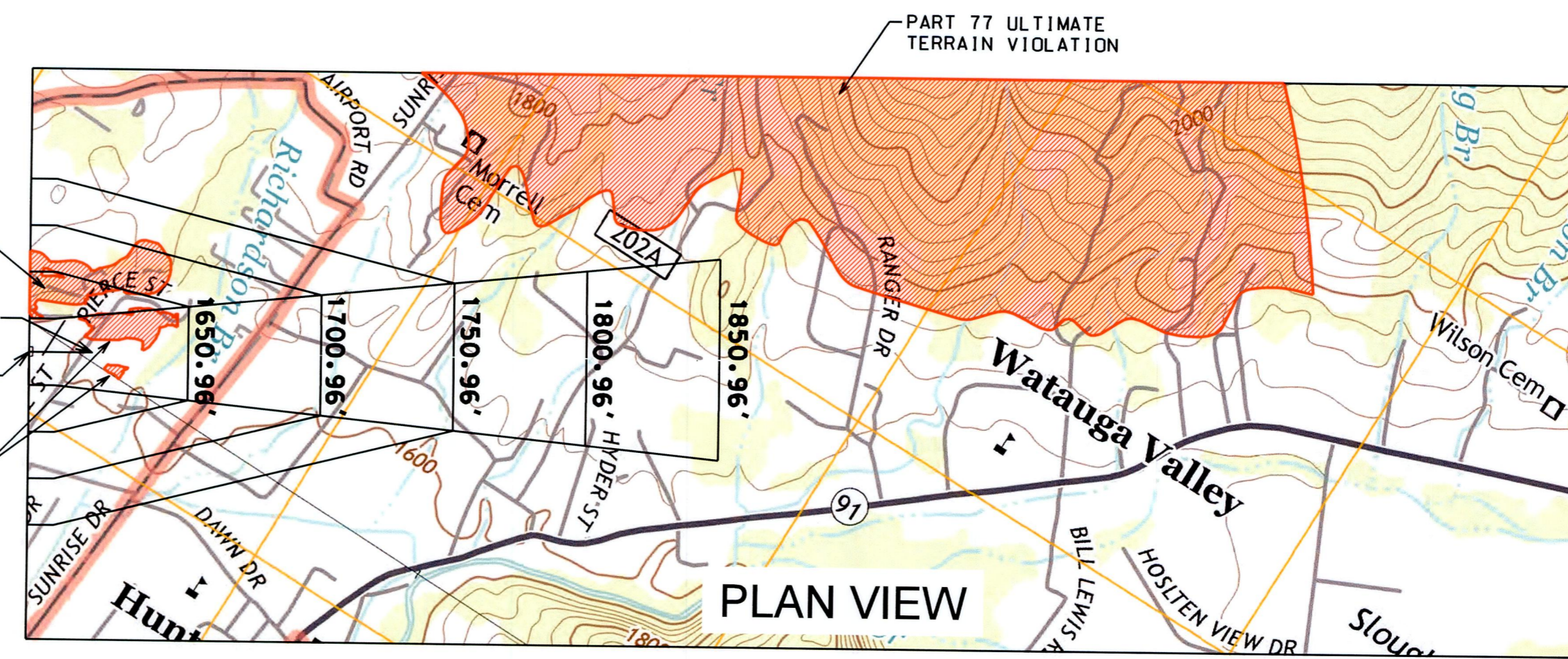


PART 77 ULTIMATE  
TERRAIN VIOLATION

ULTIMATE RUNWAY 24  
END ELEV. 1600.45'

RUNWAY 24  
END ELEV. 1592.50'

PART 77 ULTIMATE  
TERRAIN VIOLATION

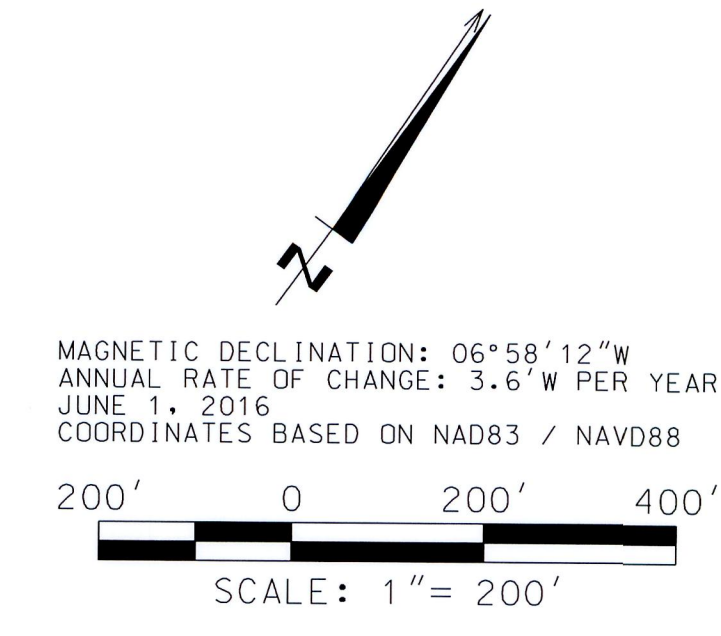
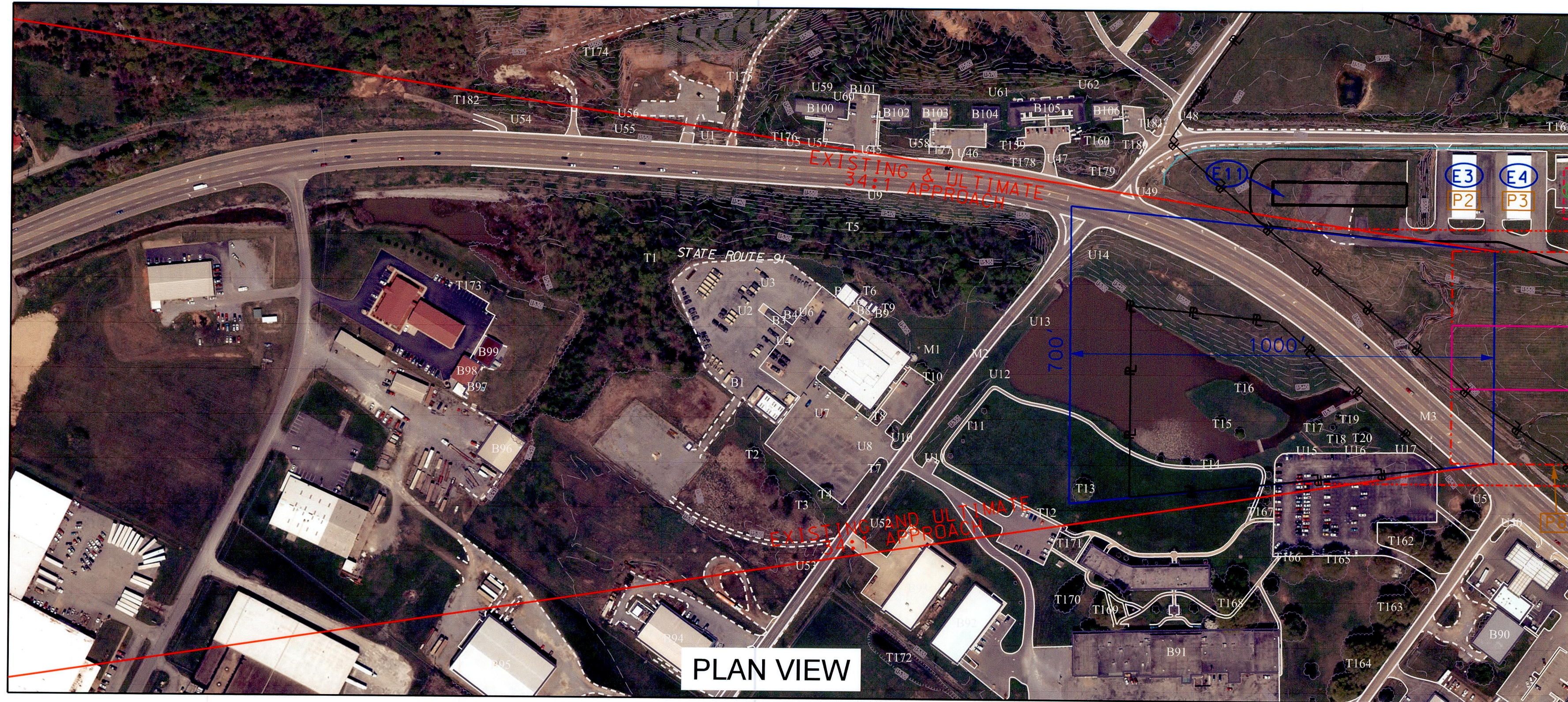


APPROACH SURFACE DRAWING

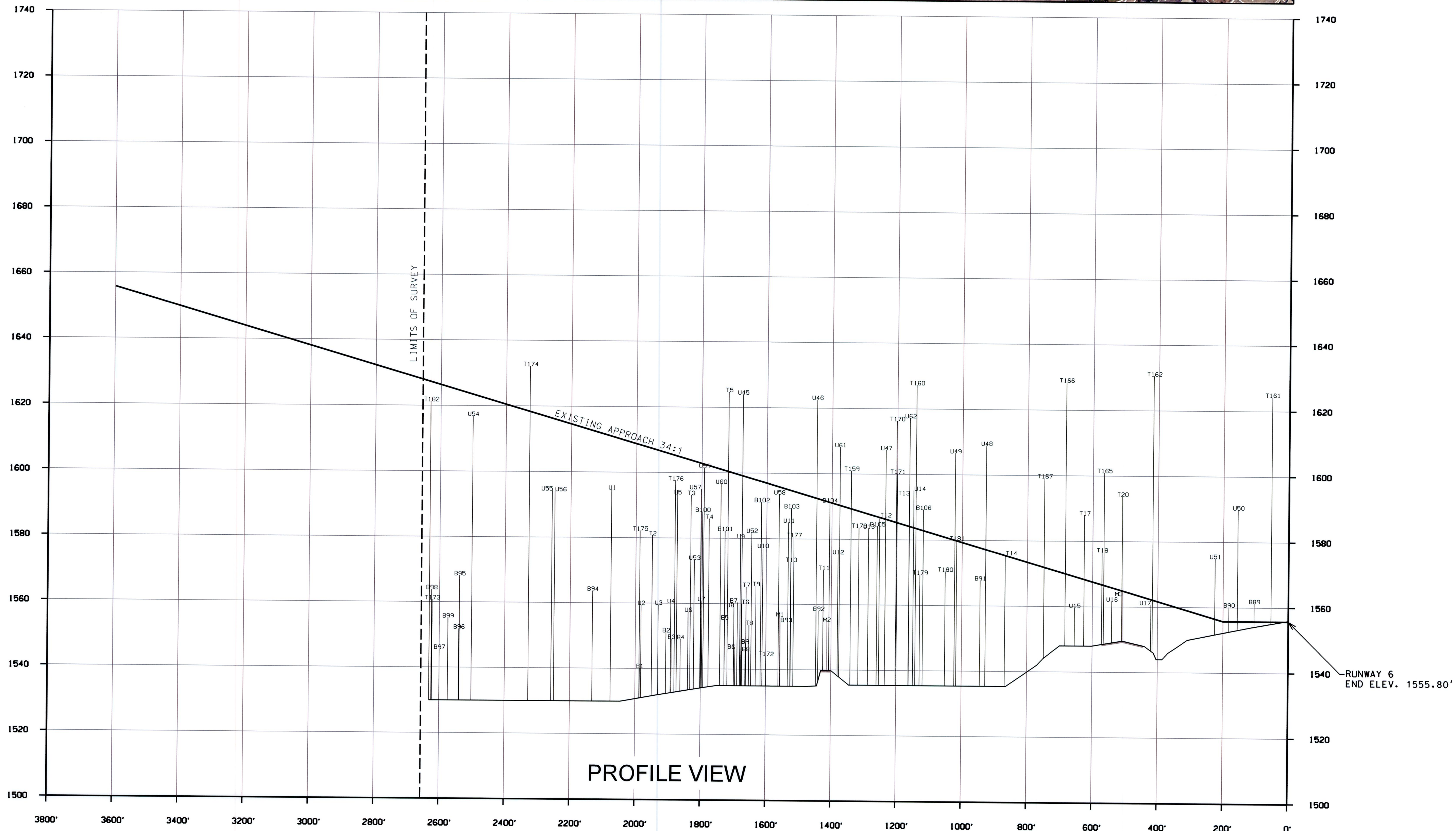
ELIZABETHTON MUNICIPAL AIRPORT  
ELIZABETHTON, TENNESSEE  
AIRPORT LAYOUT PLAN UPDATE  
TAD 10-555-0729-04

Project No. NS-11405-000	Drawn By: MUC	By	Date
Issue Date SEPT 2017	Checked By: AOT	Revision	
No.			

NOTE: OBSTRUCTION TABLES ARE LOCATED ON SHEET 8.



MAGNETIC DECLINATION: 06°58'12"W  
 ANNUAL RATE OF CHANGE: 3.6"W PER YEAR  
 JUNE 1, 2016  
 COORDINATES BASED ON NAD83 / NAVD88



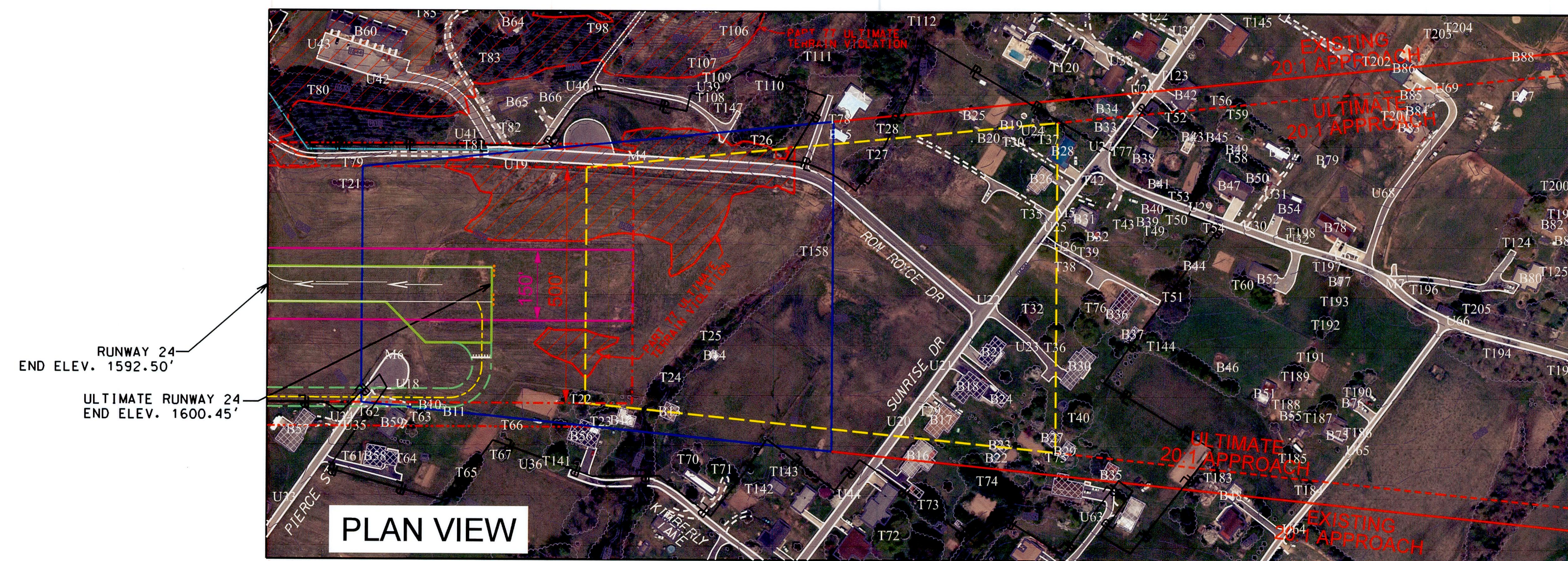
**RW 6 INNER PORTION OF APPROACH SURFACE**  
 ELIZABETHTON MUNICIPAL AIRPORT  
 ELIZABETHTON, TENNESSEE  
 AIRPORT LAYOUT PLAN UPDATE  
 TAD 10-555-0729-04

Project No. NS-11405-000	Drawn By: MUC	By	Date
Issue Date SEPT 2017	Checked By: AOT	Revision	
		No.	

**SHEET**  
**6**

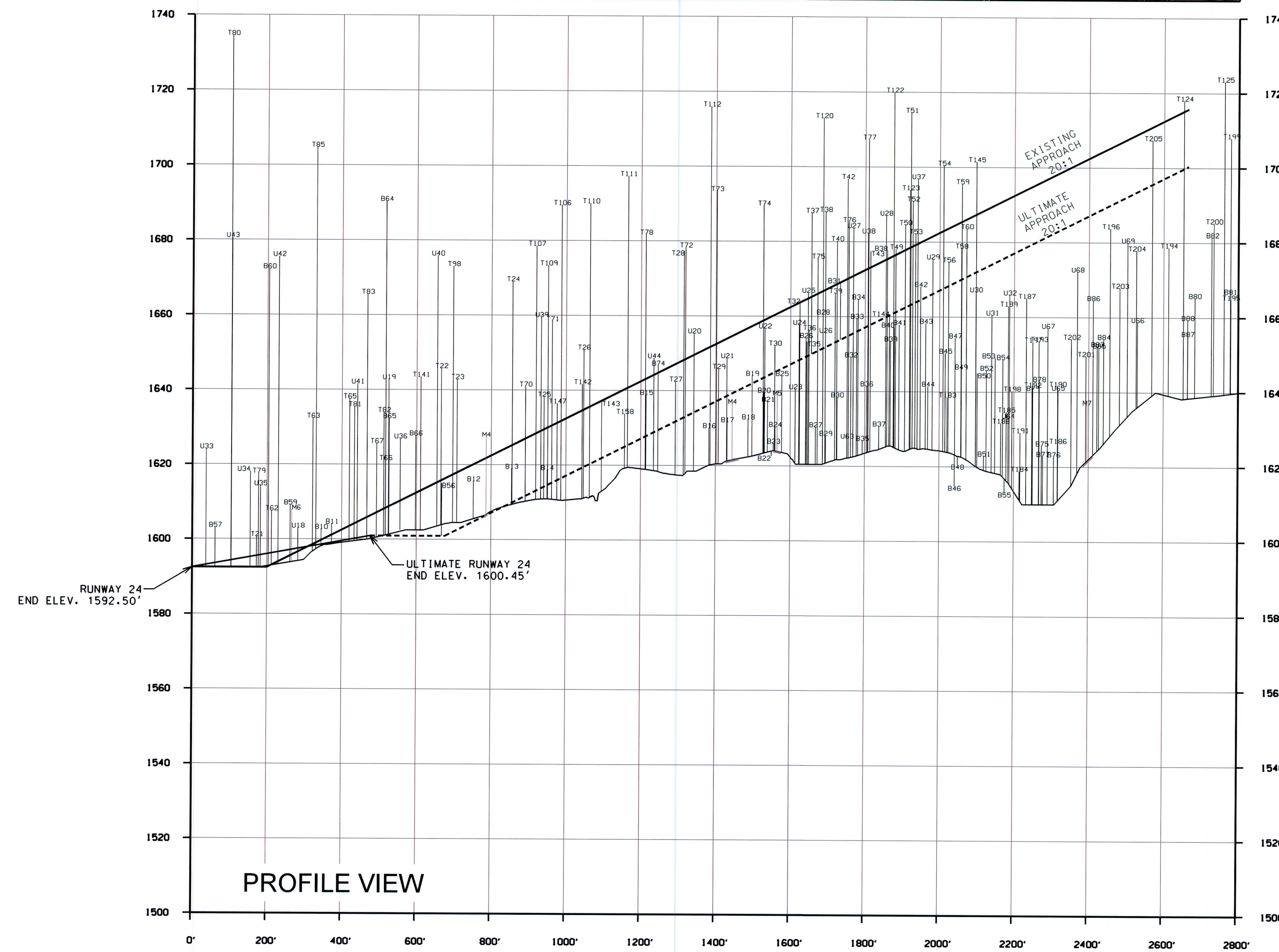
NOTE: OBSTRUCTION TABLES ARE LOCATED ON SHEET 8.

MAGNETIC DECLINATION: 06°58'12"W  
ANNUAL RATE OF CHANGE: 3.6"W PER YEAR  
JUNE 1, 2016  
COORDINATES BASED ON NAD83 / NAVD88  
SCALE: 1" = 200'



RUNWAY 24  
END ELEV. 1592.50'  
ULTIMATE RUNWAY 24  
END ELEV. 1600.45'

PLAN VIEW



PROFILE VIEW

RW 24 INNER PORTION OF APPROACH SURFACE  
ELIZABETHTON MUNICIPAL AIRPORT  
ELIZABETHTON, TENNESSEE  
AIRPORT LAYOUT PLAN UPDATE  
TAD 10-555-0729-04

Project No. NS.11405.000	Drawn By: MUC	By	Date
Issue Date SEPT 2017	Checked By: AOT	Revision	
No.			

NOTE:  
FOR AIR-PORT OBSTRUCTIONS  
SEE SHEET 2, AIRPORT LAYOUT  
DRAWING

RUNWAY 6 - 34:1 APPROACH				
NO.	DESCRIPTION	AGL FEET	TOP ELEV	PROPOSED ACTION
T1	TREE	78.1	1608.1	N/A
T2	TREE	50.8	1580.8	N/A
T3	TREE	63.2	1593.2	N/A
T4	TREE	55.0	1586.0	N/A
T5	TREE	90.1	1624.7	TRIM TREES
T6	TREE	27.3	1560.0	N/A
T7	TREE	30.7	1565.2	N/A
T8	TREE	18.6	1553.8	N/A
T9	TREE	31.2	1565.5	N/A
T10	TREE	38.0	1573.0	N/A
T11	TREE	35.6	1570.6	N/A
T12	TREE	51.8	1586.9	N/A
T13	TREE	59.2	1594.9	TRIM TREES
T14	TREE	39.9	1575.6	N/A
T15	TREE	36.1	1572.0	N/A
T16	TREE	28.2	1564.2	N/A
T17	TREE	51.4	1588.0	TRIM TREES
T18	TREE	38.7	1576.7	TRIM TREES
T19	TREE	19.1	1558.3	N/A
T20	TREE	55.3	1593.8	TRIM TREES
T159	TREE	41.4	1601.0	TRIM TREES
T160	TREE	66.6	1627.3	TRIM TREES
T161	TREE	65.1	1624.4	TRIM TREES
T162	TREE	91.3	1630.6	TRIM TREES
T165	TREE	72.0	1609.8	TRIM TREES
T166	TREE	92.4	1628.5	TRIM TREES
T167	TREE	63.5	1599.2	TRIM TREES
T168	TREE	107.0	1642.3	TRIM TREES
T169	TREE	104.2	1639.4	TRIM TREES
T170	TREE	81.3	1616.3	TRIM TREES
T171	TREE	65.0	1600.2	TRIM TREES
T172	TREE	14.2	1544.2	N/A
T173	TREE	30.7	1560.7	N/A
T174	TREE	32.2	1632.2	N/A
T175	TREE	15.5	1582.2	N/A
T176	TREE	40.7	1597.6	N/A
T177	TREE	20.7	1580.6	N/A
T178	TREE	28.9	1583.6	N/A
T179	TREE	17.0	1569.4	N/A
T180	TREE	11.8	1570.4	N/A
T181	TREE	19.8	1580.0	N/A
T182	TREE	56.3	1621.3	N/A
B1	BUILDING	9.7	1540.2	N/A
B2	BUILDING	20.0	1551.2	N/A
B3	BUILDING	17.4	1549.2	N/A
B4	BUILDING	16.9	1549.1	N/A
B5	BUILDING	21.8	1555.2	N/A
B6	BUILDING	12.5	1546.3	N/A
B7	BUILDING	25.4	1560.4	N/A
B8	BUILDING	11.4	1545.6	N/A
B9	BUILDING	13.4	1547.9	N/A
B89	BUILDING	19.3	1561.3	N/A
B90	BUILDING	20.0	1560.2	N/A
B91	BUILDING	32.6	1567.8	N/A
B92	BUILDING	23.1	1558.1	N/A
B93	BUILDING	20.8	1555.8	N/A
B94	BUILDING	28.7	1563.7	N/A
B95	BUILDING	38.1	1568.1	N/A
B96	BUILDING	21.8	1551.8	N/A
B97	BUILDING	15.6	1545.6	N/A
B98	BUILDING	33.8	1563.8	N/A
B99	BUILDING	25.2	1555.2	N/A
B100	BUILDING	25.5	1588.1	N/A
B101	BUILDING	16.5	1582.3	N/A
B102	BUILDING	25.8	1591.2	N/A
B103	BUILDING	24.5	1589.4	N/A
B104	BUILDING	26.7	1591.3	N/A
B105	BUILDING	18.8	1584.1	N/A
B106	BUILDING	24.6	1589.3	N/A
U1	UTILITY POLE	41.8	1594.7	N/A
U2	UTILITY POLE	29.2	1559.5	N/A
U3	UTILITY POLE	29.1	1559.6	N/A
U4	UTILITY POLE	27.5	1560.1	N/A
U5	UTILITY POLE	37.0	1593.4	N/A
U6	UTILITY POLE	24.8	1557.5	N/A
U7	UTILITY POLE	27.2	1560.8	N/A
U8	UTILITY POLE	25.1	1559.0	N/A
U9	UTILITY POLE	29.1	1580.1	N/A
U10	UTILITY POLE	42.2	1577.2	N/A
U11	UTILITY POLE	50.0	1585.0	N/A
U12	UTILITY POLE	40.3	1575.5	N/A
U13	UTILITY POLE	43.9	1583.4	N/A
U14	UTILITY POLE	51.1	1595.1	RELOCATE POLE
U15	UTILITY POLE	23.5	1559.7	N/A
U16	UTILITY POLE	23.7	1561.7	N/A
U17	UTILITY POLE	21.5	1560.7	N/A
U45	UTILITY POLE	69.2	1624.0	RELOCATE POLE
U46	UTILITY POLE	64.3	1622.6	RELOCATE POLE
U47	UTILITY POLE	50.0	1607.4	RELOCATE POLE
U48	UTILITY POLE	48.6	1609.0	RELOCATE POLE
U49	UTILITY POLE	49.2	1606.6	RELOCATE POLE
U50	UTILITY POLE	47.9	1589.9	RELOCATE POLE
U51	UTILITY POLE	33.7	1575.0	RELOCATE POLE
U52	UTILITY POLE	46.8	1581.8	N/A
U53	UTILITY POLE	42.1	1573.4	N/A
U54	UTILITY POLE	67.3	1616.9	N/A
U55	UTILITY POLE	42.2	1594.3	N/A
U56	UTILITY POLE	35.6	1594.1	N/A
U57	UTILITY POLE	37.7	1595.0	N/A
U58	UTILITY POLE	32.1	1593.6	N/A
U59	UTILITY POLE	37.6	1601.5	N/A
U60	UTILITY POLE	31.8	1596.7	N/A
U61	UTILITY POLE	42.7	1608.2	N/A
U62	UTILITY POLE	49.2	1617.2	N/A
M1	FLAG POLE	21.3	1556.3	N/A
M3	S.R. NO. 91	15.0	1561.8	APPLY TSS
M2	DON LEWIS RD	15.0	N/A	N/A

RUNWAY 24 - 20:1 APPROACH (EXISTING)				
NO.	DESCRIPTION	AGL FEET	TOP ELEV	PROPOSED ACTION
T21	TREE	7.2	1600.7	TRIM TREES
T22	TREE	45.8	1645.8	TRIM TREES
T23	TREE	43.1	1642.9	TRIM TREES
T24	TREE	66.7	1669.1	TRIM TREES
T25	TREE	31.7	1638.3	TRIM TREES
T26	TREE	30.0	1650.9	TRIM TREES
T27	TREE	19.0	1642.5	N/A
T28	TREE	52.2	1677.4	TRIM TREES
T29	TREE	32.1	1645.9	N/A
T30	TREE	23.7	1652.2	N/A
T32	TREE	43.5	1663.5	N/A
T35	TREE	19.6	1653.3	TRIM TREES
T36	TREE	37.1	1656.4	N/A
T37	TREE	53.9	1687.7	TRIM TREES
T38	TREE	63.2	1688.0	TRIM TREES
T39	TREE	32.3	1666.3	N/A
T40	TREE	65.2	1680.2	TRIM TREES
T42	TREE	52.3	1696.8	TRIM TREES
T43	TREE	38.5	1677.5	TRIM TREES
T49	TREE	39.1	1678.1	TRIM TREES
T50	TREE	44.1	1684.6	TRIM TREES
T51	TREE	93.3	1714.6	TRIM TREES
T52	TREE	43.6	1690.9	TRIM TREES
T53	TREE	41.2	1682.2	TRIM TREES
T54	TREE	65.5	1700.5	TRIM TREES
T56	TREE	28.6	1674.7	N/A
T58	TREE	45.4	1678.4	N/A
T59	TREE	54.7	1695.6	TRIM TREES
T60	TREE	61.3	1683.6	N/A
T61	TREE	21.2	1609.3	TRIM TREES
T62	TREE	17.7	1607.6	TRIM TREES
T63	TREE	40.8	1632.4	TRIM TREES
T64	TREE	21.1	1612.6	N/A
T65	TREE	46.4	1637.6	TRIM TREES
T66	TREE	26.5	1621.2	TRIM TREES
T67	TREE	32.3	1625.7	TRIM TREES
T70	TREE	40.3	1641.0	TRIM TREES
T71	TREE	50.7	1658.5	TRIM TREES
T72	TREE	73.3	1678.3	TRIM TREES
T73	TREE	86.9	1693.4	TRIM TREES
T74	TREE	81.6	1689.6	TRIM TREES
T75	TREE	63.2	1675.5	TRIM TREES
T76	TREE	66.2	1685.3	TRIM TREES
T77	TREE	59.9	1707.4	TRIM TREES
T78	TREE	55.2	1681.7	TRIM TREES
T79	TREE	20.5	1617.6	TRIM TREES
T80	TREE	108.1	1734.5	TRIM TREES
T81	TREE	30.6	1635.5	TRIM TREES
T82	TREE	25.4	1634.0	TRIM TREES
T83	TREE	122.9	1765.6	TRIM TREES
T85	TREE	50.9	1704.8	TRIM TREES
T86	TREE	114.2	1773.1	TRIM TREES
T106	TREE	24.9	1689.5	TRIM TREES
T107	TREE	33.5	1678.6	TRIM TREES
T108	TREE	34.4	1661.3	TRIM TREES
T109	TREE	38.8	1673.4	TRIM TREES
T110	TREE	64.2	1690.0	TRIM TREES
T111	TREE	68.5	1697.3	TRIM TREES
T112	TREE	84.0	1716.0	TRIM TREES
T120	TREE	76.7	1713.1	TRIM TREES
T122	TREE	69.6	1720.0	TRIM TREES
T123	TREE	43.7	1693.9	TRIM TREES
T124	TREE	68.0	1718.0	TRIM TREES
T125	TREE	79.0	1723.1	TRIM TREES
T141	TREE	47.4	1643.5	N/A
T142	TREE	38.2	1641.7	N/A
T143	TREE	28.8	1637.1	N/A
T144	TREE	46.5	1660.2	N/A
T145	TREE	41.3	1701.5	N/A
T147	TREE	13.7	1636.5	N/A
T158	TREE	20.9	1633.8	N/A
T183	TREE	33.4	1638.6	N/A
T184	TREE	18.9	1618.9	N/A
T185	TREE	34.7	1634.7	N/A
T186	TREE	21.4	1626.4	N/A
T187	TREE	60.1	1665.1	N/A
T188	TREE	28.1	1631.7	N/A
T189	TREE	58.0	1663.0	N/A
T190	TREE	33.8	1641.6	N/A
T191	TREE	24.2	1629.2	N/A
T192	TREE	35.0	1641.4	N/A
T193	TREE	44.0	1653.6	N/A
T194	TREE	69.2	1678.7	N/A
T195	TREE	57.7	1664.9	N/A
T196	TREE	55.5	1683.8	N/A
T197	TREE	38.9	1653.4	N/A
T198	TREE	17.0	1640.3	N/A
T199	TREE	48.3	1708.0	N/A
T200	TREE	27.7	1688.2	N/A
T201	TREE	10.3	1649.6	N/A
T202	TREE	13.7	1654.2	N/A
T203	TREE	20.8	1667.9	N/A
T204	TREE	29.2	1677.9	N/A
T205	TREE	72.1	1707.4	N/A

RUNWAY 24 - 20:1 APPROACH (EXISTING)				
NO.	DESCRIPTION	AGL FEET	TOP ELEV	PROPOSED ACTION
B10	BUILDING	10.0	1602.7	ACQUIRE & REMOVE BUILDING
B11	BUILDING	10.8	1604.1	ACQUIRE & REMOVE BUILDING
B12	BUILDING	15.6	1615.6	N/A
B13	BUILDING	16.5	1619.0	N/A
B14	BUILDING	11.8	1618.7	N/A
B15	BUILDING	13.1	1638.9	N/A
B16	BUILDING	19.3	1630.1	N/A
B17	BUILDING	17.8	1631.7	N/A
B18	BUILDING	14.9	1632.5	N/A
B19	BUILDING	14.5	1644.1	N/A
B20	BUILDING	11.1	1639.6	N/A
B21	BUILDING	17.2	1637.2	N/A
B22	BUILDING	12.2	1622.6	N/A
B23	BUILDING	12.4	1624.2	N/A
B24	BUILDING	14.0	1630.5	N/A
B25	BUILDING	13.3	1644.1	N/A
B26	BUILDING	19.5	1654.3	N/A
B27	BUILDING	16.1	1630.5	N/A
B28	BUILDING	21.7	1660.6	N/A
B29	BUILDING	15.9	1628.2	N/A
B30	BUILDING	21.5	1638.5	N/A
B31	BUILDING	28.8	1669.0	N/A
B32	BUILDING	11.7	1649.2	N/A
B33	BUILDING	13.3	1659.5	N/A
B34	BUILDING	19.1	1664.7	N/A
B35	BUILDING	17.8	1626.9	N/A
B36	BUILDING	22.4	1641.5	N/A
B37	BUILDING	15.0	1630.8	N/A
B38	BUILDING	30.4	1677.7	ACQUIRE & REMOVE BUILDING
B39	BUILDING	14.6	1663.5	N/A
B40	BUILDING	16.8	1657.2	N/A
B41	BUILDING	13.3	1657.9	N/A
B42	BUILDING	19.4	1668.1	N/A
B43	BUILDING	16.2	1658.3	N/A
B44	BUILDING	10.6	1641.5	N/A
B45	BUILDING	12.7	1650.3	N/A
B46	BUILDING	8.1	1614.9	N/A
B47	BUILDING	21.9	1654.4	N/A
B48	BUILDING	17.7	1620.6	N/A
B49	BUILDING	12.3	1646.1	N/A
B50	BUILDING	15.0	1645.0	N/A
B51	BUILDING	19.5	1622.9	N/A
B52	BUILDING	25.8	1645.8	N/A
B53	BUILDING	14.5	1649.1	N/A
B54	BUILDING	21.9	1648.7	N/A
B55	BUILDING	10.9	1613.2	N/A
B56	BUILDING	16.3	1615.0	N/A
B57	BUILDING	17.7	1603.2	ACQUIRE & REMOVE BUILDING
B58	BUILDING	19.6	1609.1	N/A
B59	BUILDING	18.2	1609.2	REMOVE BUILDING
B60	BUILDING	45.7	1690.4	LIGHT
B64	BUILDING	35.8	1690.4	LIGHT
B65	BUILDING	17.1	1632.4	LIGHT
B66	BUILDING	12.7	1627.8	N/A
B74	BUILDING	18.1	1646.7	N/A
B75	BUILDING	20.7	1625.7	N/A