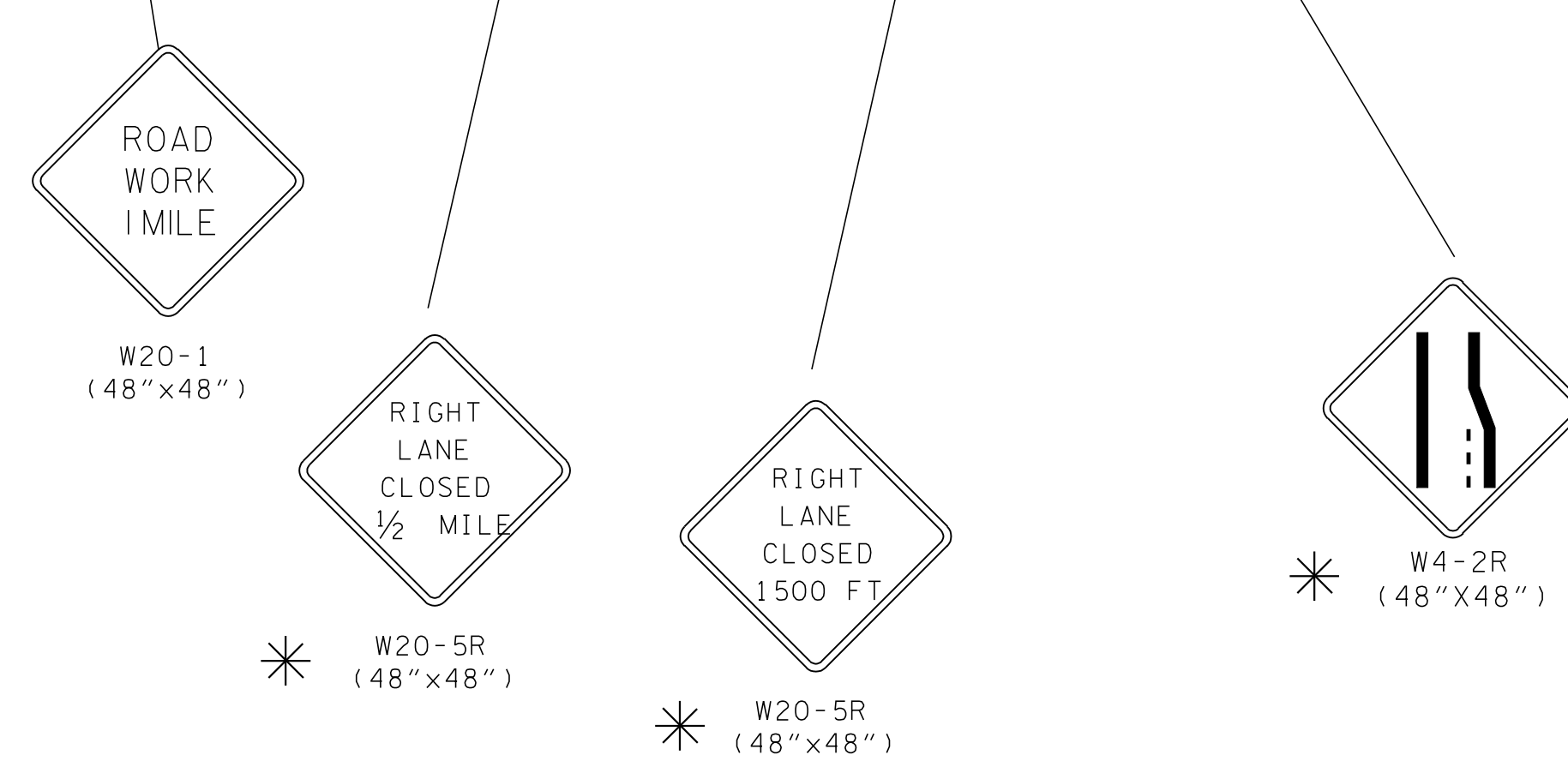
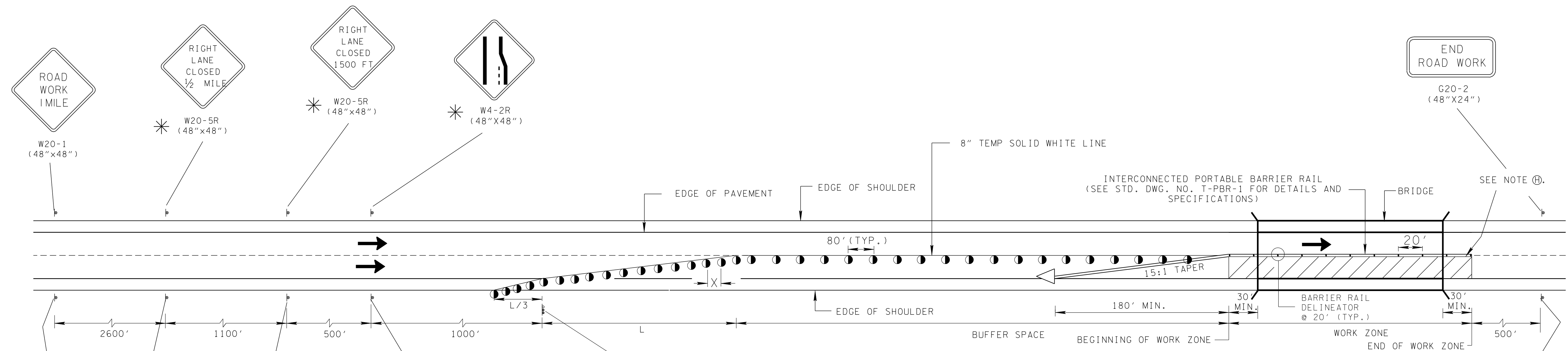


# TRAFFIC CONTROL FOR ONE LANE (RIGHT OR LEFT) CLOSURE FOR BRIDGES ON DIVIDED HIGHWAYS

- REV. 10-06-06: CHANGED ITEM NO. FOR BARRIER RAIL DELINEATOR. ADDED GENERAL NOTE (I). CHANGED GENERAL NOTE (E).
- REV. 03-13-09: CHANGED GENERAL NOTE (E) AND ATTENUATOR LEGEND DESCRIPTION.
- REV. 4-15-99: ADDED GENERAL NOTE (E).
- REV. 12-18-99: MODIFIED GENERAL NOTE (E).
- REV. 7-29-03: CHANGED GENERAL NOTE (E).
- REV. 4-15-04: CHANGED W4-2 SIGN. CHANGED GENERAL NOTE (D) TO COMPLY WITH 2003 MUTCD.
- REV. 9-1-05: REMOVED TYPE "C" WARNING LIGHTS FROM FLEXIBLE DRUMS IN TAPER.
- REV. 5-12-06: REPLACED VERTICAL PANEL WITH BARRIER RAIL DELINEATORS. ADDED GENERAL NOTES (G) & (H).

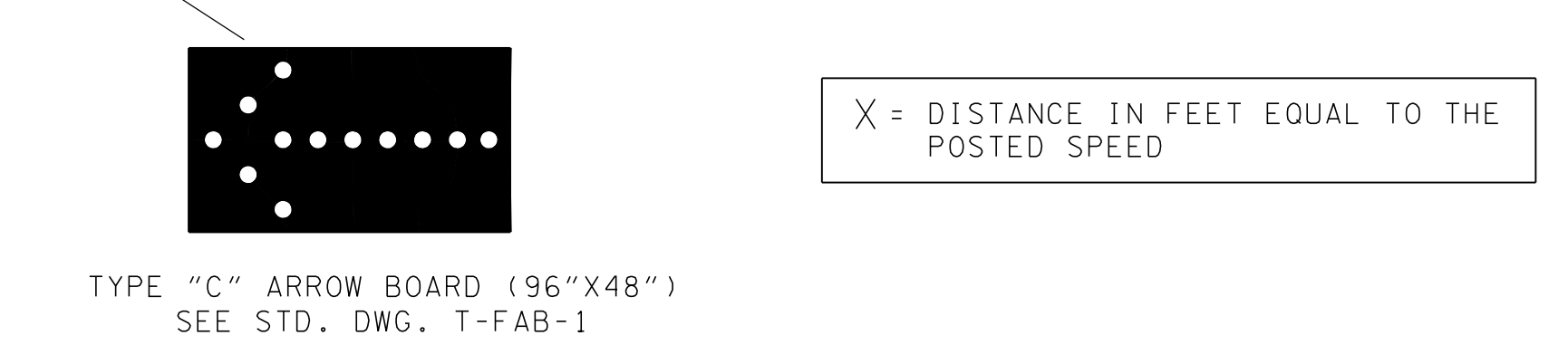


\* FOR LEFT LANE CLOSURE USE SIGNS W20-5L AND W4-2L

**COMPUTATION FOR DISTANCE L**

$L = W \times S$

L = TAPER LENGTH IN FEET  
W = WIDTH OF OFFSET IN FEET  
S = POSTED SPEED



CHANNELIZATION DEVICE LEGEND	
	FLEXIBLE DRUMS
	SIGN SUPPORT
	DIRECTION OF TRAFFIC
	WORK SITE
	BARRIER RAIL DELINEATOR (ITEM NO. 712-04.50, PER EACH)
	FLASHING YELLOW ARROW BOARD (SEE STD. DWG. NO. T-FAB-1, FOR DETAILS AND SPECIFICATIONS)
	ATTENUATOR (SEE STANDARD DRAWINGS)

- GENERAL NOTES**
- (A) THIS STANDARD CAN BE USED FOR THE CLOSURE OF AN INSIDE OR OUTSIDE LANE OF ANY MULTI-LANE DIVIDED HIGHWAY. FOR THE CLOSURE OF AN INTERIOR LANE, SEE STANDARD DRAWING NOS. T-WZ-13, T-WZ-14, AND T-WZ-15 FOR DETAILS.
  - (B) PORTABLE BARRIER RAIL REQUIRED FOR BRIDGE DECK AND EXPANSION JOINT WORK.
  - (C) SEE STANDARD DRAWING NO. T-WZ-10 FOR OTHER NEEDED ADVANCE SIGNING.
  - (D) SEE TABLE 6C-2 OF PART VI OF THE MANUAL ON UNIFORM TRAFFIC CONTROL DEVICES (MUTCD) FOR RECOMMENDED LENGTHS OF BUFFER SPACE WHICH ARE BASED ON STOPPING SIGHT DISTANCE AS A FUNCTION OF SPEED.
  - (E) TAPER LENGTH SHOWN FOR THE PORTABLE BARRIER RAIL IS A MINIMUM. PORTABLE BARRIER RAIL SHOULD BE EXTENDED BEYOND THE CLEAR ZONE OR BE SHIELDED WITH AN ATTENUATOR WHEN IT IS NOT FEASIBLE TO EXTEND THE PORTABLE BARRIER RAIL. SEE STANDARD DRAWING R001-S-12 FOR CLEAR ZONE DISTANCE.
  - (F) A SECOND ARROW BOARD MAY BE USED WHEN GEOMETRIC CONDITIONS LIMITS THE VISIBILITY OF A LANE CLOSURE.
  - (G) BARRIER RAIL DELINEATORS (ITEM NO. 712-04.50) SHALL BE USED ON PORTABLE BARRIER RAIL. REFER TO THE QUALIFIED PRODUCT LIST FOR APPROVED BARRIER RAIL DELINEATORS. DIFFERENT TYPES OF BARRIER RAIL DELINEATORS SHOULD NOT BE MIXED IN THE SAME LINE.
  - (H) MINIMUM TWO FEET (2') OFFSET BETWEEN TRAVEL LANE AND PORTABLE CONCRETE BARRIER IS REQUIRED. THE MAXIMUM POSSIBLE OFFSET BETWEEN TRAVEL LANE AND PORTABLE BARRIER MUST BE OBTAINED. TWO FEET (2') OFFSET MAY BE ELIMINATED WHERE PHYSICAL CONDITIONS DO NOT ALLOW.
  - (I) RAISED PAVEMENT MARKERS SHOULD NOT BE USED ON RIGHT EDGE LINE.

MINOR REVISION -- FHWA APPROVAL NOT REQUIRED.

STATE OF TENNESSEE  
DEPARTMENT OF TRANSPORTATION

**ONE LANE CLOSURE  
DETAIL FOR BRIDGES  
ON  
DIVIDED HIGHWAYS**

5-27-98      T-WZ-12