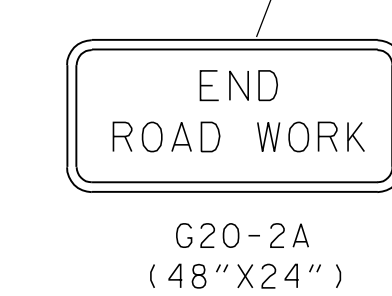
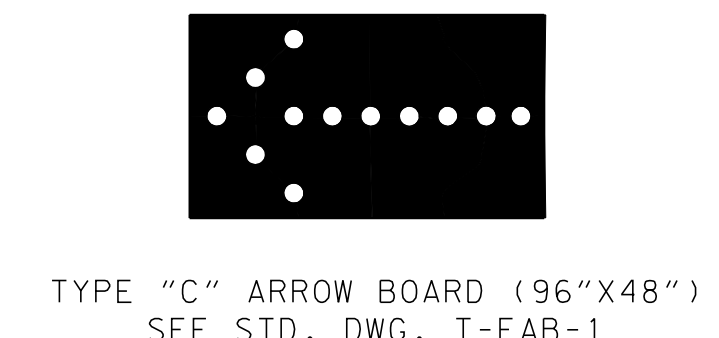
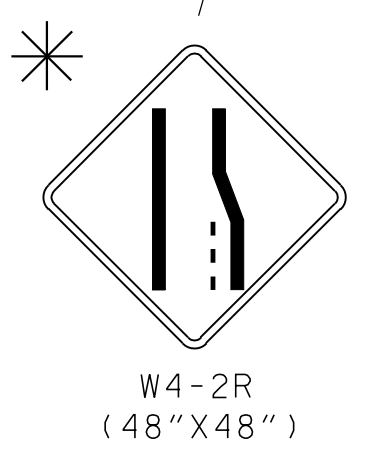
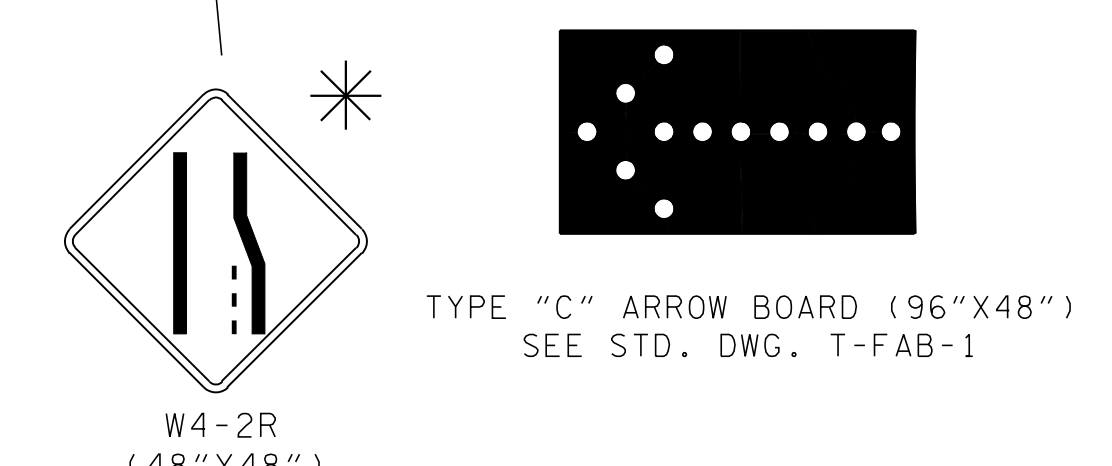
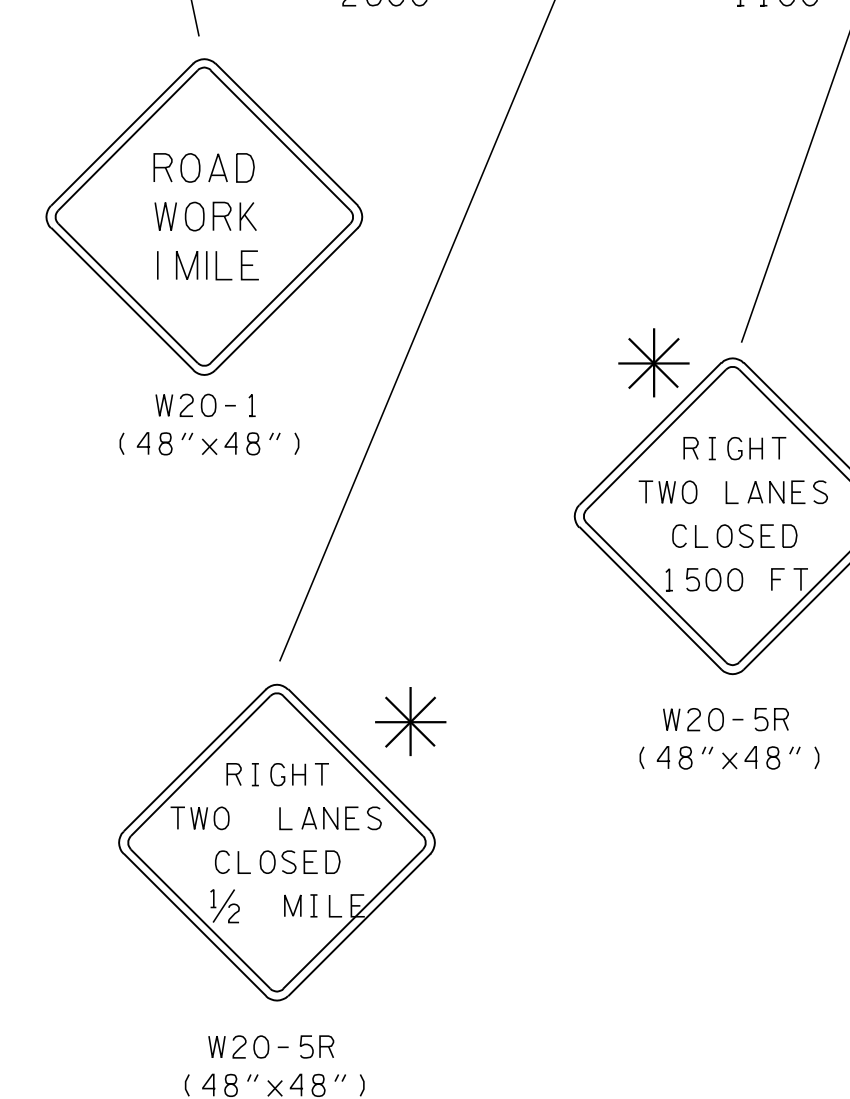
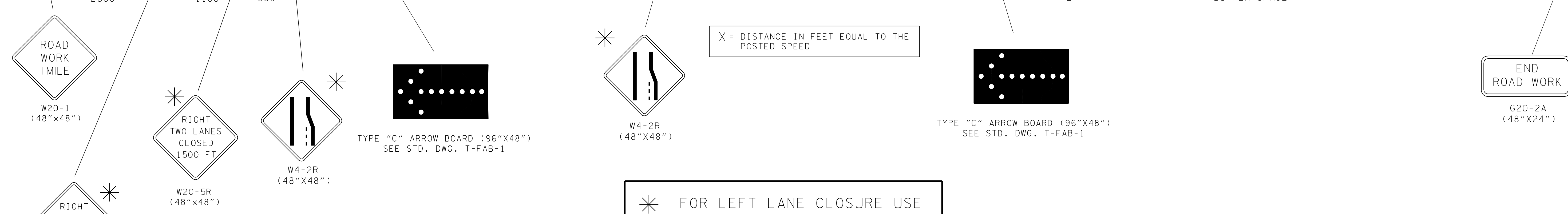
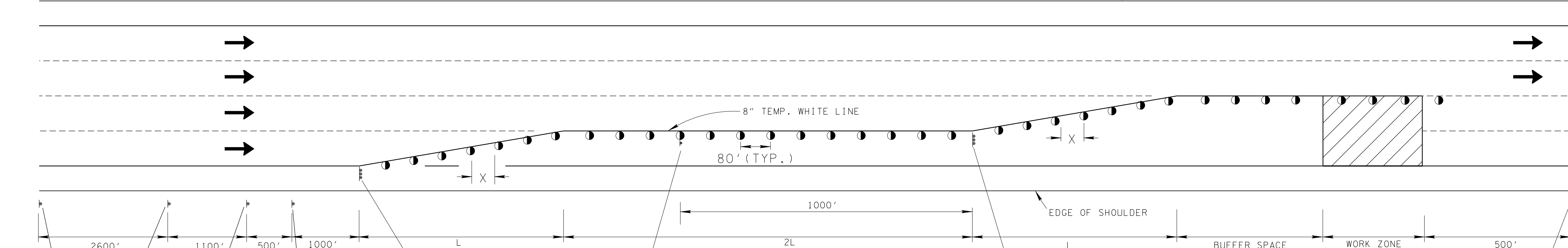
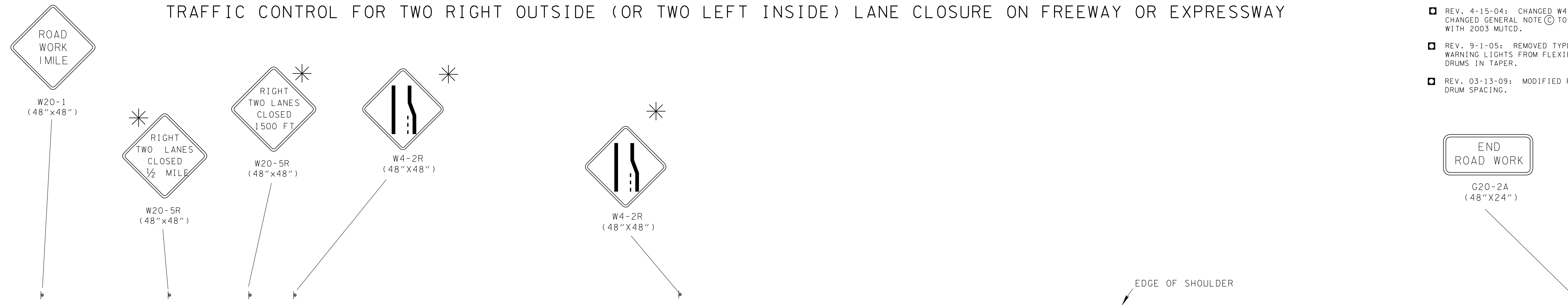


TRAFFIC CONTROL FOR TWO RIGHT OUTSIDE (OR TWO LEFT INSIDE) LANE CLOSURE ON FREEWAY OR EXPRESSWAY

- REV. 12-18-99: MODIFIED HEADING AND ADDED BLOCKED IN NOTE FOR TWO LEFT INSIDE LANE CLOSURE.
- REV. 4-15-04: CHANGED W4-2 SIGN. CHANGED GENERAL NOTE © TO COMPLY WITH 2003 MUTCD.
- REV. 9-1-05: REMOVED TYPE "C" WARNING LIGHTS FROM FLEXIBLE DRUMS IN TAPER.
- REV. 03-13-09: MODIFIED FLEXIBLE DRUM SPACING.



GENERAL NOTES

(A) FOR CLOSURE OF TWO LEFT LANES THE CHANNELIZING DEVICES SHALL BE SET UP SYMMETRICALLY TO THE 2 RIGHT LANES CLOSURE SET UP AND THE SIGNING SHALL REFLECT THE 2 LEFT LANES CLOSURE. THIS STANDARD APPLIES TO FREEWAYS AND EXPRESSWAYS WITH 6 OR MORE LANES.

(B) SEE STANDARD DRAWING NO. T-WZ-10 FOR OTHER NEEDED ADVANCE SIGNING.

(C) SEE TABLE 6C-2 OF PART VI OF THE MANUAL ON UNIFORM TRAFFIC CONTROL DEVICES (MUTCD) FOR RECOMMENDED LENGTHS OF BUFFER SPACE WHICH ARE BASED ON STOPPING SIGHT DISTANCE AS A FUNCTION OF SPEED.

* FOR LEFT LANE CLOSURE USE SIGNS W20-5L AND W4-2L

$L = W \times S$

L = TAPER LENGTH IN FEET
 W = WIDTH OF OFFSET IN FEET
 S = POSTED SPEED

CHANNELIZATION DEVICE LEGEND	
	FLEXIBLE DRUMS
	SIGN SUPPORT
	DIRECTION OF TRAFFIC
	WORK SITE
	FLASHING YELLOW ARROW BOARD (SEE STD. DWG. NO. T-FAB-1, FOR DETAILS AND SPECIFICATIONS)

□ MINOR REVISION -- FHWA APPROVAL NOT REQUIRED.

STATE OF TENNESSEE
 DEPARTMENT OF TRANSPORTATION

TWO-OUTSIDE LANE CLOSURE ON FREEWAY OR EXPRESSWAY

5-27-98 T-WZ-13