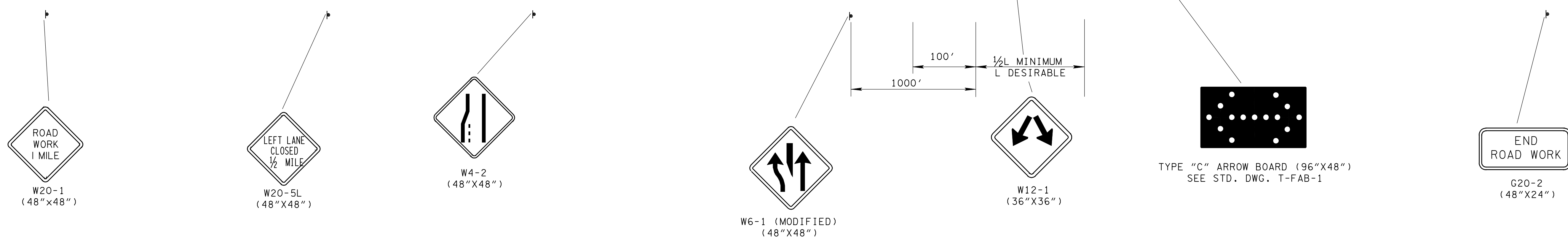
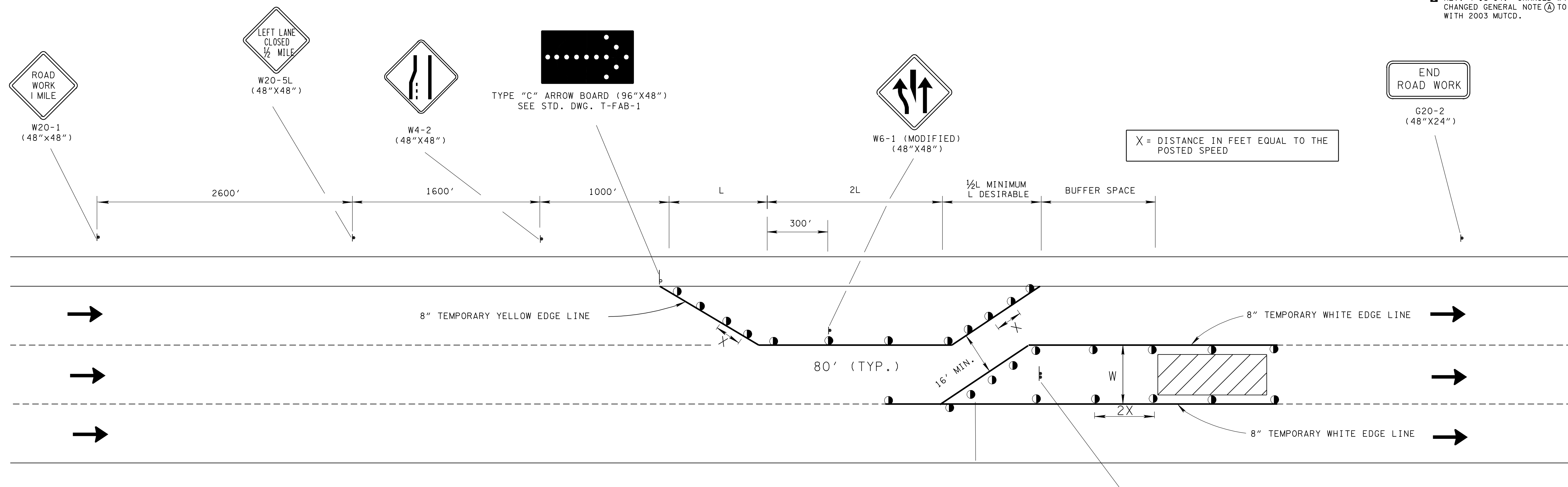


TRAFFIC CONTROL FOR INTERIOR LANE CLOSURE ON FREEWAYS OR EXPRESSWAYS

- REV. 9-1-05: REMOVED TYPE "C" WARNING LIGHTS FROM FLEXIBLE DRUMS IN TAPER.
- REV. 03-13-09: MODIFIED FLEXIBLE DRUM SPACING.
- REV. 4-2-12: CHANGED SIGN G20-2A TO G20-2.
- REV. 2-28-98: ADDED CHANNELIZATION DEVICE LEGEND. CHANGED LEGEND FOR FLEXIBLE DRUMS. MODIFIED HEADING AND SHEET NAME.
- REV. 5-27-98: CHANGED DRAWING NO. T-WZ-10 TO T-WZ-15. ADDED GENERAL NOTES.
- REV. 4-15-04: CHANGED W4-2 SIGN. CHANGED GENERAL NOTE (A) TO COMPLY WITH 2003 MUTCD.



COMPUTATION FOR DISTANCE L





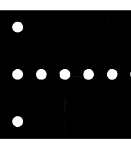
$L = W \times S$

L = TAPER LENGTH IN FEET.
 W = WIDTH OF OFFSET IN FEET.
 S = POSTED SPEED

GENERAL NOTES

(A) SEE TABLE 6C-2 OF PART VI OF THE MANUAL ON UNIFORM TRAFFIC CONTROL DEVICES (MUTCD) FOR RECOMMENDED LENGTHS OF BUFFER SPACE WHICH ARE BASED ON STOPPING SIGHT DISTANCE AS A FUNCTION OF SPEED.

(B) SEE STANDARD DRAWING NO. T-WZ-10 FOR OTHER NEEDED ADVANCE SIGNING.

CHANNELIZATION DEVICE LEGEND	
	FLEXIBLE DRUMS
	SIGN SUPPORT
	DIRECTION OF TRAFFIC
	WORK SITE
	FLASHING YELLOW ARROW BOARD (SEE STD. DWG. NO. T-FAB-1, FOR DETAILS AND SPECIFICATIONS)

MINOR REVISION -- FHWA APPROVAL NOT REQUIRED.

STATE OF TENNESSEE
DEPARTMENT OF TRANSPORTATION

INTERIOR LANE CLOSURE ON FREEWAYS OR EXPRESSWAYS

12-18-94 T-WZ-15