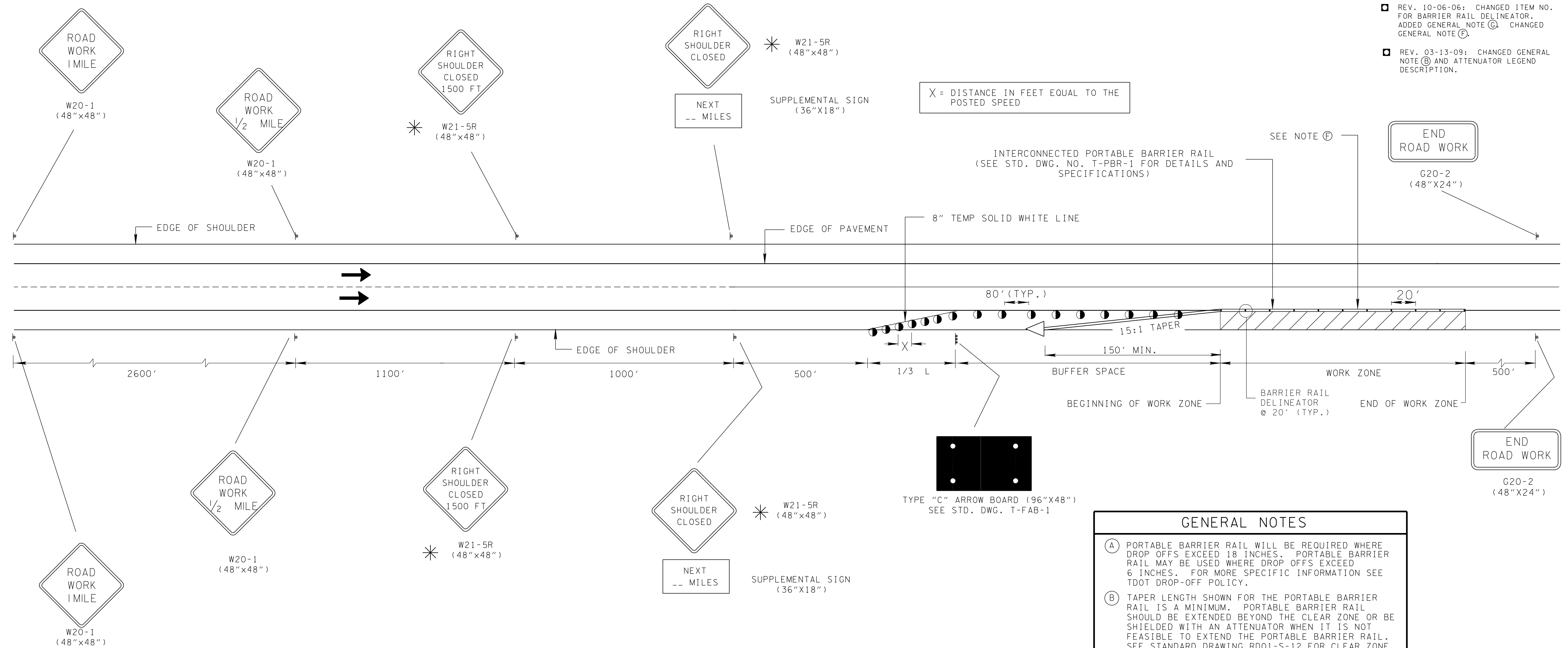


TRAFFIC CONTROL FOR SHOULDER CLOSURE FOR FREEWAYS AND DIVIDED HIGHWAYS

- REV. 4-15-99: MODIFIED CHANNELIZATION DEVICE LEGEND.
- REV. 12-18-99: MODIFIED GENERAL NOTE (B).
- REV. 7-29-03: CHANGED GENERAL NOTE (B).
- REV. 4-15-04: CHANGED GENERAL NOTE (D) TO COMPLY WITH 2003 MUTCD.
- REV. 5-12-06: REPLACED VERTICAL PANEL WITH BARRIER RAIL DELINEATORS. ADDED GENERAL NOTES (E) & (F).
- REV. 10-06-06: CHANGED ITEM NO. FOR BARRIER RAIL DELINEATOR. ADDED GENERAL NOTE (G). CHANGED GENERAL NOTE (E).
- REV. 03-13-09: CHANGED GENERAL NOTE (B) AND ATTENUATOR LEGEND DESCRIPTION.



* FOR LEFT SHOULDER CLOSURES USE SIGNS W21-5L (LEFT SHOULDER CLOSED 1500 FT AND LEFT SHOULDER CLOSED)

COMPUTATION FOR DISTANCE L

$L = W \times S$

L = TAPER LENGTH IN FEET
 W = WIDTH OF OFFSET IN FEET
 S = POSTED SPEED

CHANNELIZATION DEVICE LEGEND	
●	FLEXIBLE DRUMS
P	SIGN SUPPORT
←	DIRECTION OF TRAFFIC
▨	WORK SITE
⊞	BARRIER RAIL DELINEATOR (ITEM NO. 712-04.50, PER EACH)
⬛	FLASHING YELLOW ARROW BOARD (SEE STD. DWG. NO. T-FAB-1, FOR DETAILS AND SPECIFICATIONS)
◁	ATTENUATOR (SEE STANDARD DRAWINGS)

- GENERAL NOTES**
- (A) PORTABLE BARRIER RAIL WILL BE REQUIRED WHERE DROP OFFS EXCEED 18 INCHES. PORTABLE BARRIER RAIL MAY BE USED WHERE DROP OFFS EXCEED 6 INCHES. FOR MORE SPECIFIC INFORMATION SEE TDOT DROP-OFF POLICY.
 - (B) TAPER LENGTH SHOWN FOR THE PORTABLE BARRIER RAIL IS A MINIMUM. PORTABLE BARRIER RAIL SHOULD BE EXTENDED BEYOND THE CLEAR ZONE OR BE SHIELDED WITH AN ATTENUATOR WHEN IT IS NOT FEASIBLE TO EXTEND THE PORTABLE BARRIER RAIL. SEE STANDARD DRAWING RD01-S-12 FOR CLEAR ZONE DISTANCE.
 - (C) SEE STANDARD DRAWING NO. T-WZ-10 FOR OTHER NEEDED ADVANCE SIGNING.
 - (D) SEE TABLE 6C-2 OF PART VI OF THE MANUAL ON UNIFORM TRAFFIC CONTROL DEVICES (MUTCD) FOR RECOMMENDED LENGTHS OF BUFFER SPACE WHICH ARE BASED ON STOPPING SIGHT DISTANCE AS A FUNCTION OF SPEED.
 - (E) BARRIER RAIL DELINEATORS (ITEM NO. 712-04.50) SHALL BE USED ON PORTABLE BARRIER RAIL. REFER TO THE QUALIFIED PRODUCT LIST FOR APPROVED BARRIER RAIL DELINEATORS. DIFFERENT TYPES OF BARRIER RAIL DELINEATORS SHOULD NOT BE MIXED IN THE SAME LINE.
 - (F) MINIMUM TWO FEET (2') OFFSET BETWEEN TRAVEL LANE AND PORTABLE CONCRETE BARRIER IS REQUIRED. THE MAXIMUM POSSIBLE OFFSET BETWEEN TRAVEL LANE AND PORTABLE BARRIER MUST BE OBTAINED. TWO FEET (2') OFFSET MAY BE ELIMINATED WHERE PHYSICAL CONDITIONS DO NOT ALLOW.
 - (G) RAISED PAVEMENT MARKERS SHOULD NOT BE USED ON RIGHT EDGE LINE.