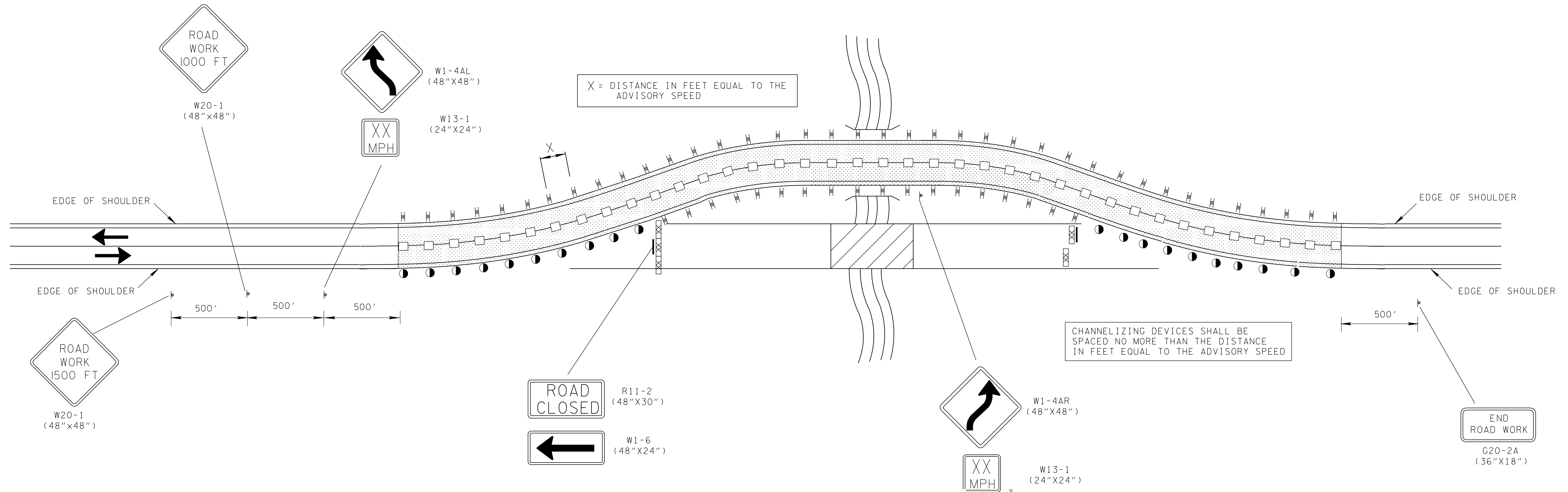


TRAFFIC CONTROL FOR 2-LANE, 2-WAY DIVERSION DETAIL (FOR 40 MILES PER HOUR OR LESS)

- ❑ REV. 4-15-99: ADDED GENERAL NOTE (C).
- ❑ REV. 12-18-99: MODIFIED GENERAL NOTE (A).
- ❑ REV. 7-29-03: CHANGED SIZE OF END ROAD WORK CONSTRUCTION FROM 48" X 24" TO 36" X 18".
- ❑ REV. 4-15-04: CHANGED W13-1 SIGN.
- ❑ REV. 9-1-05: REMOVED TYPE "C" WARNING LIGHTS FROM FLEXIBLE DRUMS IN TAPER. REMOVED TYPE "C" WARNING LIGHT NOTE FROM GENERAL NOTES.




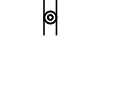

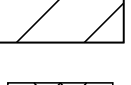

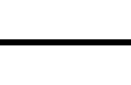
GENERAL NOTES

(A) SIGNS SHOWN ARE FOR ONE DIRECTION OF TRAVEL ONLY.

(B) THIS STANDARD FOR 2-LANE, 2-WAY DIVERSION IS TO BE USED FOR DESIGN SPEEDS LESS THAN OR EQUAL TO 40 MPH.

(C) DESIGN SPEED OF DIVERSION SHOULD BE NO MORE THAN 10 MPH BELOW THE POSTED SPEED LIMIT. SEE PLANS FOR HORIZONTAL AND VERTICAL GEOMETRIC DETAILS OF DIVERSION.

(D) SIGNS MOUNTED TO TYPE III BARRICADES SHALL BE MOUNTED ABOVE THE BARRICADE.

CHANNELIZATION DEVICE LEGEND	
	SIGN SUPPORT
	VERTICAL PANELS (BACK TO BACK)
	DIRECTION OF TRAFFIC
	WORK SITE
	TYPE III BARRICADE WITH SIGNS ATTACHED
	RAISED PAVEMENT MARKER (SEE APPROVED QUALIFIED PRODUCT LIST) - OPTIONAL

CONSTRUCTION SIGN QUANTITIES
(ITEM NO. 712-06)

AREA = 189 S.F.