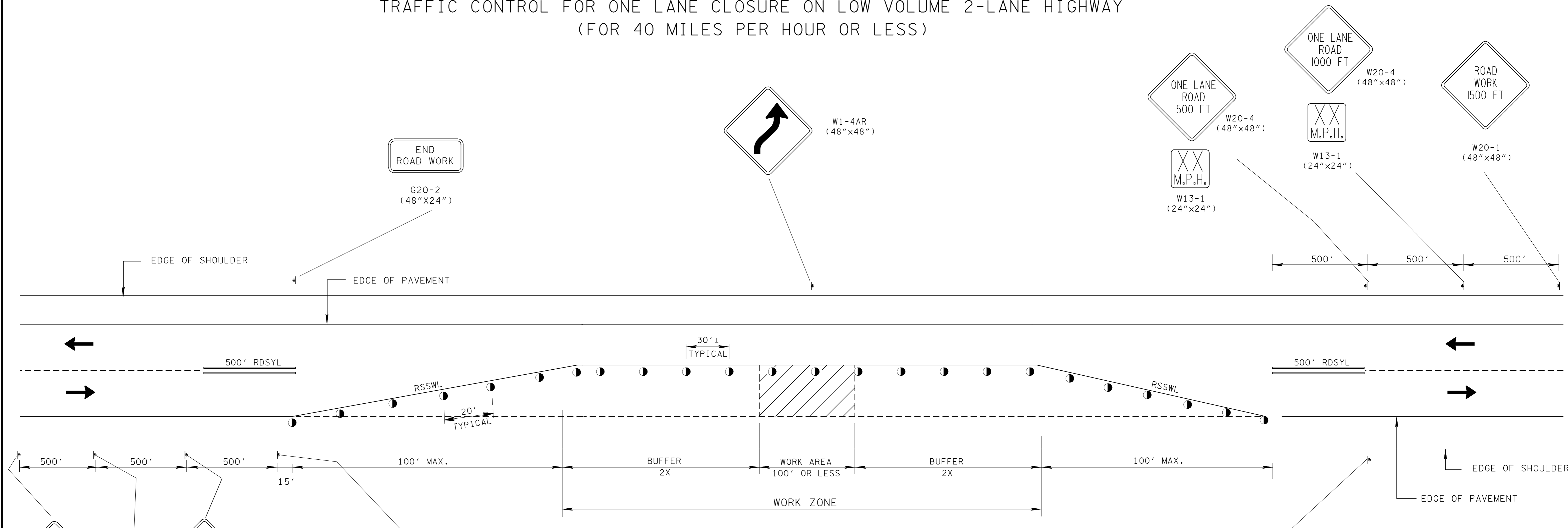


TRAFFIC CONTROL FOR ONE LANE CLOSURE ON LOW VOLUME 2-LANE HIGHWAY (FOR 40 MILES PER HOUR OR LESS)

- REV. 9-1-05: REMOVED TYPE "C" WARNING LIGHTS FROM FLEXIBLE DRUMS IN TAPER.
- REV. 4-15-99: MODIFIED CHANNELIZATION DEVICE LEGEND.
- REV. 4-2-12: ADDED 15' BETWEEN YIELD SIGN AND START OF TAPER, UPDATED G20-2A TO G20-2.
- REV. 12-18-99: ELIMINATED CONCRETE PORTABLE BARRIER WALL AND MODIFIED GENERAL NOTE (A).
- REV. 1-19-00: DELETED GENERAL NOTE (B).



X = DISTANCE IN FEET EQUAL TO THE POSTED SPEED

GENERAL NOTES

(A) THIS TRAFFIC CONTROL APPLICATION MAY BE USED WHEN CURRENT ADT IS 750 OR LESS, POSTED SPEED OF 40 MPH OR LESS, WORK AREA IS 100' OR LESS, AND SIGHT DISTANCE MUST BE SUFFICIENT WHERE DRIVERS FROM BOTH DIRECTIONS CAN SEE APPROACHING TRAFFIC THROUGH AND BEYOND THE WORK SITE.

CHANNELIZATION DEVICE LEGEND	
	SIGN SUPPORT
●	FLEXIBLE DRUMS
←	DIRECTION OF TRAFFIC
▨	WORK SITE
—	REMOVABLE PAVEMENT MARKING (SINGLE SOLID WHITE LINE)
=	REMOVABLE PAVEMENT MARKING (DOUBLE SOLID YELLOW LINE)