

TRAFFIC CONTROL FOR SIGNAL ONLY PROJECTS WITH 2 OR 3 LANES ENTERING FROM ALL DIRECTIONS

REV. 4-2-12: CHANGED SIGN G20-2A TO G20-2.

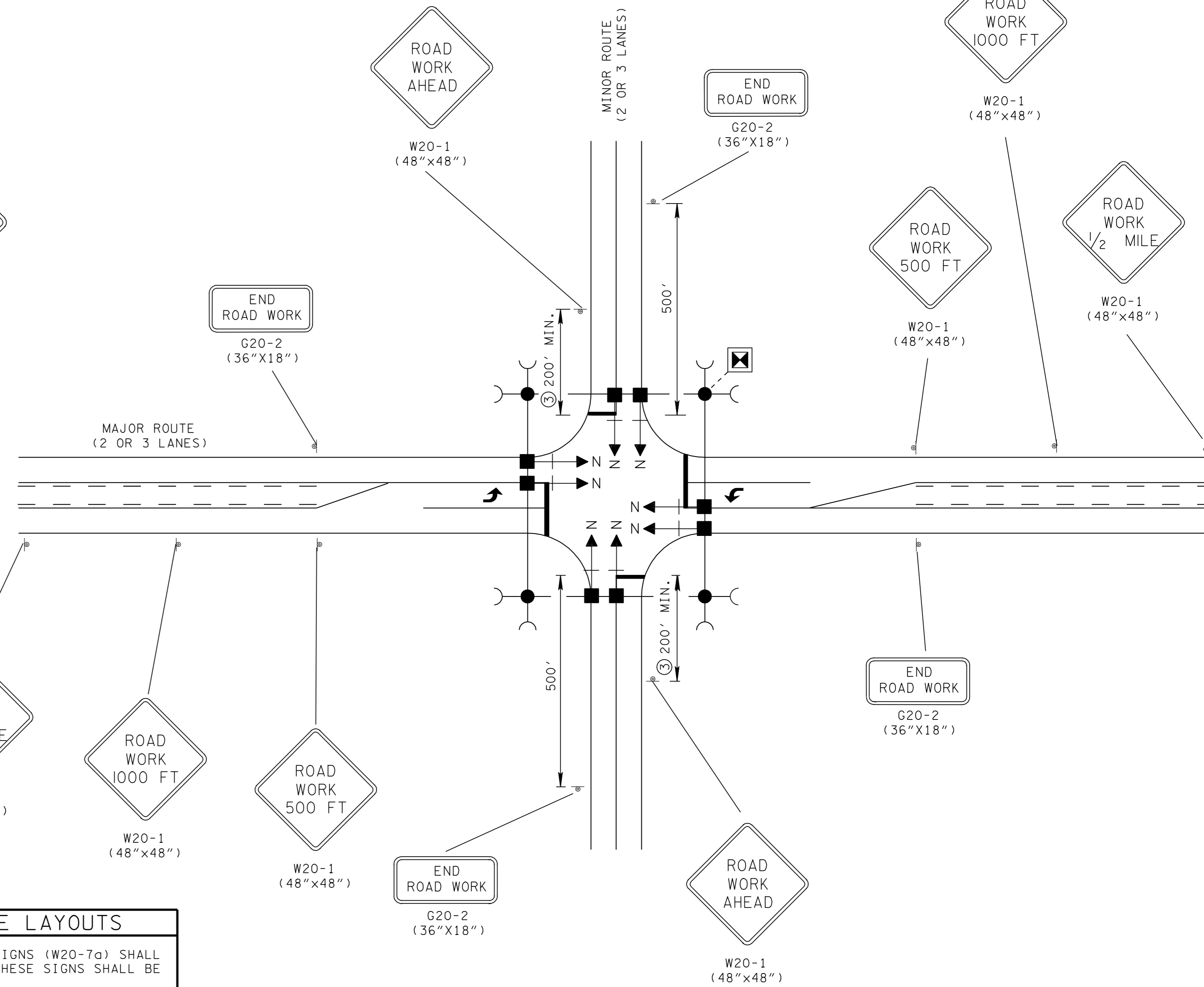
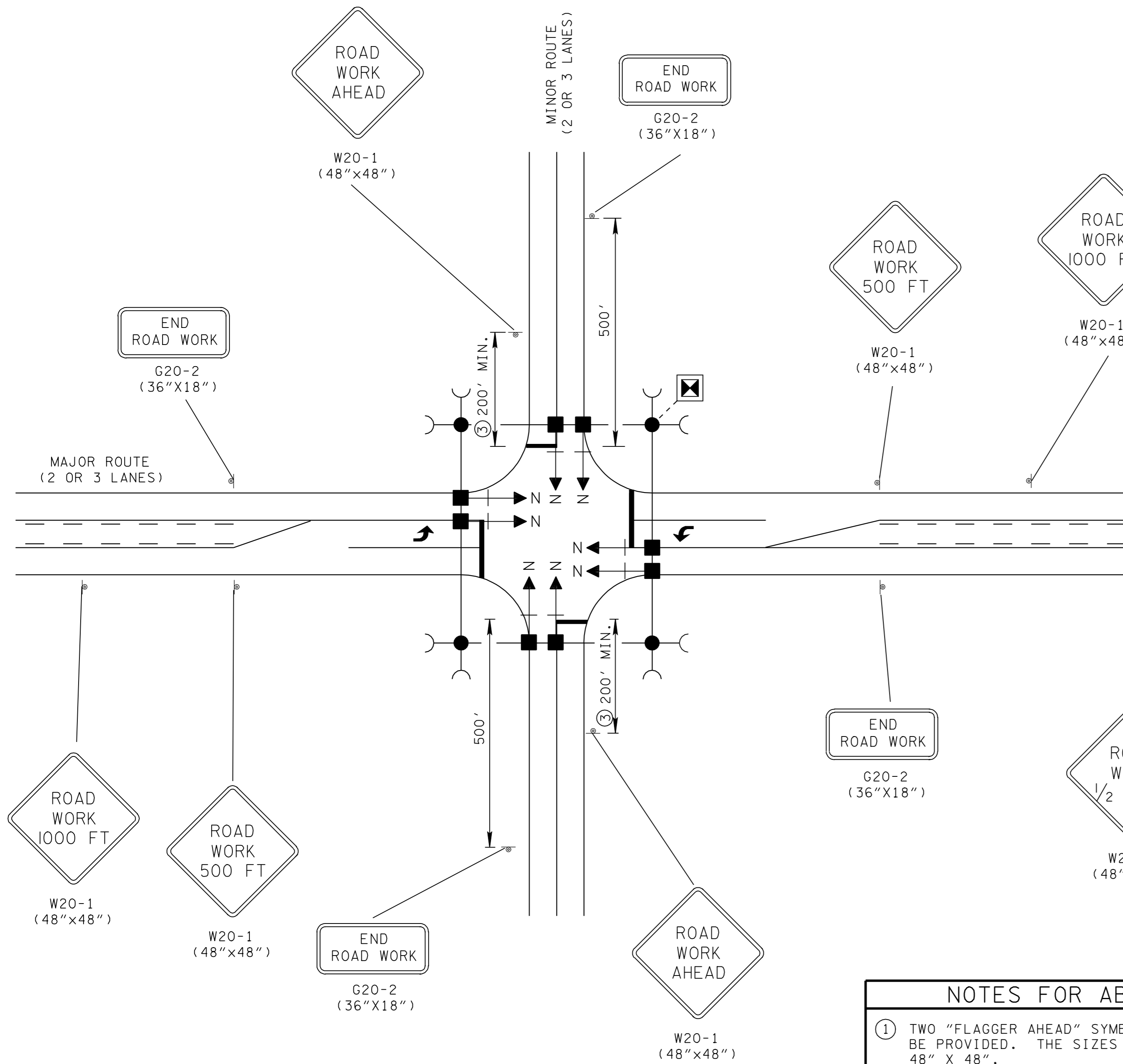
REV. 10-26-98: CHANGED CONSTRUCTION SIGN QUANTITIES.

REV. 12-18-99: IN NOTES FOR ABOVE LAYOUT BLOCK DELETED OLD NOTE NO. ②.

REV. 7-29-03: CHANGED SIZE OF END ROAD WORK CONSTRUCTION SIGN FROM 48"X24" TO 36"X18".

DETAIL FOR 40 MPH DESIGN OR LESS

DETAIL FOR GREATER THAN 40 MPH DESIGN



NOTES FOR ABOVE LAYOUTS

① TWO "FLAGGER AHEAD" SYMBOL SIGNS (W20-7d) SHALL BE PROVIDED. THE SIZES OF THESE SIGNS SHALL BE 48" X 48".

② SEE TABLE VI-3 IN PART VI OF THE MUTCD (CURRENT EDITION).

CONSTRUCTION SIGN QUANTITIES (ITEM NO. 712-06)	
"T" INTERSECTIONS	- 93.5 S.F.
4 - LEGGED INTERSECTIONS	- 114 S.F.

LEGEND	
	PAD MOUNTED CONTROLLER
	WOOD POLE FOR SIGNAL SUPPORT
	GUYING DEVICE ANGLE ANCHOR
	SIGNAL HEAD WITH NUMBER AND BACKPLATE

CONSTRUCTION SIGN QUANTITIES (ITEM NO. 712-06)	
"T" INTERSECTIONS	- 125.5 S.F.
4 - LEGGED INTERSECTIONS	- 146 S.F.

MINOR REVISION -- FHWA APPROVAL NOT REQUIRED.

STATE OF TENNESSEE
DEPARTMENT OF TRANSPORTATION

TRAFFIC CONTROL FOR SIGNALS ONLY PROJECTS ON 2 OR 3 LANE MAJOR ROUTES