

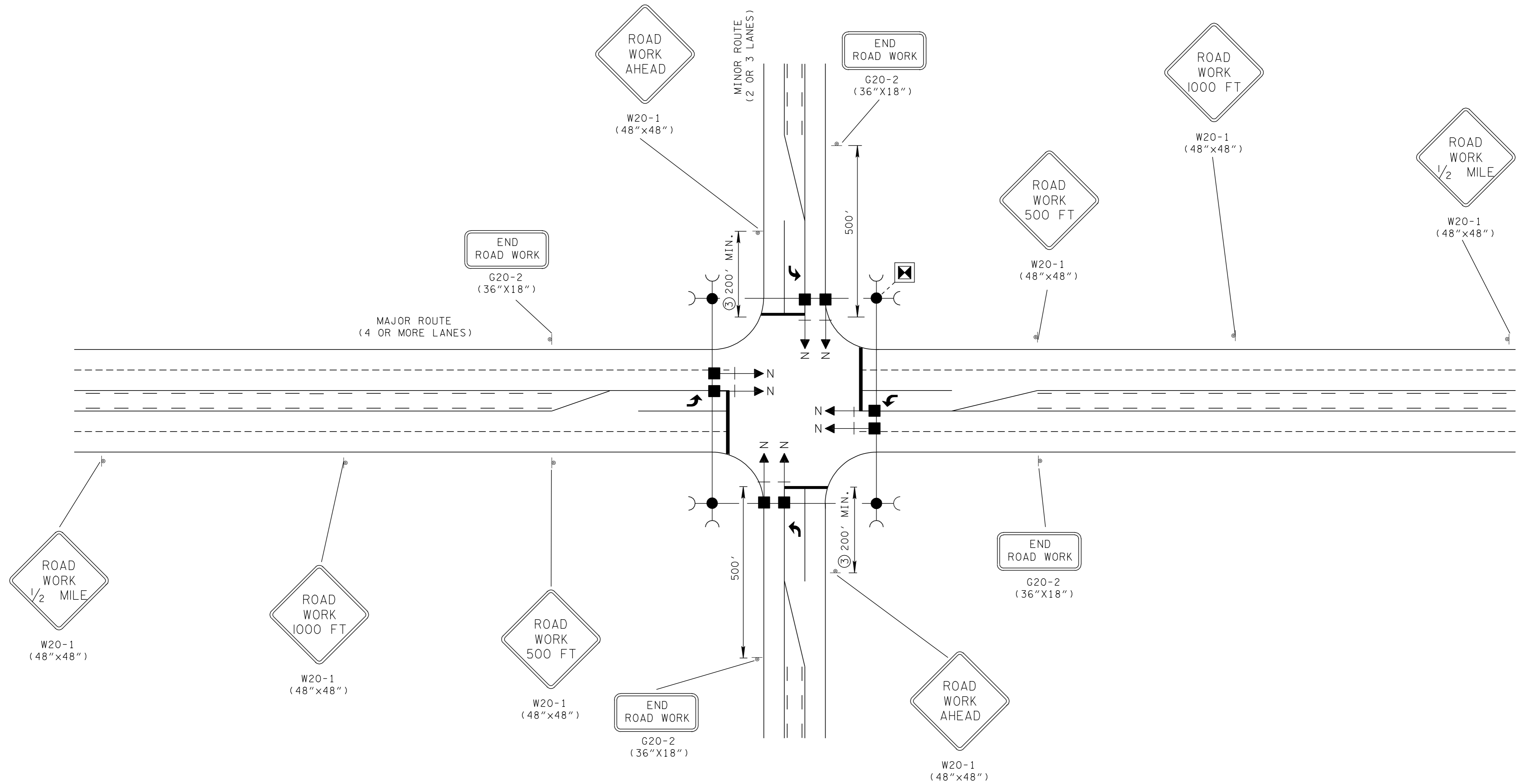
TRAFFIC CONTROL FOR SIGNAL ONLY PROJECTS WITH A 4 OR 5 LANE MAJOR ROUTE AND A 2 OR 3 LANE MINOR ROUTE

REV. 10-26-98: CHANGED CONSTRUCTION SIGN QUANTITIES.

REV. 12-18-99: IN NOTES FOR ABOVE LAYOUT BLOCK DELETED OLD NOTE NO. ②.

REV. 7-29-03: CHANGED SIZE OF END ROAD WORK CONSTRUCTION SIGN FROM 48"X24" TO 36"X18".



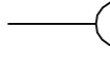
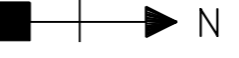
REV. 4-2-12: CHANGED SIGN G20-2A TO G20-2.



NOTES FOR ABOVE LAYOUT

① ONE LEFT LANE CLOSED 1000 FT. SIGN (W20-5L), ONE RIGHT LANE CLOSED 1000 FT. SIGN (W20-5R), ONE "LEFT LANE MERGE" SYMBOL SIGN (W4-2L), ONE "RIGHT LANE MERGE" SYMBOL SIGN (W4-2R), AND TWO "FLAGGER AHEAD" SYMBOL SIGNS (W20-7a) SHALL BE PROVIDED. THE SIZES OF THESE SIGNS SHALL BE 48"X48". SEE STANDARD DRAWING NOS. T-WZ-40 AND T-WZ-41 FOR MORE DETAILS.

② SEE TABLE VI-3 IN PART VI OF THE MUTCD (CURRENT EDITION).

LEGEND	
	PAD MOUNTED CONTROLLER
	WOOD POLE FOR SIGNAL SUPPORT
	GUYING DEVICE ANGLE ANCHOR
	SIGNAL HEAD WITH NUMBER AND BACKPLATE

CONSTRUCTION SIGN QUANTITIES (ITEM NO. 712-06)	
"T" INTERSECTIONS	- 125.5 S.F.
4 - LEGGED INTERSECTIONS	- 146 S.F.

MINOR REVISION -- FHWA APPROVAL NOT REQUIRED.

STATE OF TENNESSEE
DEPARTMENT OF TRANSPORTATION

TRAFFIC CONTROL FOR SIGNALS ONLY
PROJECTS ON 4 OR 5 LANE MAJOR ROUTES