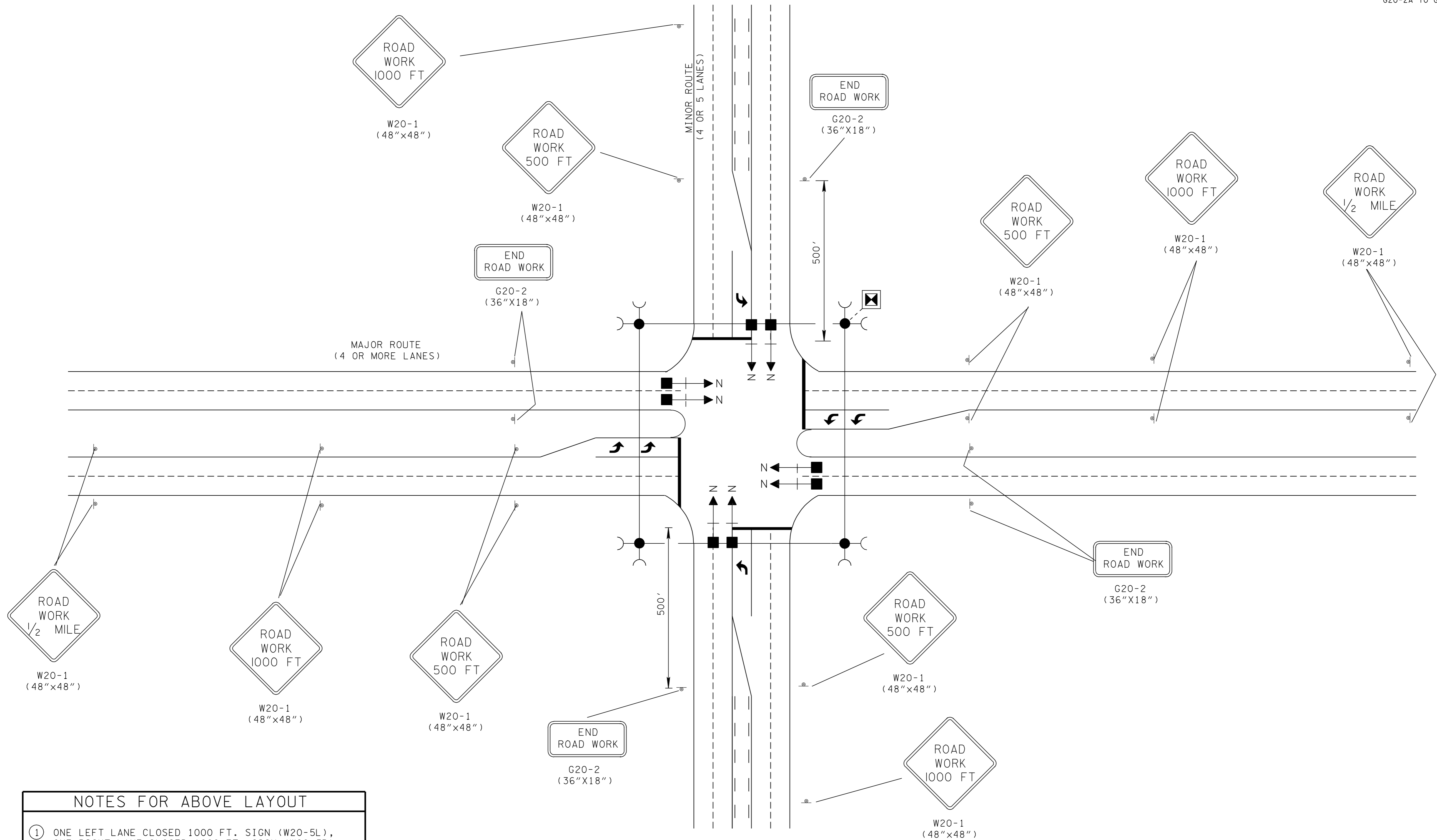


TRAFFIC CONTROL FOR SIGNAL ONLY PROJECTS WITH 4 OR MORE LANE DIVIDED MAJOR ROUTES AND 4 OR MORE LANE MINOR ROUTES

- REV. 12-18-99: IN NOTES FOR ABOVE LAYOUT BLOCK DELETED OLD NOTE NO. ②.
- REV. 7-29-03: CHANGED SIZE OF END ROAD WORK CONSTRUCTION SIGN FROM 48"X24" TO 36"X18".
- REV. 4-2-12: CHANGED SIGN G20-2A TO G20-2.



NOTES FOR ABOVE LAYOUT

① ONE LEFT LANE CLOSED 1000 FT. SIGN (W20-5L), ONE RIGHT LANE CLOSED 1000 FT. SIGN (W20-5R), ONE "LEFT LANE MERGE" SYMBOL SIGN (W4-2L), AND ONE "RIGHT LANE MERGE" SYMBOL SIGNS (W4-2R), SHALL BE PROVIDED. THE SIZES OF THESE SIGNS SHALL BE 48"X48". SEE STANDARD DRAWING NOS. T-WZ-40 AND T-WZ-41 FOR MORE DETAILS.

LEGEND

☒	PAD MOUNTED CONTROLLER
●	WOOD POLE FOR SIGNAL SUPPORT
—(GUYING DEVICE ANGLE ANCHOR
■ → N	SIGNAL HEAD WITH NUMBER AND BACKPLATE

CONSTRUCTION SIGN QUANTITIES (ITEM NO. 712-06)	
"T" INTERSECTIONS	- 246.5 S.F.
4 - LEGGED INTERSECTIONS	- 283 S.F.

□ MINOR REVISION -- FHWA APPROVAL NOT REQUIRED.