

Interstate 24 Multimodal Corridor Study

Study Update Presented at the Nashville Public Meeting

East Park Community Center

April 18, 2013



Presentation Outline



- Interstate 24: A Strategic Corridor



- Study Approach and Schedule

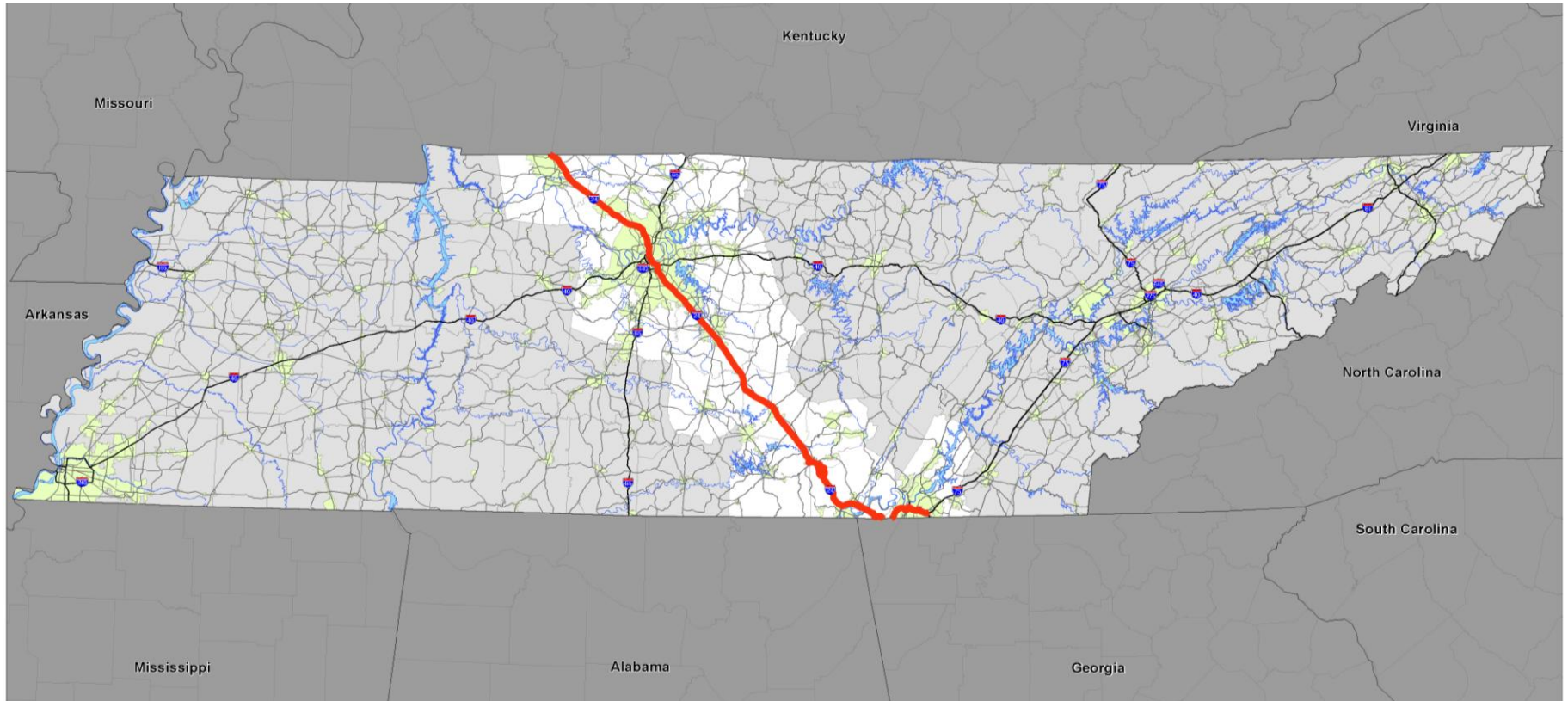


- Current Conditions along I-24

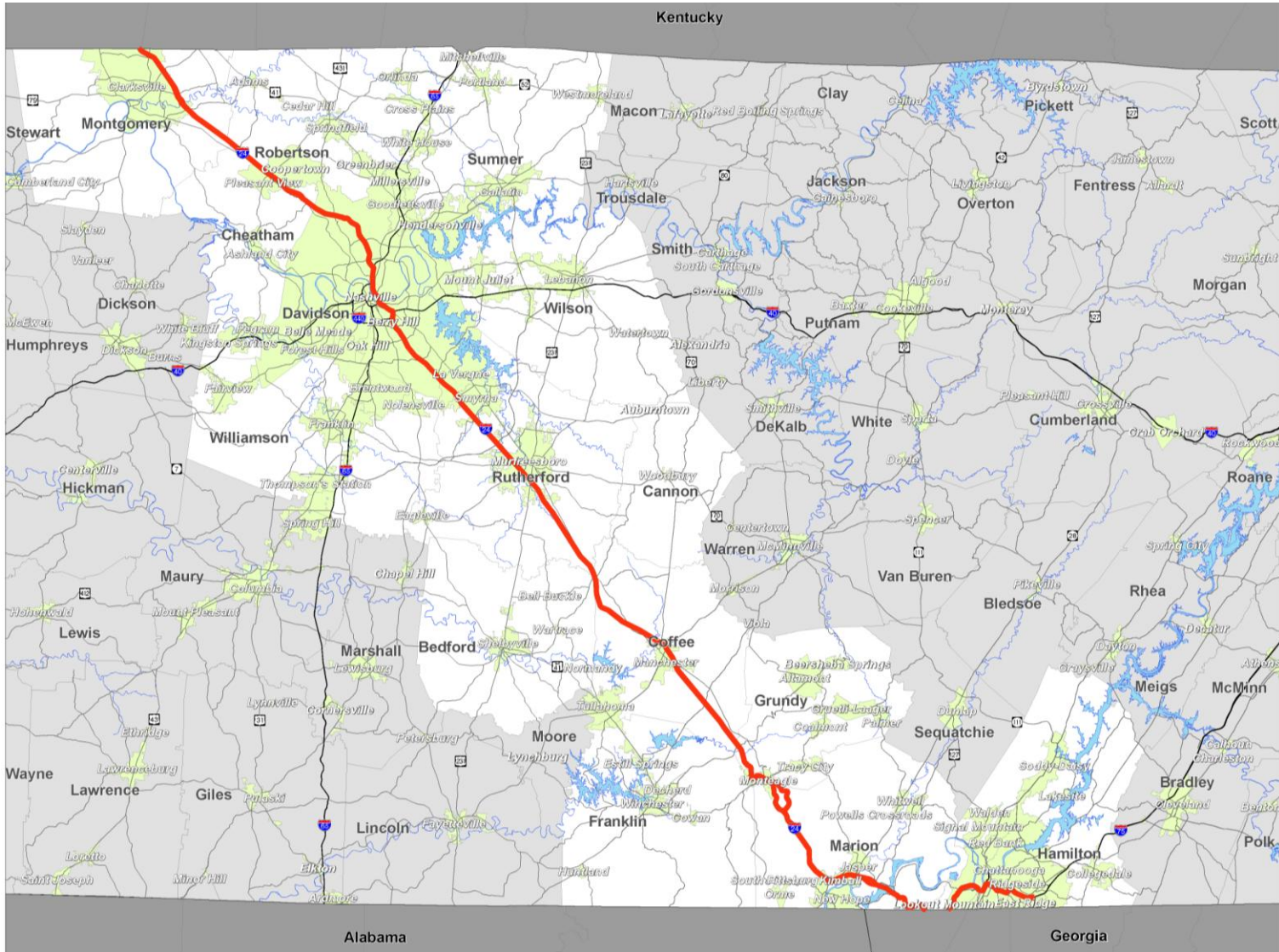


- Website and Comment Form

Interstate 24: A Strategic Corridor

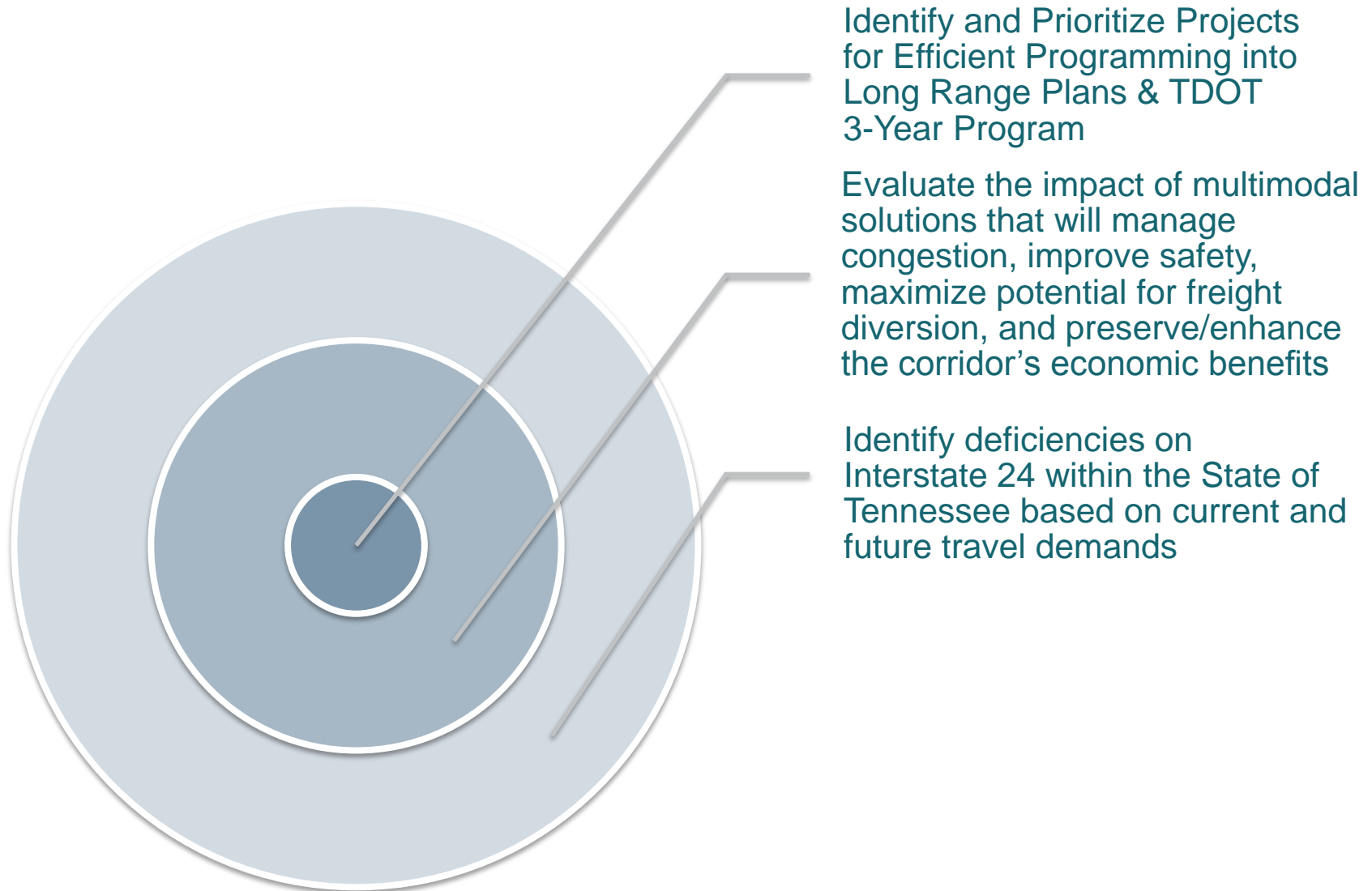


I-24 Corridor Map

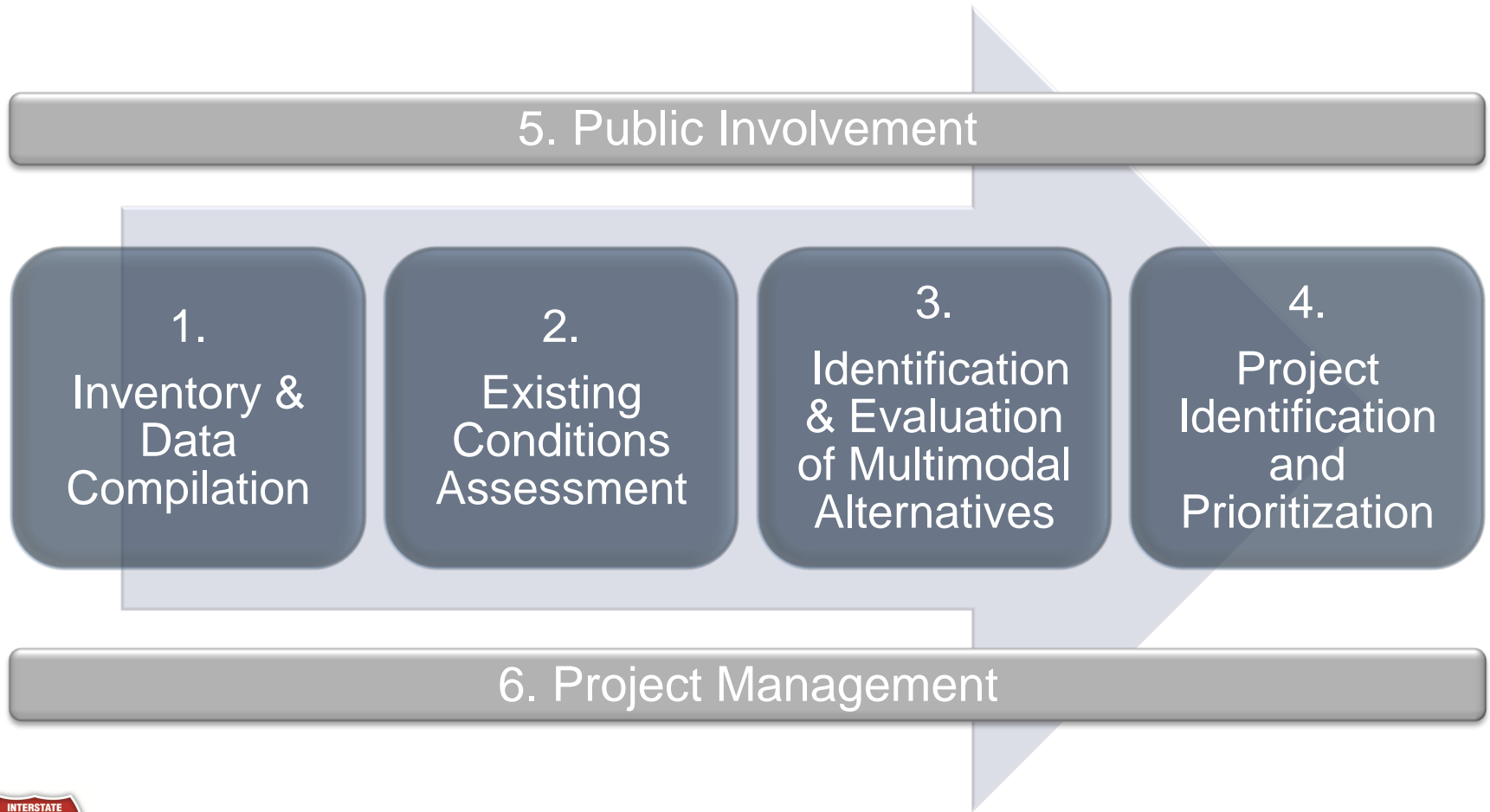


Study Update

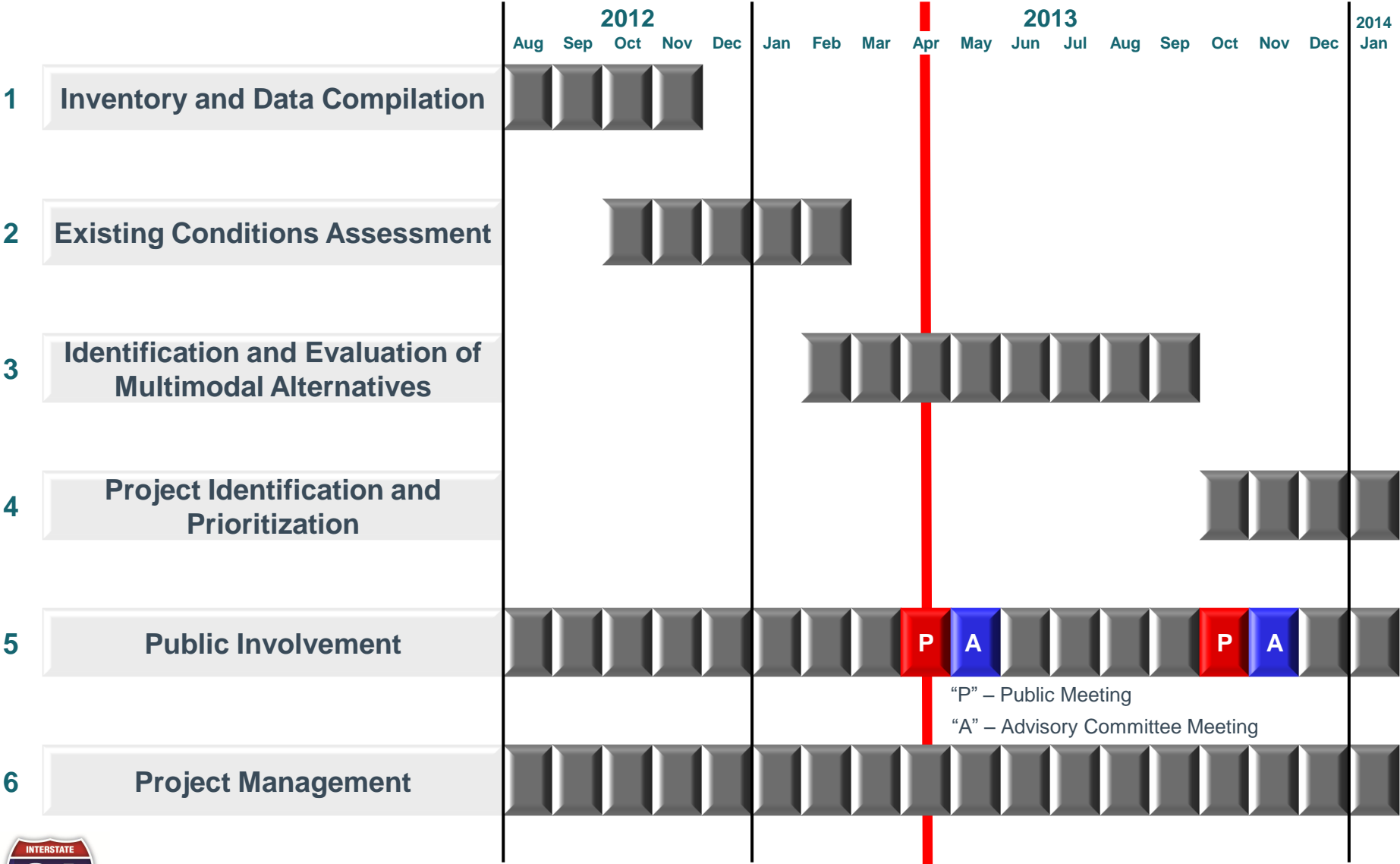
Study Purpose



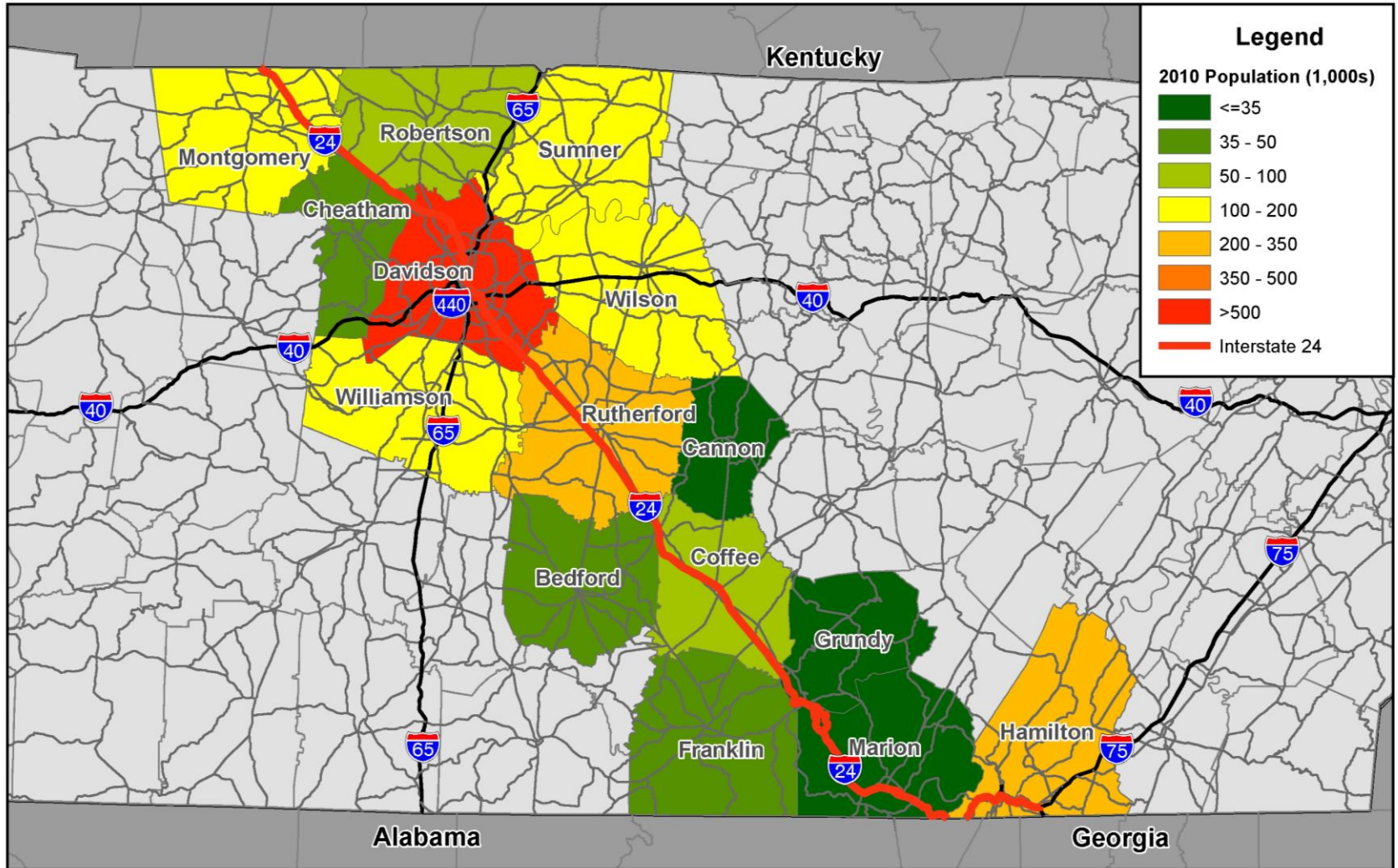
Study Approach



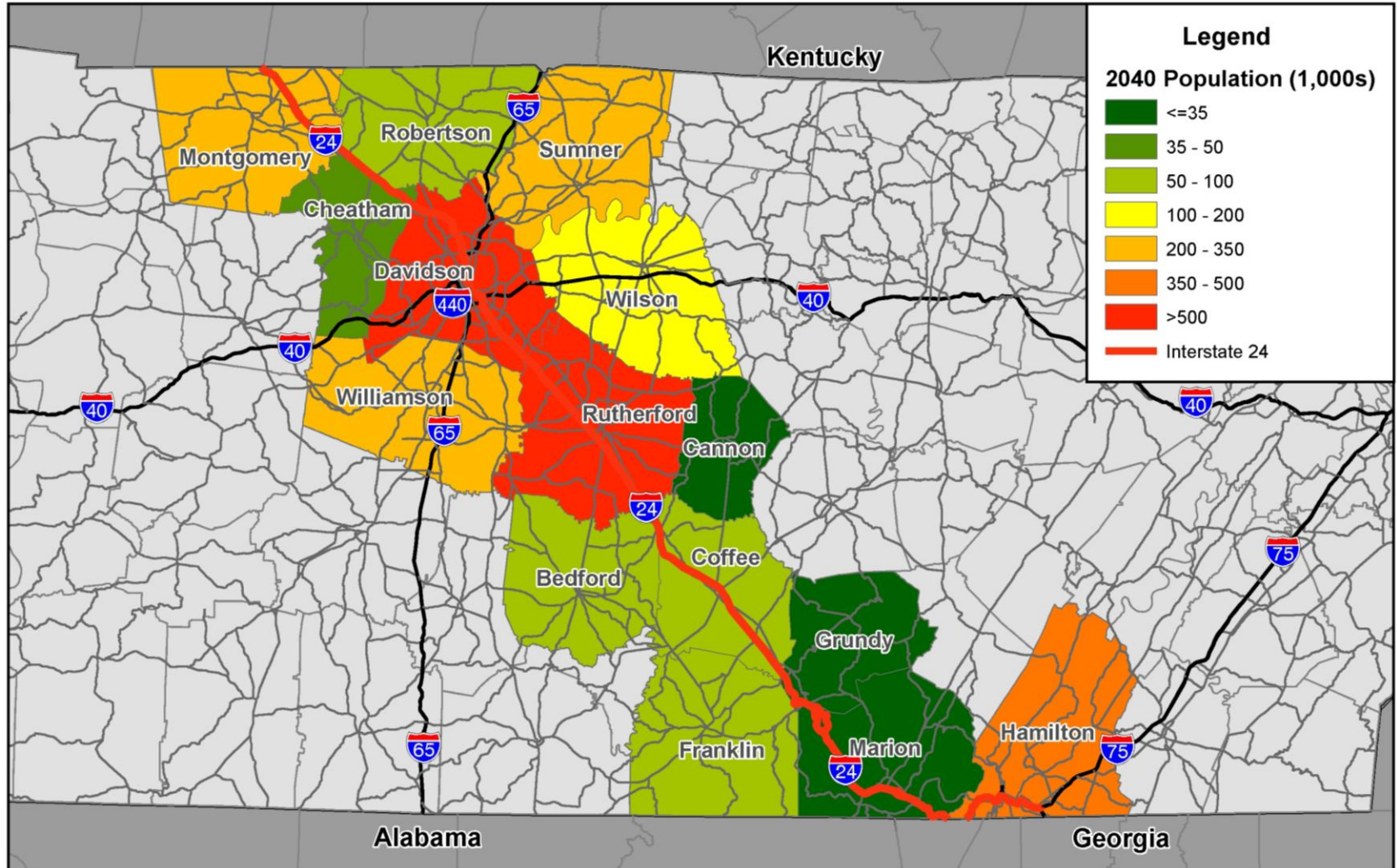
Schedule



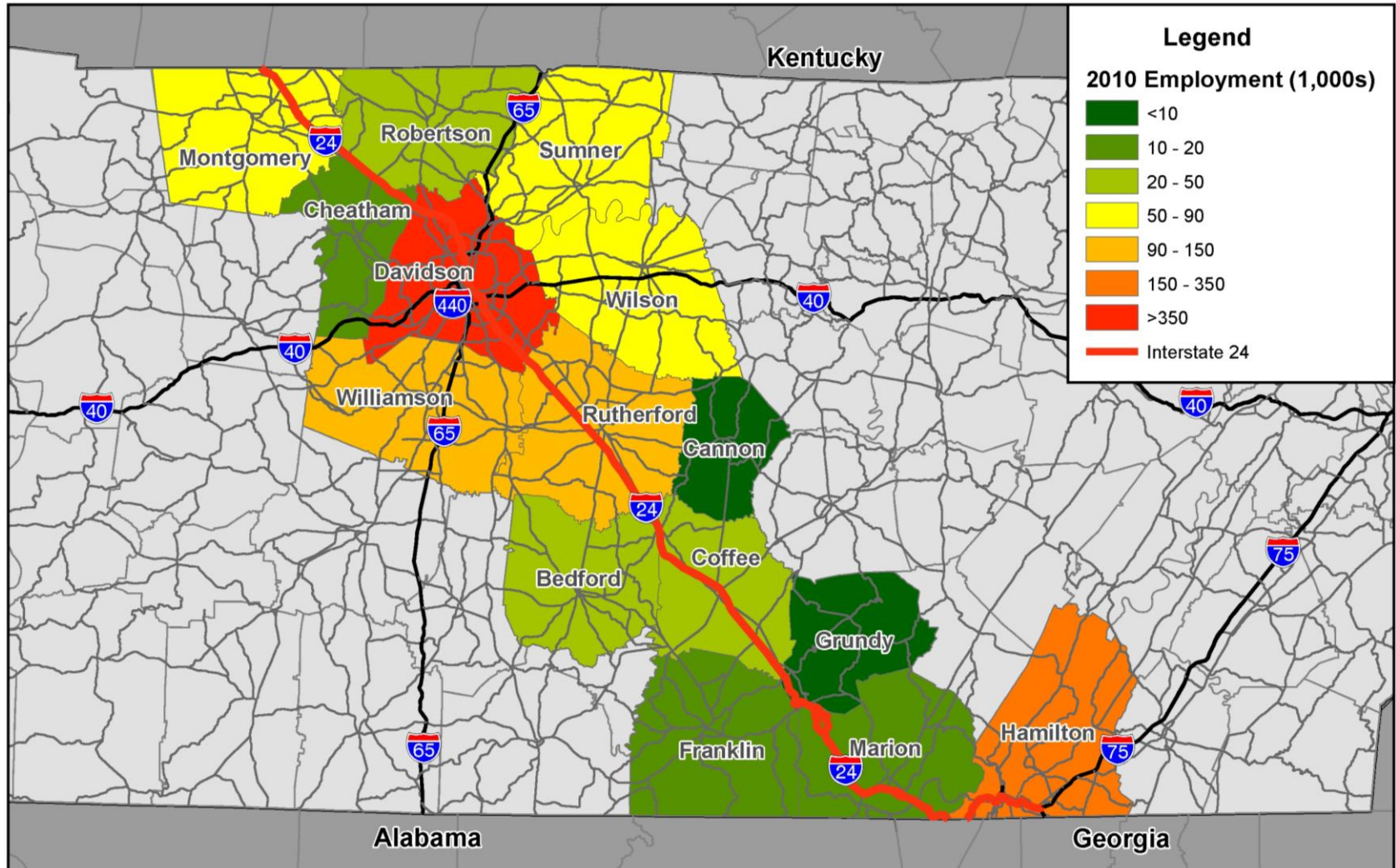
2010 Population by County



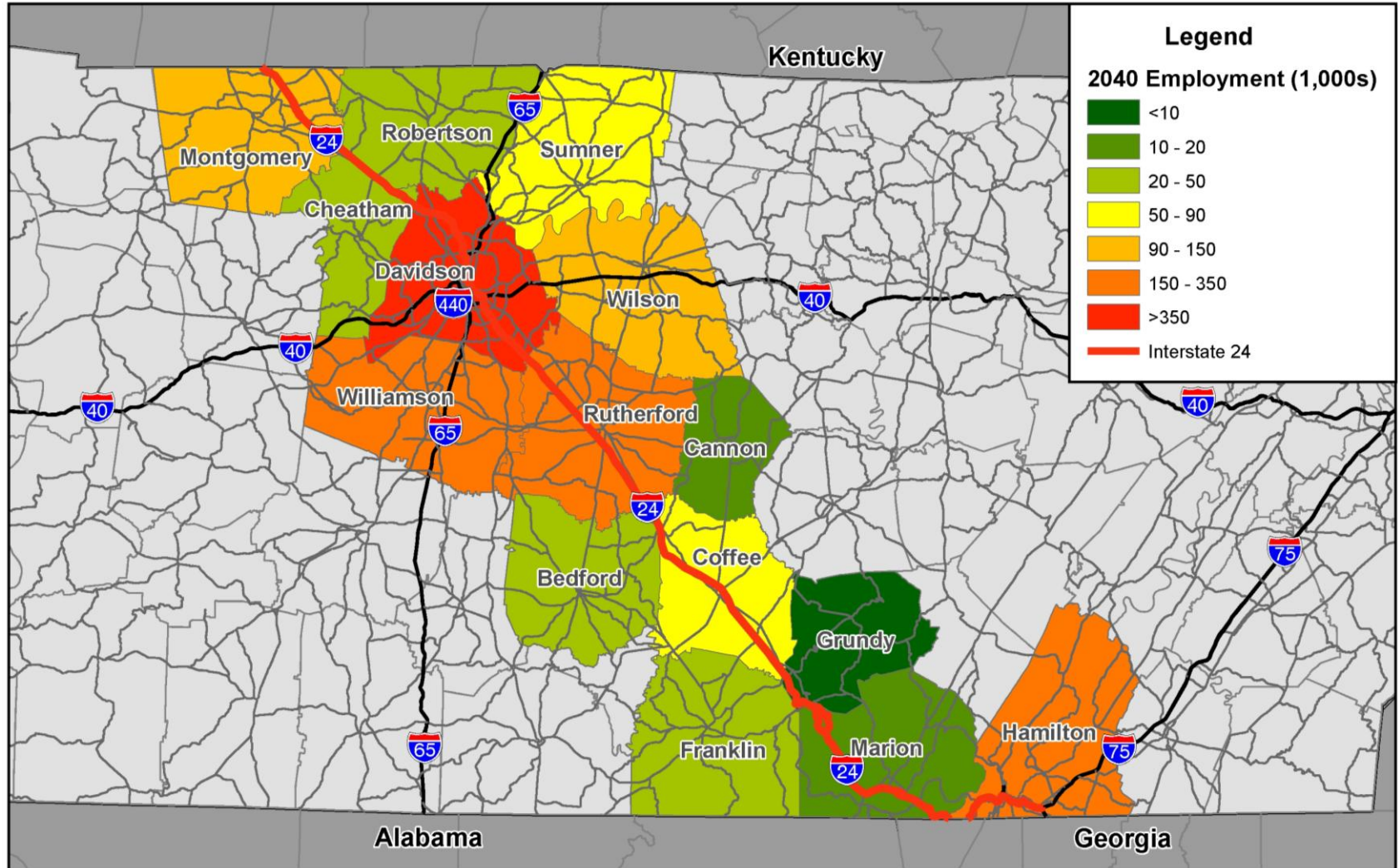
2040 Population by County



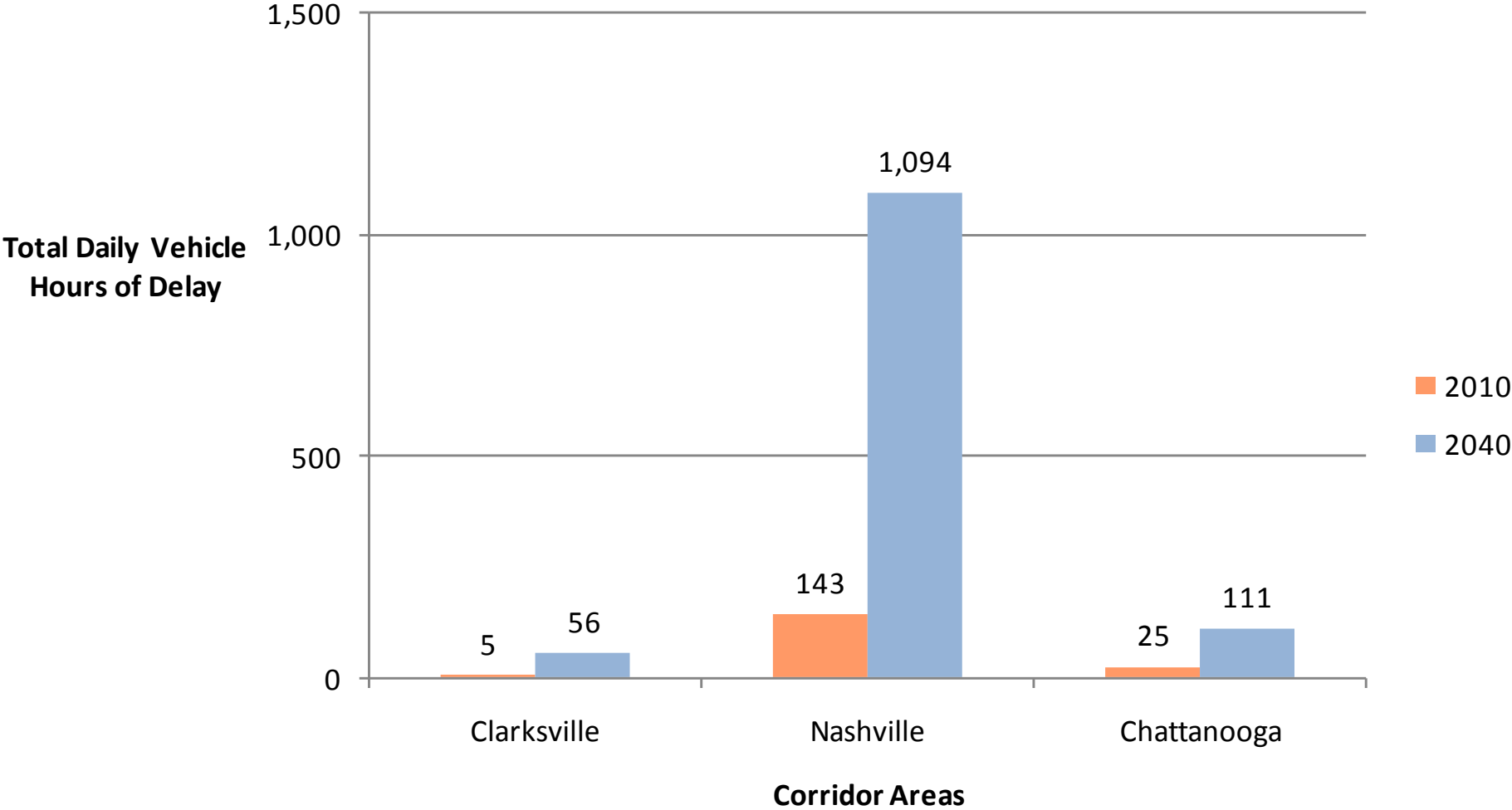
2010 Employment by County



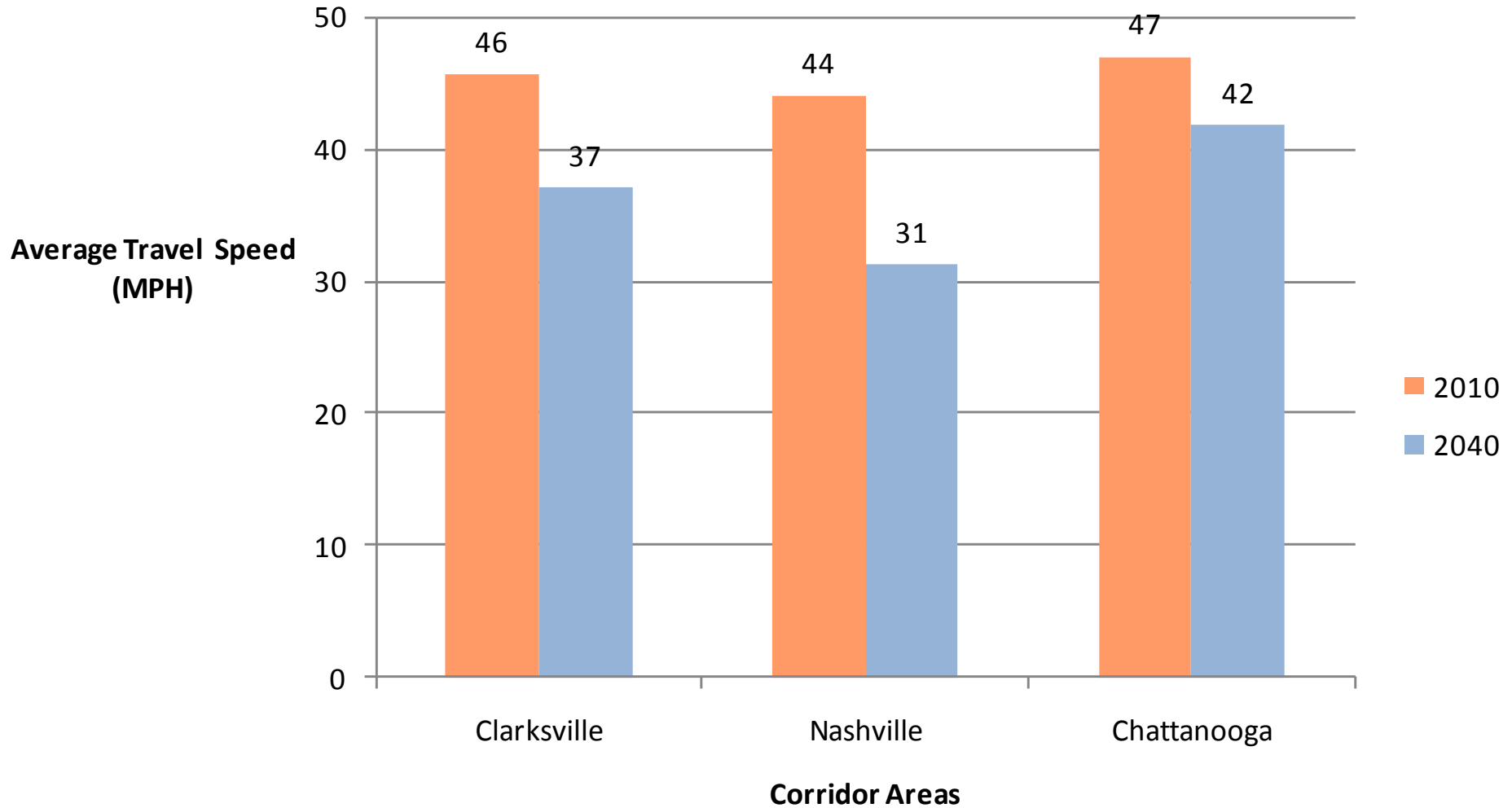
2040 Employment by County



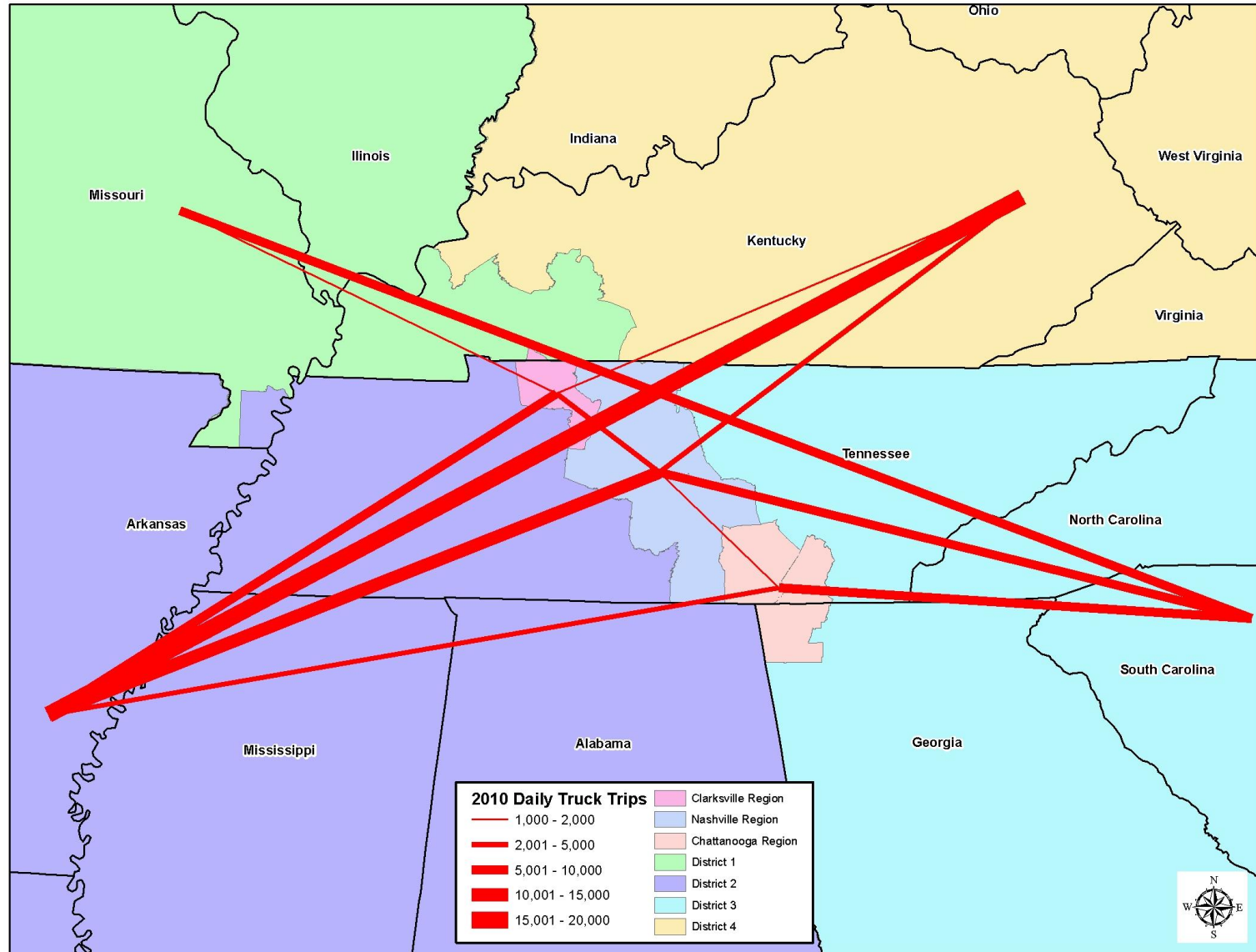
Delay in the I-24 Study Area



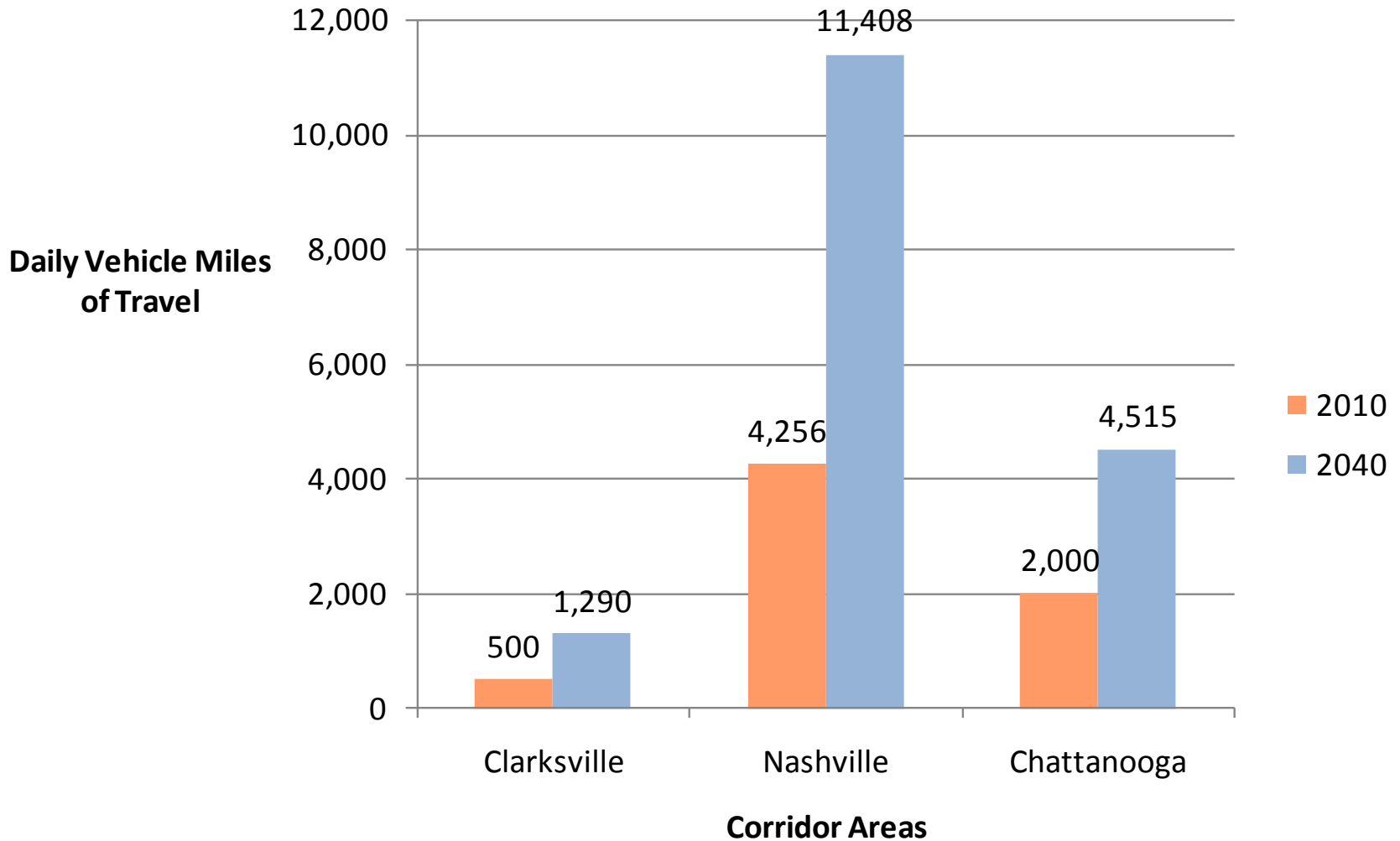
Average Speed in I-24 Study Area



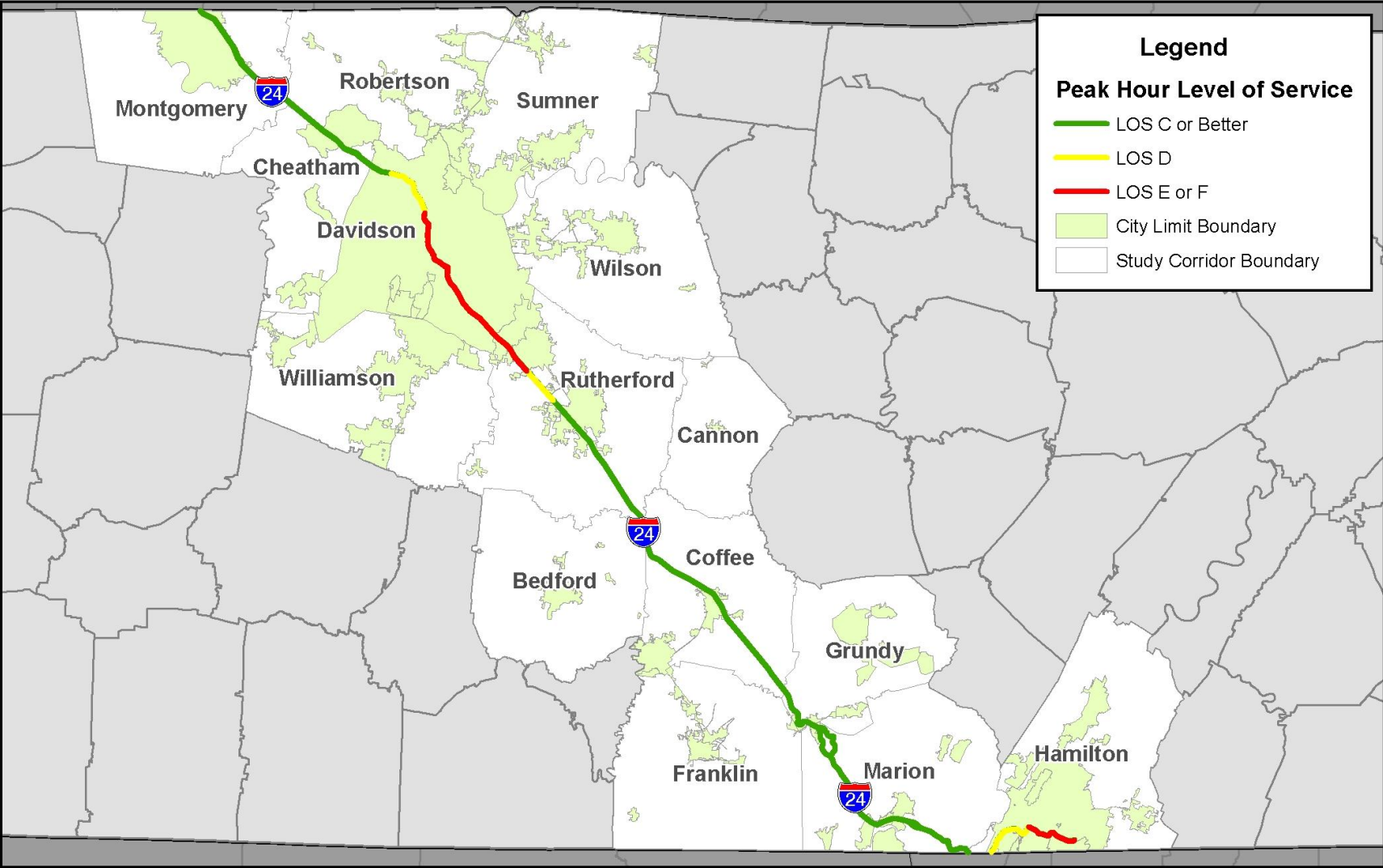
Truck Trips in I-24 Study Area



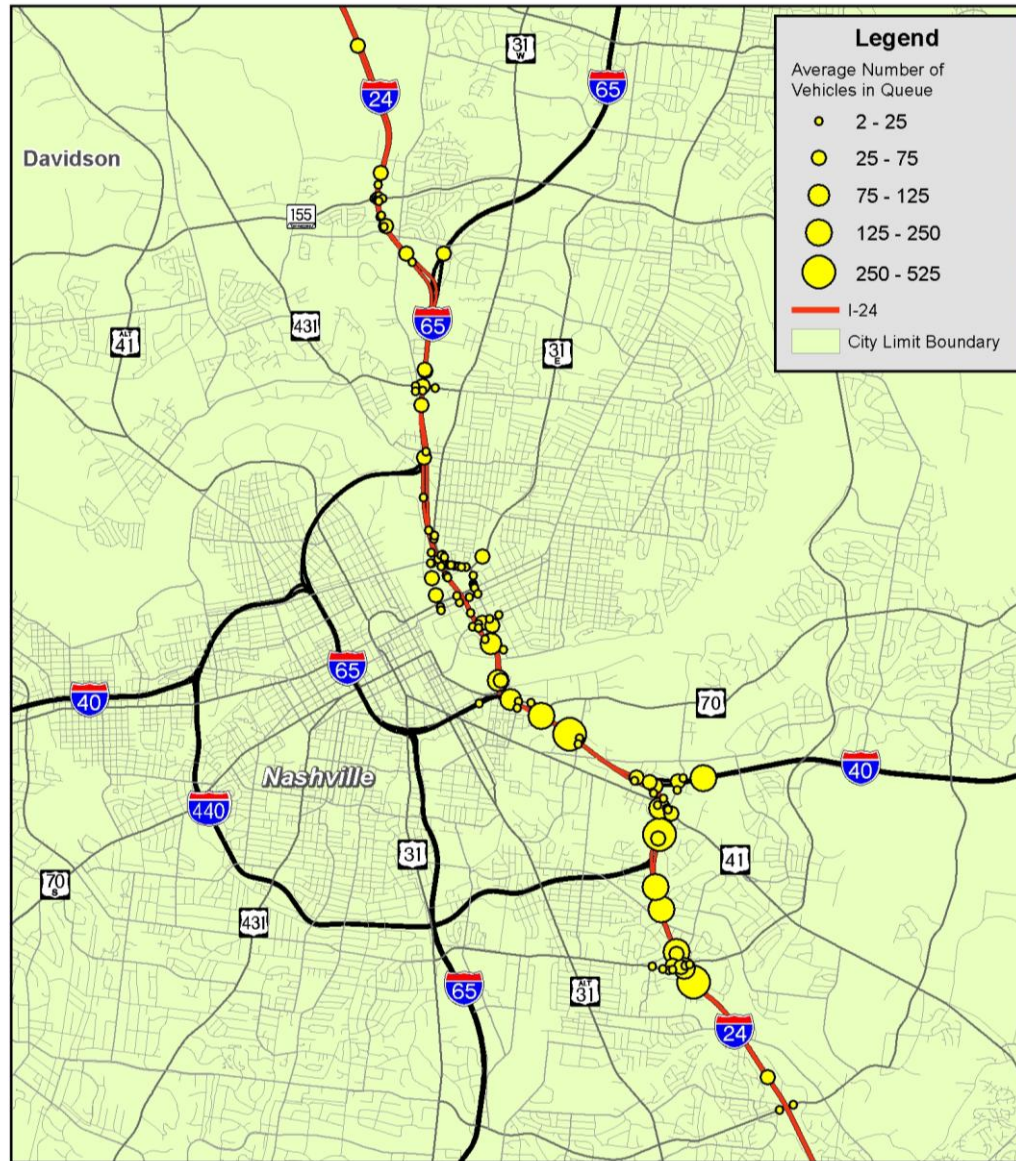
Truck Travel in I-24 Study Area



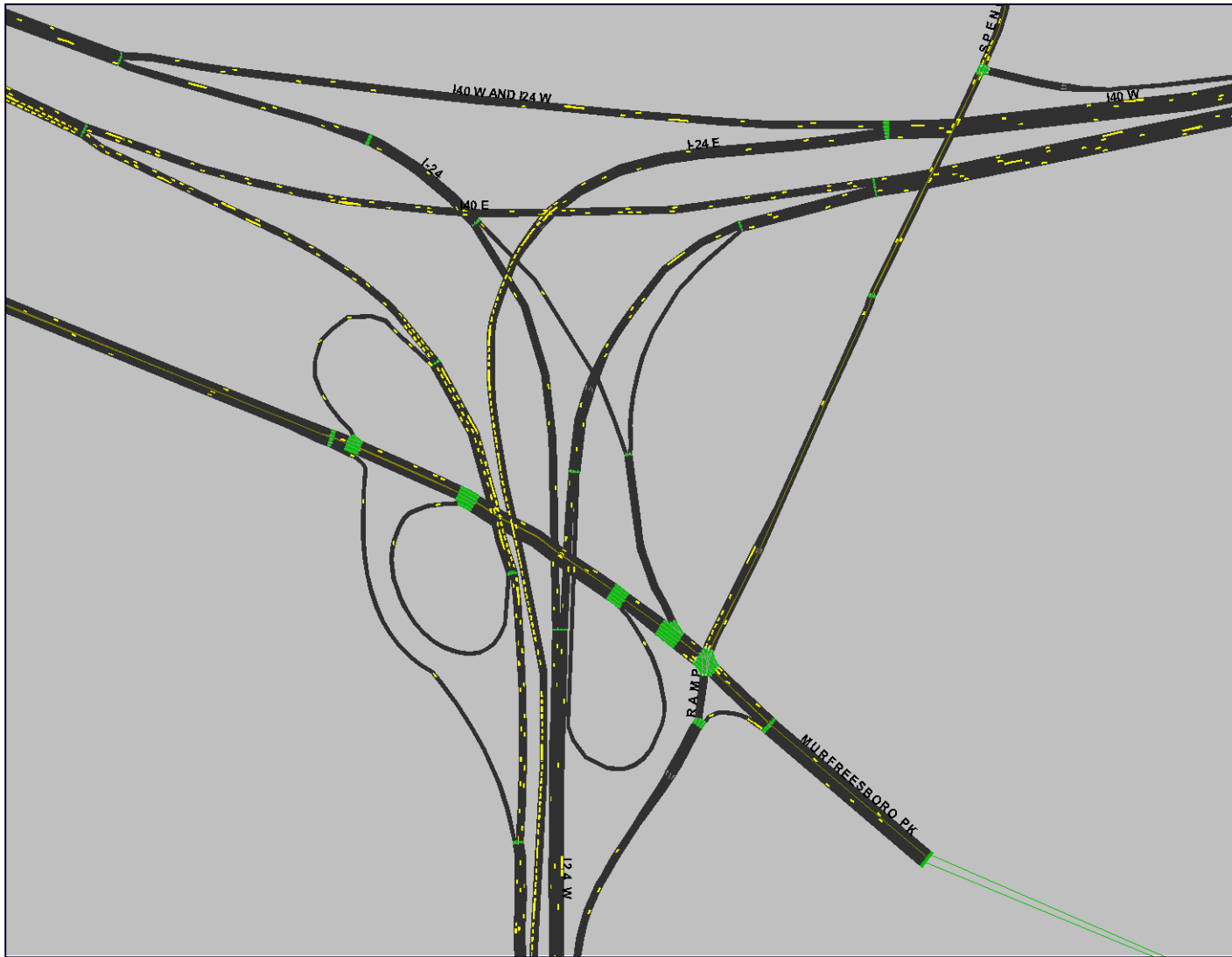
Peak Hour Congestion Along I-24



Peak Hour Queuing of Vehicles Along I-24



Animation of Traffic Along I-24

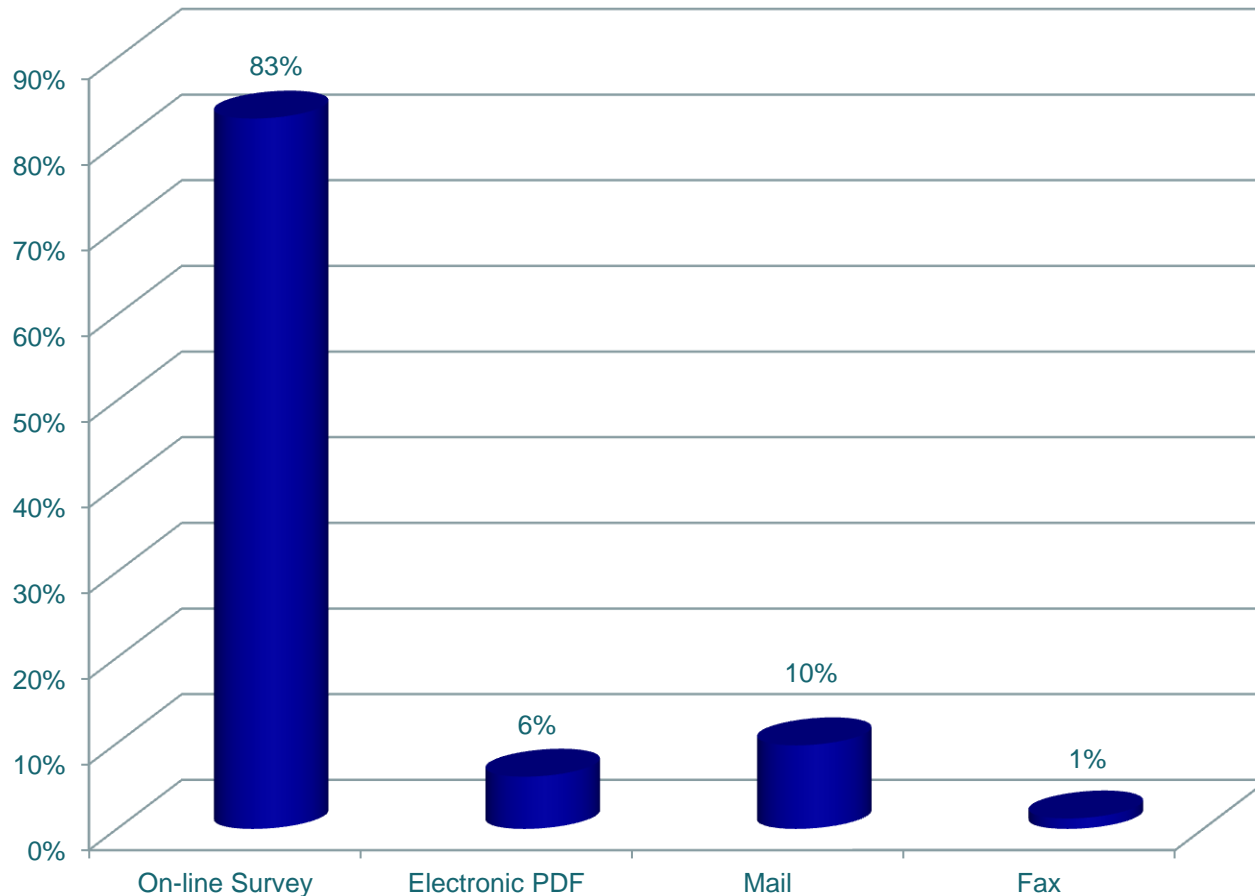


Website and Comment Form

- <http://www.tdot.state.tn.us/i24/>
 - Documents
 - Public Meeting Dates and Locations
 - Comment Form
- **Fill out Comment Form Online
or at Public Meeting**

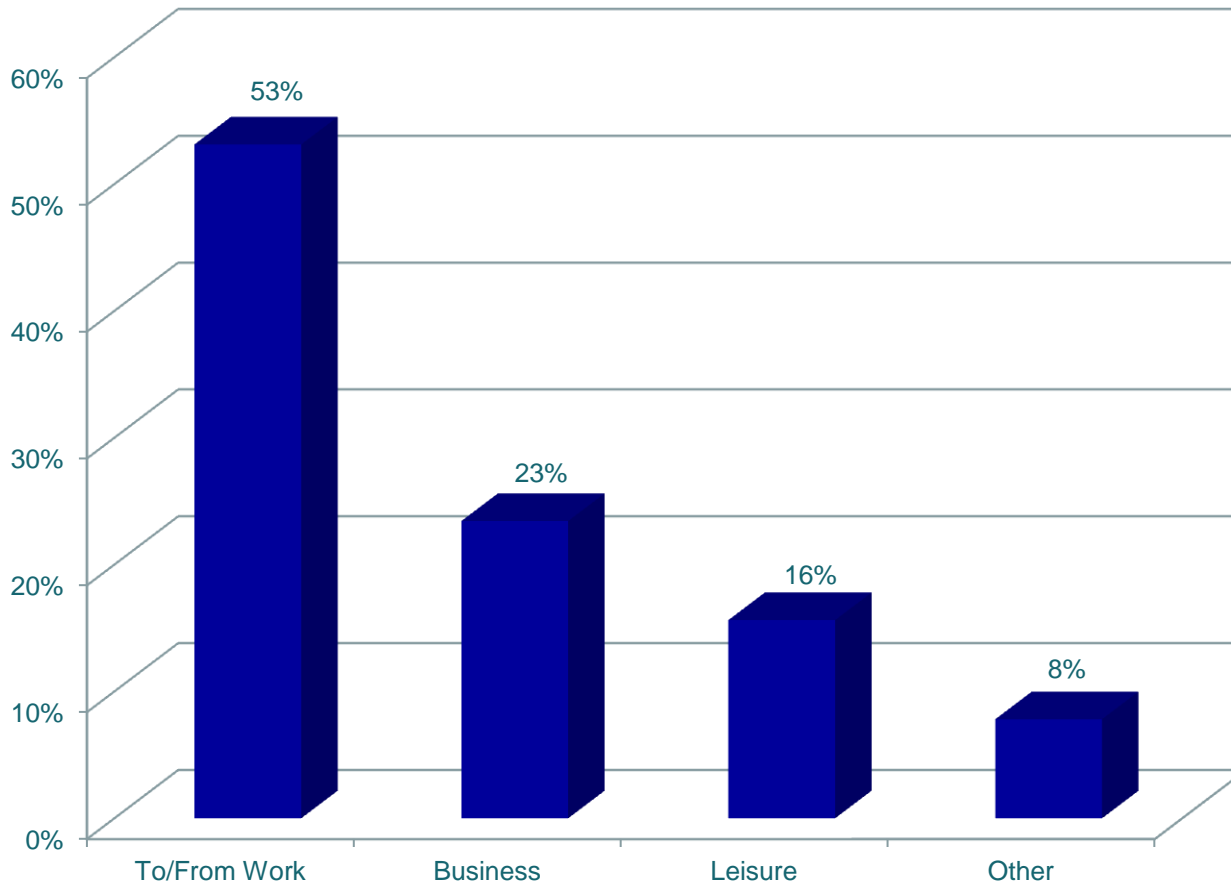
Comment Form Overview through April 15th

Q: How were the comment forms submitted?



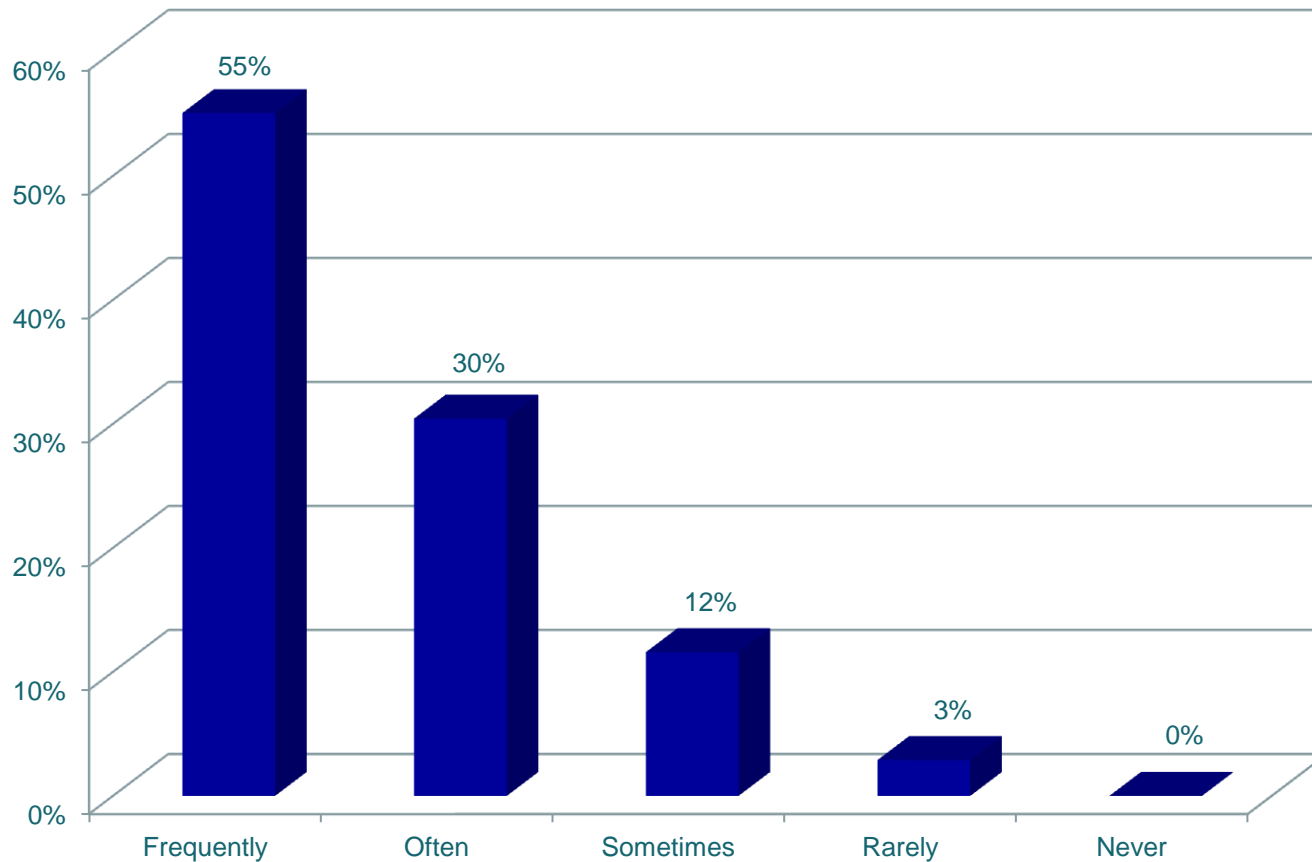
Comment Form Overview through April 15th

Q: Why do you use I-24?



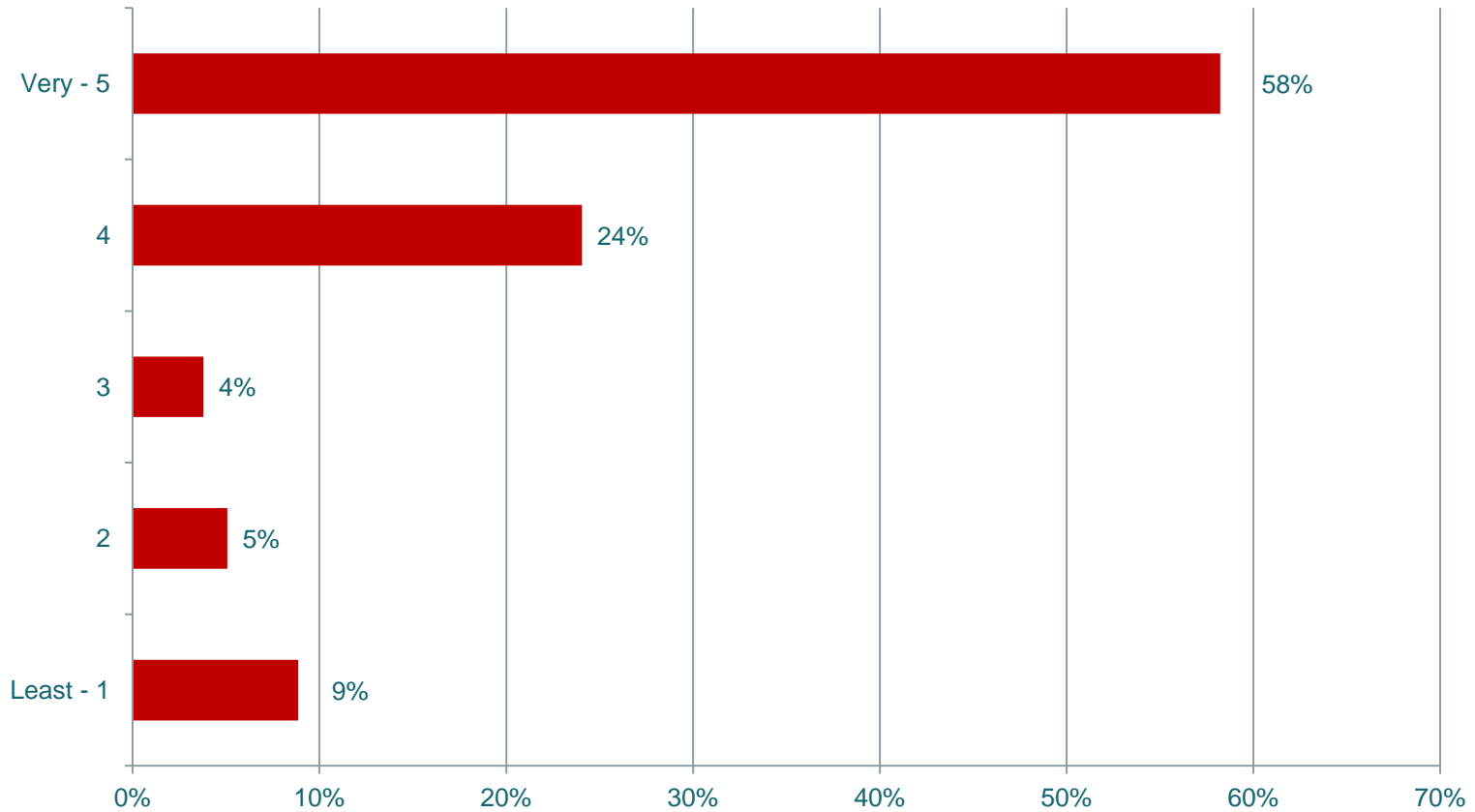
Comment Form Overview through April 15th

Q: How often do you use I-24?



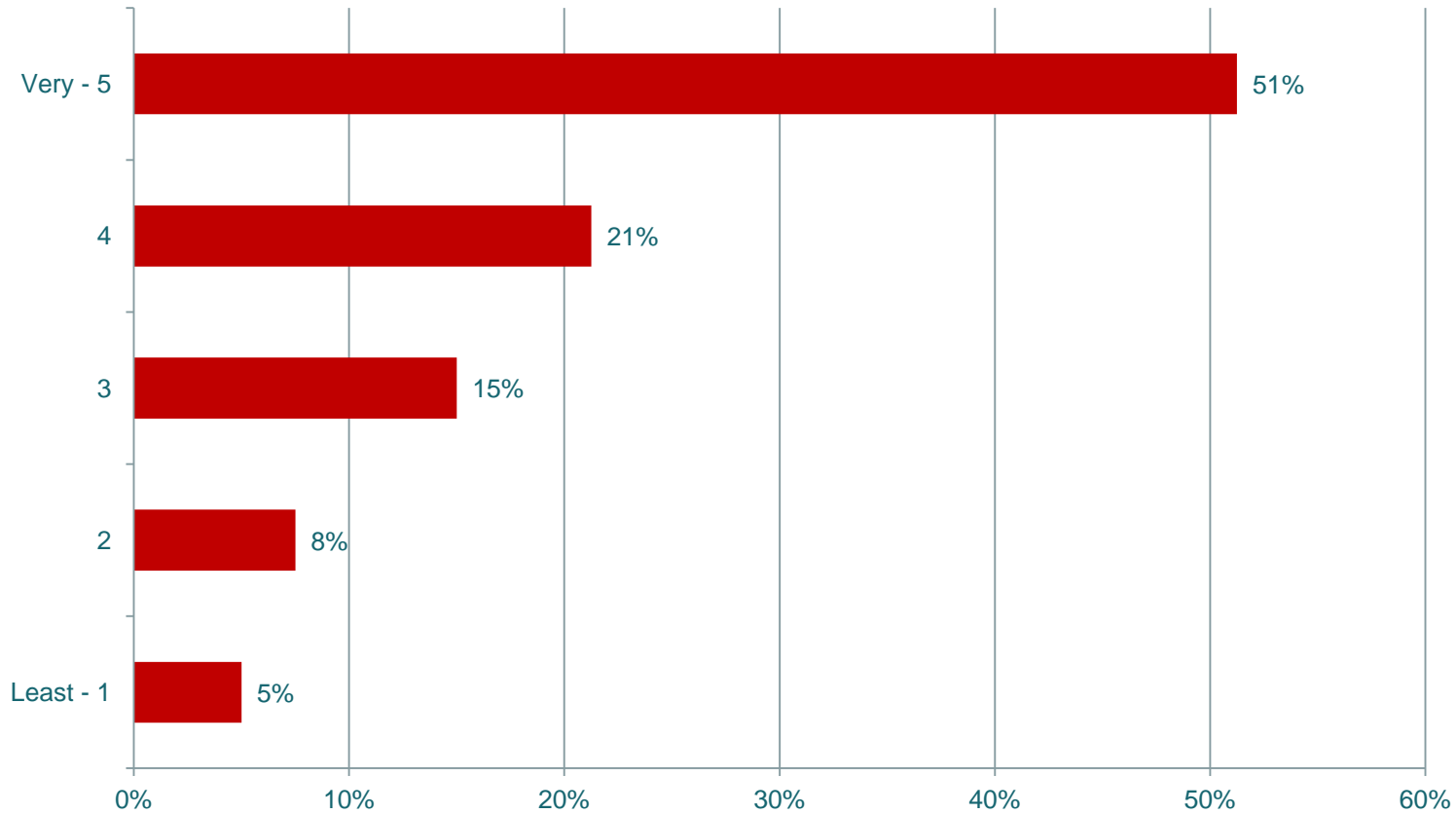
Comment Form Overview through April 15th

Q: What is the importance of less congestion to you?



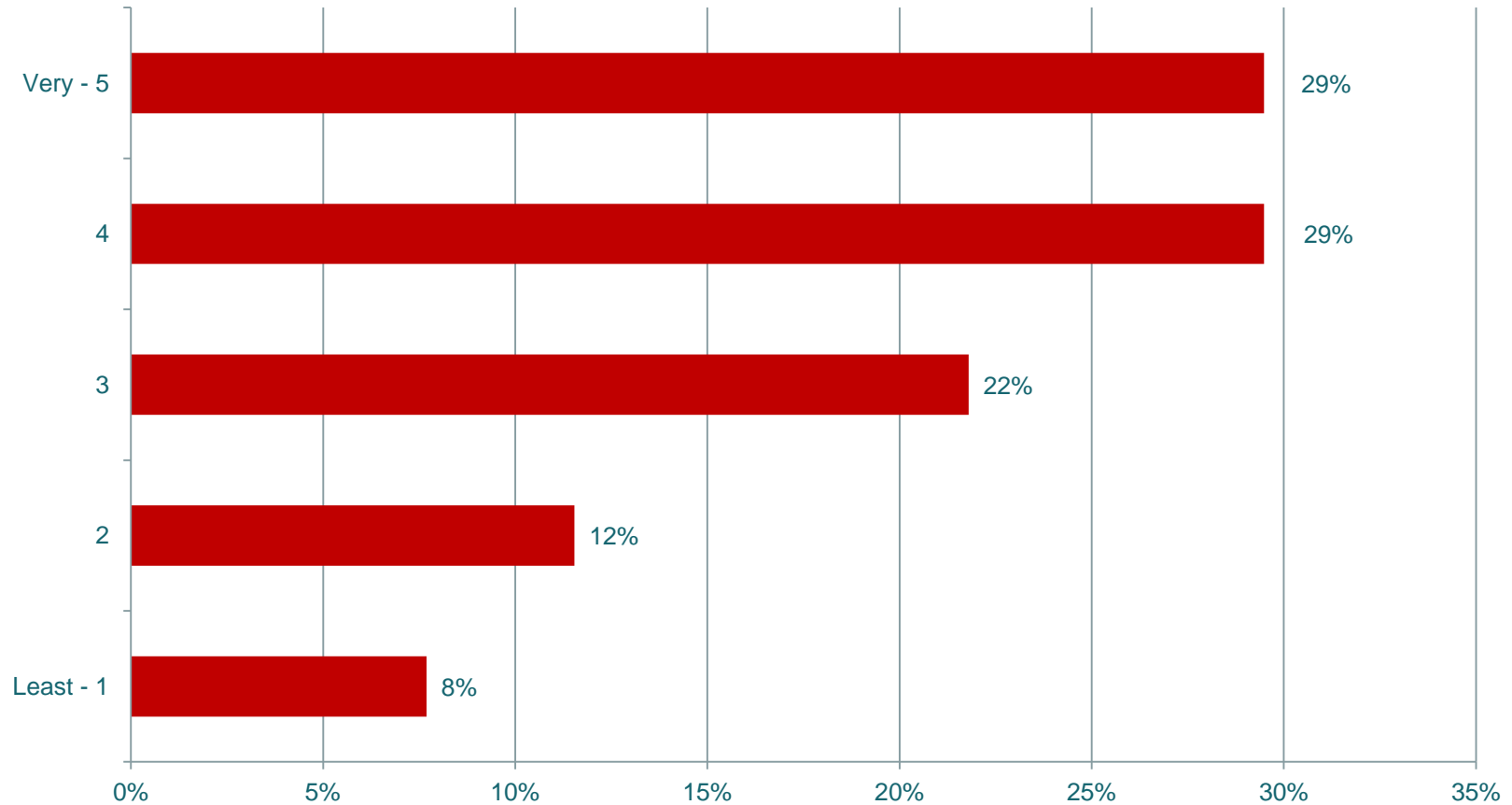
Comment Form Overview through April 15th

Q: What is the importance of safer travel to you?



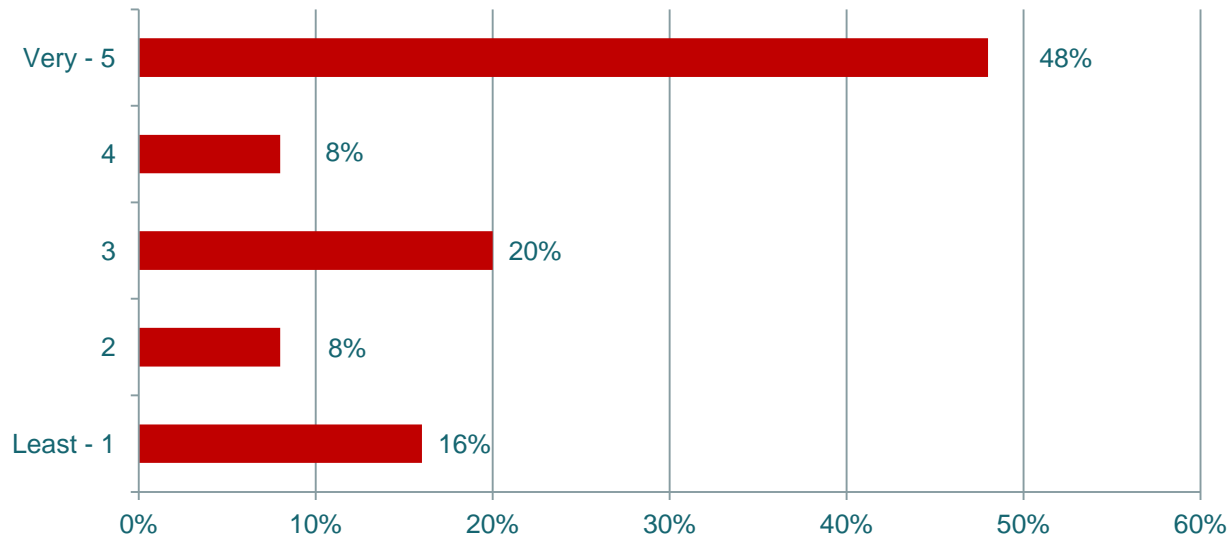
Comment Form Overview through April 15th

Q: What is the importance of better/more efficient interchanges to you?



Comment Form Overview through April 15th

Q: What is the importance of other issues to you?



- Lack of enforcement of existing laws
- Not enough commuter rail and bus options
- Not enough exits
- HOV lanes don't work
- Speed of trucks too high
- Poor “wayfinding” and lane markings

Comment Form Overview through April 15th

Q: What ideas do you have that could improve/correct your I-24 Corridor problems/concerns?

1. Additional lanes 29%
2. Public transit alternatives 27%
3. Longer merge lanes / on-ramps 10%
4. Remove / open HOV lanes 10%
5. More state troopers / improved enforcement 8%
6. Additional exits 8%
7. Widen lanes 6%
8. Expand freight alternatives 2%
9. Alternative routes 2%

Questions

Interstate 24 Multimodal Corridor Study

